

PETERS CONCRETE CO.

GREEN BAY, MARINETTE, BONDUEL & FOX CITIES

920 – 494 – 3700

**Crushing and Aggregate; Excavation - Heavy and Highway; Sewer and Water &
Ready-Mix Concrete**

2026

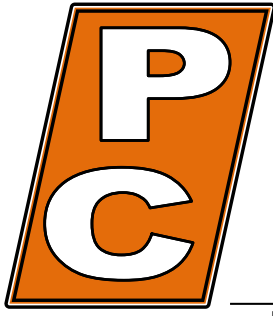
Material Prices

Prices Effective

February 1, 2026

www.petersconcrete.com

An Equal Opportunity Employer



PETERS CONCRETE COMPANY

Green Bay, Marinette, Bonduel & Fox Cities

Main Office 1516 Atkinson Dr. Green Bay, WI 920-494-3700

www.petersconcrete.com

Ready Mixed Concrete · Excavation · Heavy & Highway · Sewer & Water · Crushing & Aggregates

February 1, 2026

To: Peters Concrete Company Customers

Re: 2026 Material Prices

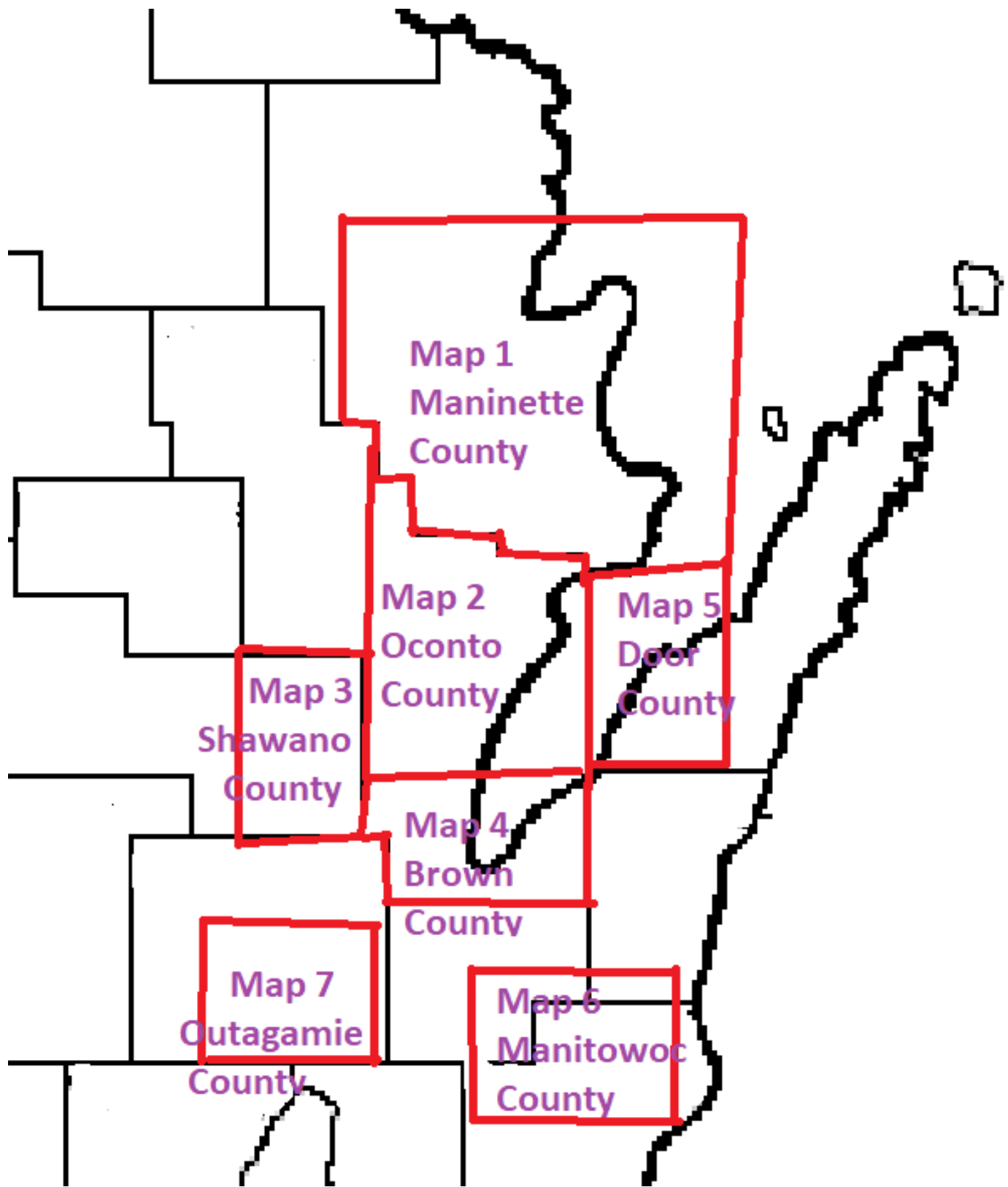
Dear Customers:

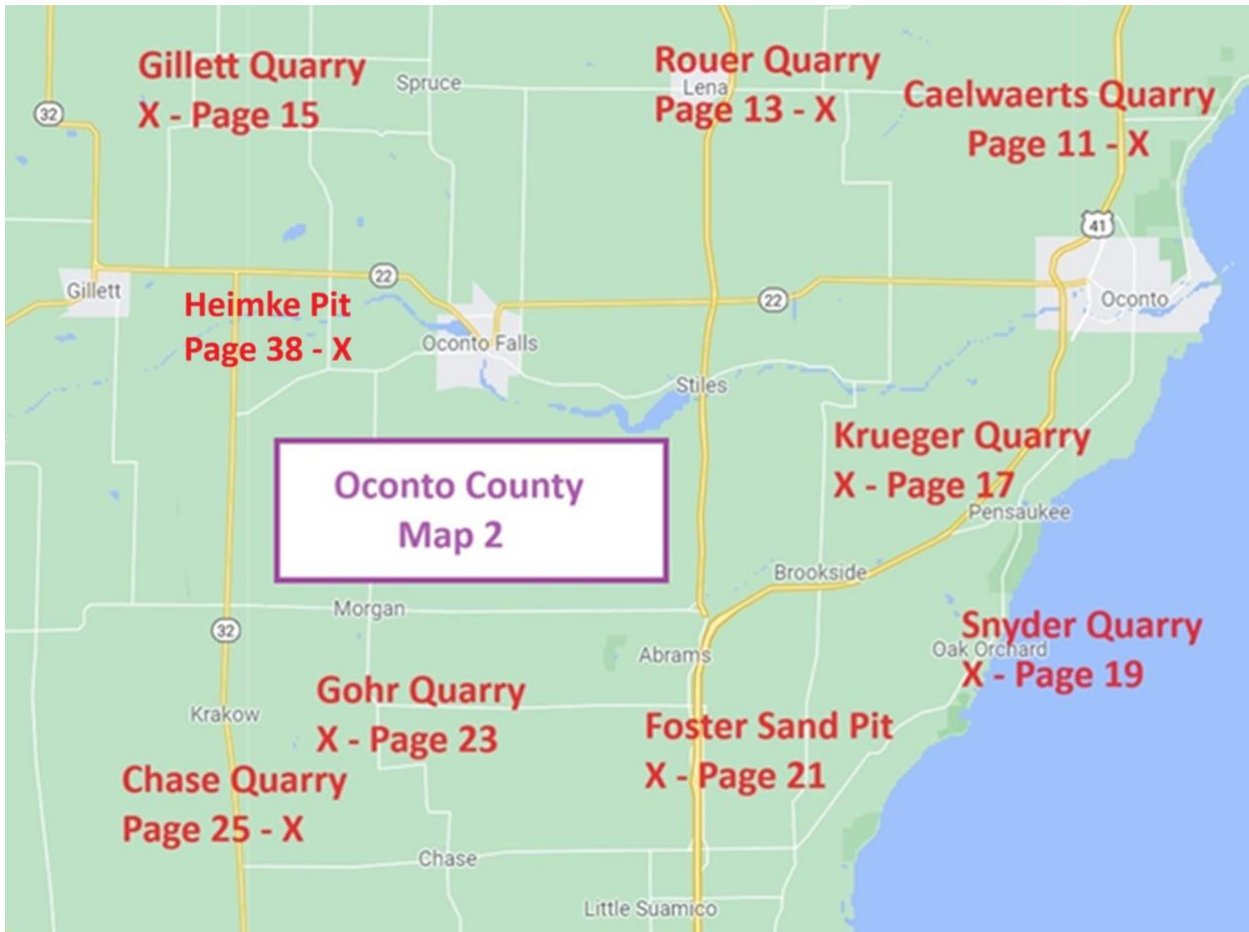
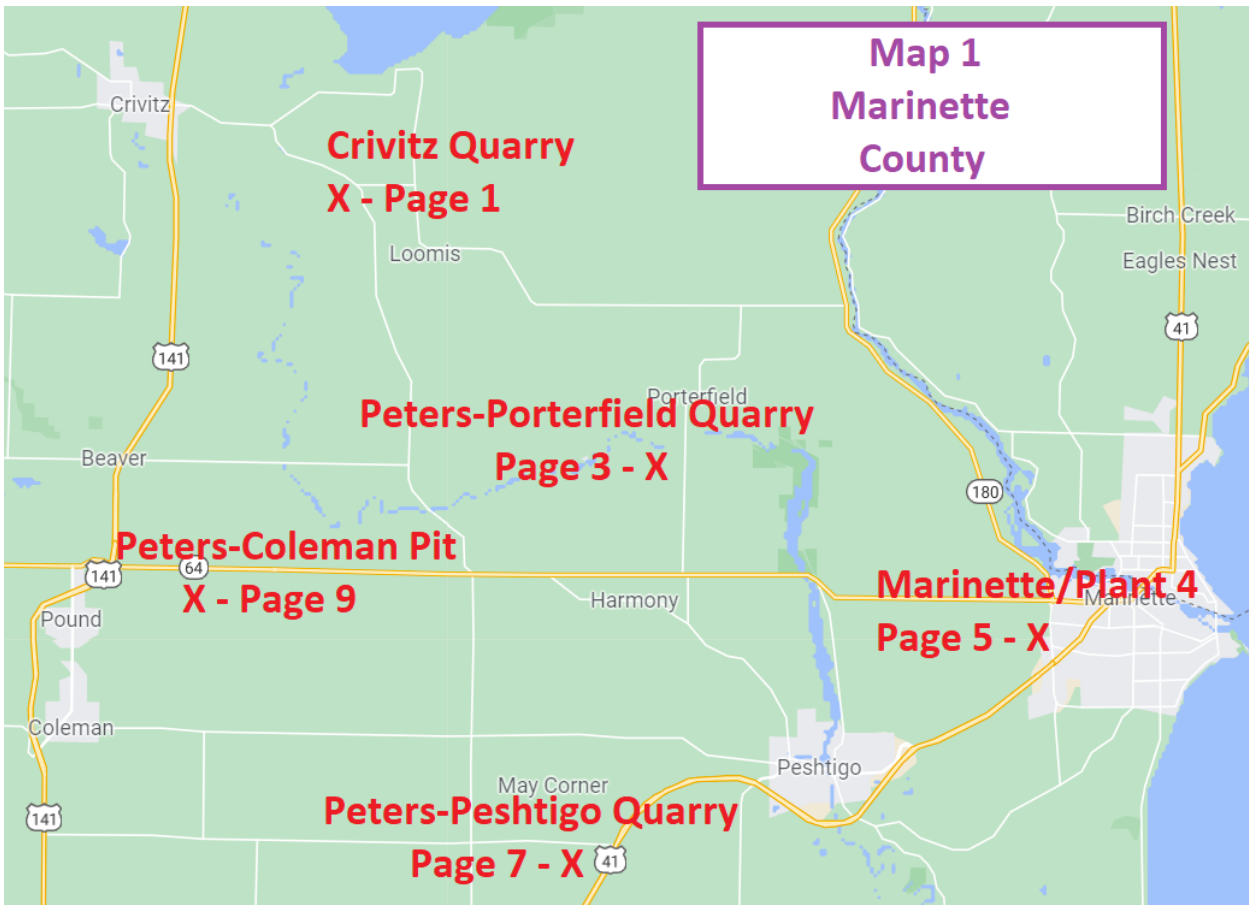
Peters Concrete Company is pleased to provide the enclosed price list for the 2026 construction season. The listed prices will be effective February 1, 2026. Included are maps showing locations of our quarries and pits and a list of additional sites and their locations that Peters Concrete Company sells materials out of. If pricing is not shown for a location that you are interested in, please call and we will be happy to provide a quote from the closest quarry or pit.

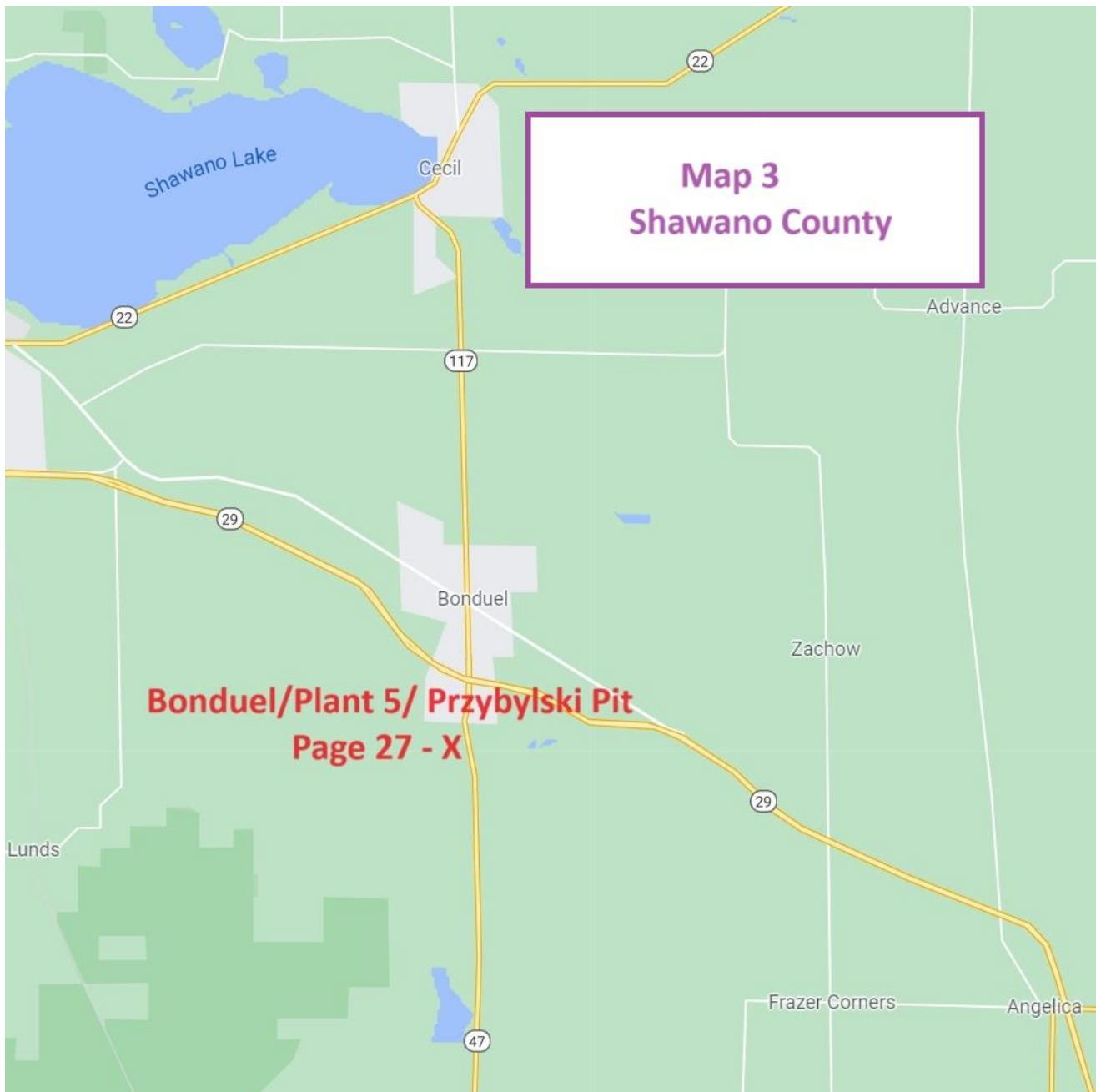
If you need a quote on material, need a large amount of material or further information, please call 920-494-3700.

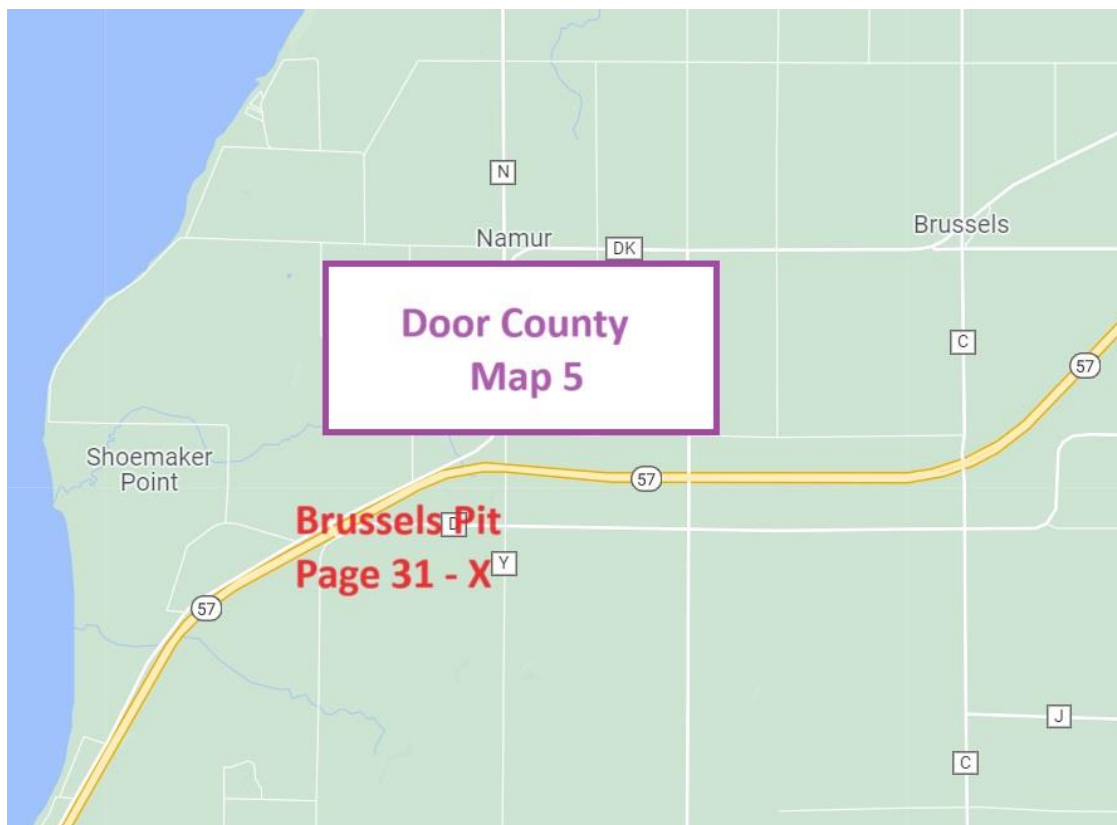
Have a great 2026 construction season.

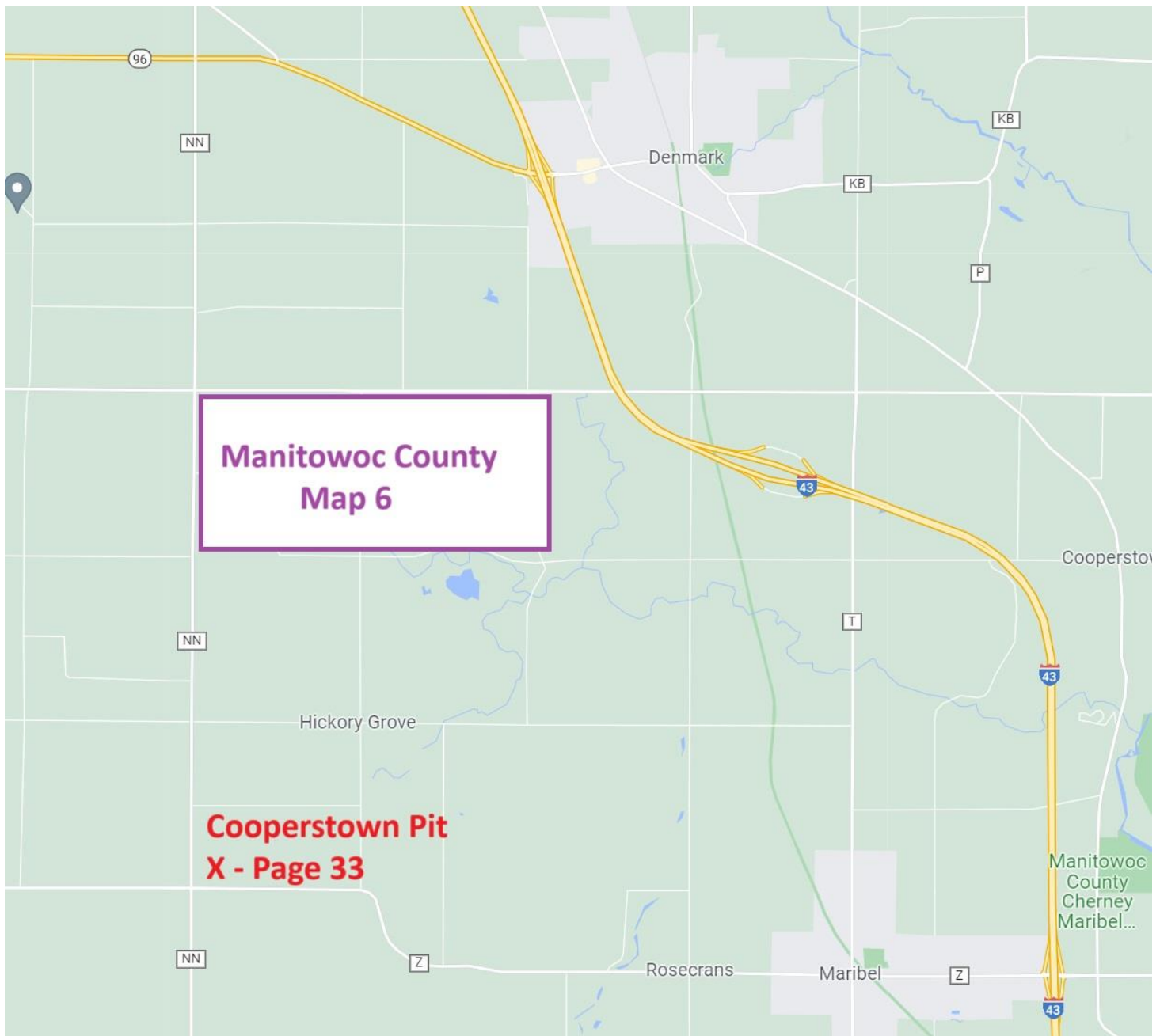
Sincerely,
Peters Concrete Company



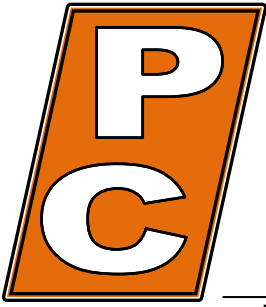












PETERS CONCRETE COMPANY

Green Bay, Marinette, Bonduel & Fox Cities

Main Office 1516 Atkinson Dr. Green Bay, WI 920-494-3700

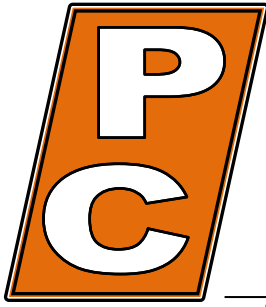
www.petersconcrete.com

Ready Mixed Concrete · Excavation · Heavy & Highway · Sewer & Water · Crushing & Aggregates

Page Index

	Site No.	Price Page	Map Page
Crivitz Quarry	26756	2	1
Porterfield Pit	26753	4	3
Marinette/Plant 4	26704	6	5
Peters-Peshtigo (Formerly Biundo) Quarry	26737	8	7
Peters-Coleman (Formerly Noll) Pit	26748	10	9
Caelwaerts Quarry	26750	12	11
Rouer Quarry	26733	14	13
Gillett Quarry	26730	16	15
Krueger Quarry	26706	18	17
Snyder Quarry	26734	20	19
Foster Sand Pit	26729	22	21
Gohr Quarry	26793	24	23
Chase Quarry	26705	26	25
Bonduel/Wash Plant 5/Przybylski Pit	26710	28	27
Wash Plant/Yard 8	26708	30	29
Green Bay/Plant 2	26702	30	29
Brussels Pit	26786	32	31
Cooperstown Pit	26785	34	33
Deer View Yard	26762	36	35
Heimke Pit	26738	38	37
Fischer Sand Pit	26740	40	39

List of Quarries/Pits



PETERS CONCRETE COMPANY

Green Bay, Marinette, Bonduel & Fox Cities

Main Office 1516 Atkinson Dr. Green Bay, WI 920-494-3700

www.petersconcrete.com

Ready Mixed Concrete · Excavation · Heavy & Highway · Sewer & Water · Crushing & Aggregates

Material List

<u>Code</u>	<u>Material</u>	<u>Unit</u>
802	Clay Fill	Yards
803	Sand Fill	Yards
804	Fill	Yards
808	Washed Sand	Tons
809	Pond Sand	Yards
810	Mason Sand	Tons
811	Screened Sand	Tons
817	Backfill	Yards
818	Backfill, Granular	Yards
819	Backfill, Structural	Yards
820	Backfill, MSE Wall	Yards
824	5/8" Screened (Stone Chips)	Tons
825	3/4" Screened Stone	Tons
826	1 1/2" Screened Stone	Tons
827	3" Screened	Tons
828	3" Crushed Stone	Tons
830	3/8" Stone/Crusher Dust	Tons
831	3/4" Crushed Stone	Tons
832	1 1/4" Crushed stone	Tons
833	Break Run	Tons
834	Pit Run	Tons
837	Rip Rap	Tons
838	Rip Rap - Light	Tons
839	Rip Rap - Medium	Tons
840	Rip Rap - Heavy/Large	Tons
841	Shot Stone	Tons
842	Flag Stone	Tons
843	3/4" Crushed Gravel	Tons
844	1 1/4" Crushed Gravel	Tons
845	Recycled Asphalt	Tons
846	1 1/4" Recycled Concrete	Tons
849	3/4" Mississippi River Stone	Tons
850	1 1/2" Mississippi River Stone	Tons
851	Big Round Stone	Tons
854	Topsoil	Yards
855	Pulverized Topsoil	Yards
867	Pea Stone	Tons

An Equal Opportunity Employer

868	3/4" Washed Stone	Tons
869	1 1/2" Washed Stone	Tons
880	Mulch - Red	Yards
882	Mulch - Natural Color	Yards

All Prices Are Per Ton (unless otherwise noted), FOB, and Do Not Include Tax.

All Prices Are Based on Full Load Quantities.

A Minimum charge of \$25.00 applies to all material loaded by Peters Concrete Co.

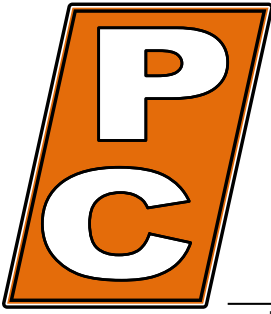
All Prices Are Subject to Change Without Notice.



X Peters Site

Crivitz Area

<u>Site</u>	Crivitz Quarry
<u>ID Number</u>	26756
<u>Address</u>	6985 County Road W
<u>Zip Code</u>	54114
<u>General Directions</u>	East on County Rd W from 141/Crivitz 3.4 miles



PETERS CONCRETE COMPANY

Green Bay, Marinette, Bonduel & Fox Cities

Main Office 1516 Atkinson Dr. Green Bay, WI 920-494-3700

www.petersconcrete.com

Ready Mixed Concrete · Excavation · Heavy & Highway · Sewer & Water · Crushing & Aggregates

Crivitz Area

Prices Effective February 1, 2026

Code	Material	Crivitz Quarry - 26756
825	3/4" Screened Stone	\$9.00
826	1 1/2" Screened Stone	\$9.00
828	3" Crushed Stone	\$7.50
830	Stone Dust	\$7.50
831	3/4" Crushed Stone	\$7.50
832	1 1/4" Crushed Stone	\$7.50
833	Breaker Run	\$7.00

All Prices Are Per Ton (unless otherwise noted), FOB, and Do Not Include Tax.

All Prices Are Based on Full Load Quantities.

A Minimum charge of \$25.00 applies to all material loaded by Peters Concrete Co.

All Prices Are Subject to Change Without Notice.



Porterfield Area

Site Peters Porterfield Quarry

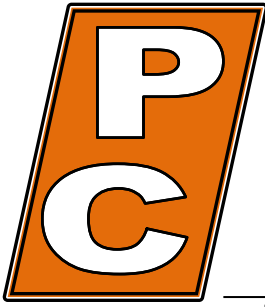
ID Number 26732

Address County Road E

Municipality Porterfield

County Marinette

General Directions North on County Road E from Highway 64, 2.4 Miles, West side of road



PETERS CONCRETE COMPANY

Green Bay, Marinette, Bonduel & Fox Cities

Main Office 1516 Atkinson Dr. Green Bay, WI 920-494-3700

www.petersconcrete.com

Ready Mixed Concrete · Excavation · Heavy & Highway · Sewer & Water · Crushing & Aggregates

Porterfield Area

Prices Effective February 1, 2026

Code	Material	Peters Porterfield Quarry -26732
802	Clay Fill	\$4.00 Yard
825	3/4" Screened Stone	\$10.00
826	1 1/2" Screened Stone	\$10.00
827	3" Screened	\$10.00
828	3" Crushed Stone	\$9.25
830	Stone Dust	\$9.25
831	3/4" Crushed Stone	\$9.25
832	1 1/4" Crushed Stone	\$9.25
833	Breaker Run	\$9.00
838	Light Rip Rap	\$20.00
839	Medium & Heavy Rip Rap	\$24.00
846	1 1/4" Recycled Concrete	\$7.50

All Prices Are Per Ton (unless otherwise noted), FOB, and Do Not Include Tax.

All Prices Are Based on Full Load Quantities.

A Minimum charge of \$25.00 applies to all material loaded by Peters Concrete Co.

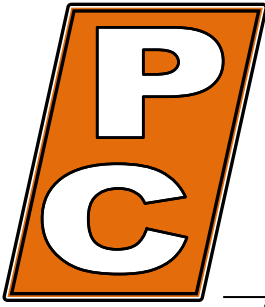
All Prices Are Subject to Change Without Notice.



X Peters Site

Marinette Area

<u>Site</u>	Marinette Plant
<u>ID Number</u>	26704
<u>Address</u>	W1604 Cleveland Ave
<u>Municipality</u>	Marinette
<u>Zip Code</u>	54143
<u>General Directions</u>	North on Roosevelt Road from 41; West on W. Cleveland Ave.



PETERS CONCRETE COMPANY

Green Bay, Marinette, Bonduel & Fox Cities

Main Office 1516 Atkinson Dr. Green Bay, WI 920-494-3700

www.petersconcrete.com

Ready Mixed Concrete · Excavation · Heavy & Highway · Sewer & Water · Crushing & Aggregates

Marinette Area

Prices Effective February 1, 2026

Code	Material	Marinette Plant/Plant 4 - 26704
803	Sand Fill	\$5.00 CY
808	Washed Sand	\$18.25
825	3/4" Screened Stone	\$14.00
826	1 1/2" Screened Stone	\$14.00
831	3/4" Crushed Stone	\$12.50
832	1 1/4" Recycled Concrete	\$12.50
846	1 1/4" Recycled Concrete	\$8.50
868	3/4" Washed Stone	\$15.25
869	1 1/2" Washed Stone	\$15.25
	Concrete Blocks/Barriers	Call for price

All Prices Are Per Ton (unless otherwise noted), FOB, and Do Not Include Tax.

All Prices Are Based on Full Load Quantities.

A Minimum charge of \$25.00 applies to all material loaded by Peters Concrete Co.

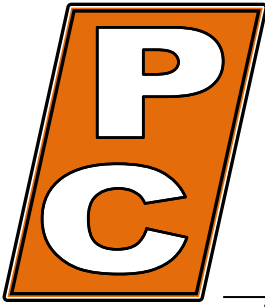
All Prices Are Subject to Change Without Notice.



X Peters Site

Peshtigo Area

Site	Peters Peshtigo Quarry (Formerly Buindo)
ID Number	26737
Address	Vernon Hills Drive
Municipality	Peshtigo
Zip Code	54157
General Directions	West on County Rd M from 41, South on Vernon Hills Drive



PETERS CONCRETE COMPANY

Green Bay, Marinette, Bonduel & Fox Cities

Main Office 1516 Atkinson Dr. Green Bay, WI 920-494-3700

www.petersconcrete.com

Ready Mixed Concrete · Excavation · Heavy & Highway · Sewer & Water · Crushing & Aggregates

Peshtigo Area

Prices Effective February 1, 2026

Code	Material	Peters Peshtigo Quarry - 26737
802	Clay Fill	\$3.00/Yard
825	3/4" Screened Stone	\$10.00
826	1 1/2" Screened Stone	\$10.00
827	3" Screened	\$10.00
828	3" Crushed Stone	\$9.25
830	Stone Dust	\$9.25
831	3/4" Crushed Stone	\$9.25
832	1 1/4" Crushed Stone	\$9.25
833	Breaker Run	\$9.00
838	Light Rip Rap	\$20.00
839	Medium Rip Rap	\$24.00
840	Heavy Rip Rap	\$24.00
854	Topsoil	\$12.00/Yard

All Prices Are Per Ton (unless otherwise noted), FOB, and Do Not Include Tax.

All Prices Are Based on Full Load Quantities.

A Minimum charge of \$25.00 applies to all material loaded by Peters Concrete Co.

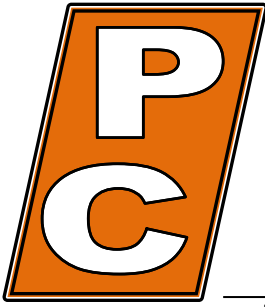
All Prices Are Subject to Change Without Notice.



X Peters Site

Coleman Area

Site	Peters Coleman Pit (Formerly Noll)
ID Number	26748
Address	3474 N. 9 th Road
Municipality	Coleman
Zip Code	54112
General Directions	East on E. Main/County Road "B" from 141; North on N. 9th Road



PETERS CONCRETE COMPANY

Green Bay, Marinette, Bonduel & Fox Cities

Main Office 1516 Atkinson Dr. Green Bay, WI 920-494-3700

www.petersconcrete.com

Ready Mixed Concrete · Excavation · Heavy & Highway · Sewer & Water · Crushing & Aggregates

Coleman Area

Prices Effective February 1, 2026

Code	Material	Peters Coleman Pit - 26748
803	Sand Fill	\$5.50/Yard
804	Pond Sand	\$3.00/Yard
808	Washed Sand	\$13.00
834	Pit Run	\$7.00
843	3/4" Crushed Gravel	\$8.00
844	1 ¼" Crushed Gravel	\$8.00
868	3/4" Washed Stone	\$10.00
869	1 ½" Washed Stone	\$10.00

All Prices Are Per Ton (unless otherwise noted), FOB, and Do Not Include Tax.

All Prices Are Based on Full Load Quantities.

A Minimum charge of \$25.00 applies to all material loaded by Peters Concrete Co.

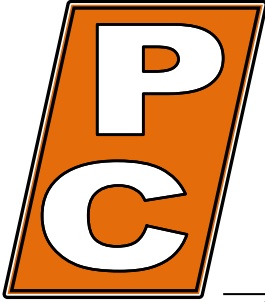
All Prices Are Subject to Change Without Notice.



X Peters Site

Oconto Area

Site	Caelwaerts Quarry
ID Number	26750
Address	Maple Grove School Road
Municipality	Oconto
Zip Code	54153
General Directions	East on Maple Grove Road from 41



PETERS CONCRETE COMPANY

Green Bay, Marinette, Bonduel & Fox Cities

Main Office 1516 Atkinson Dr. Green Bay, WI 920-494-3700

www.petersconcrete.com

Ready Mixed Concrete · Excavation · Heavy & Highway · Sewer & Water · Crushing & Aggregates

Oconto Area

Prices Effective February 1, 2026

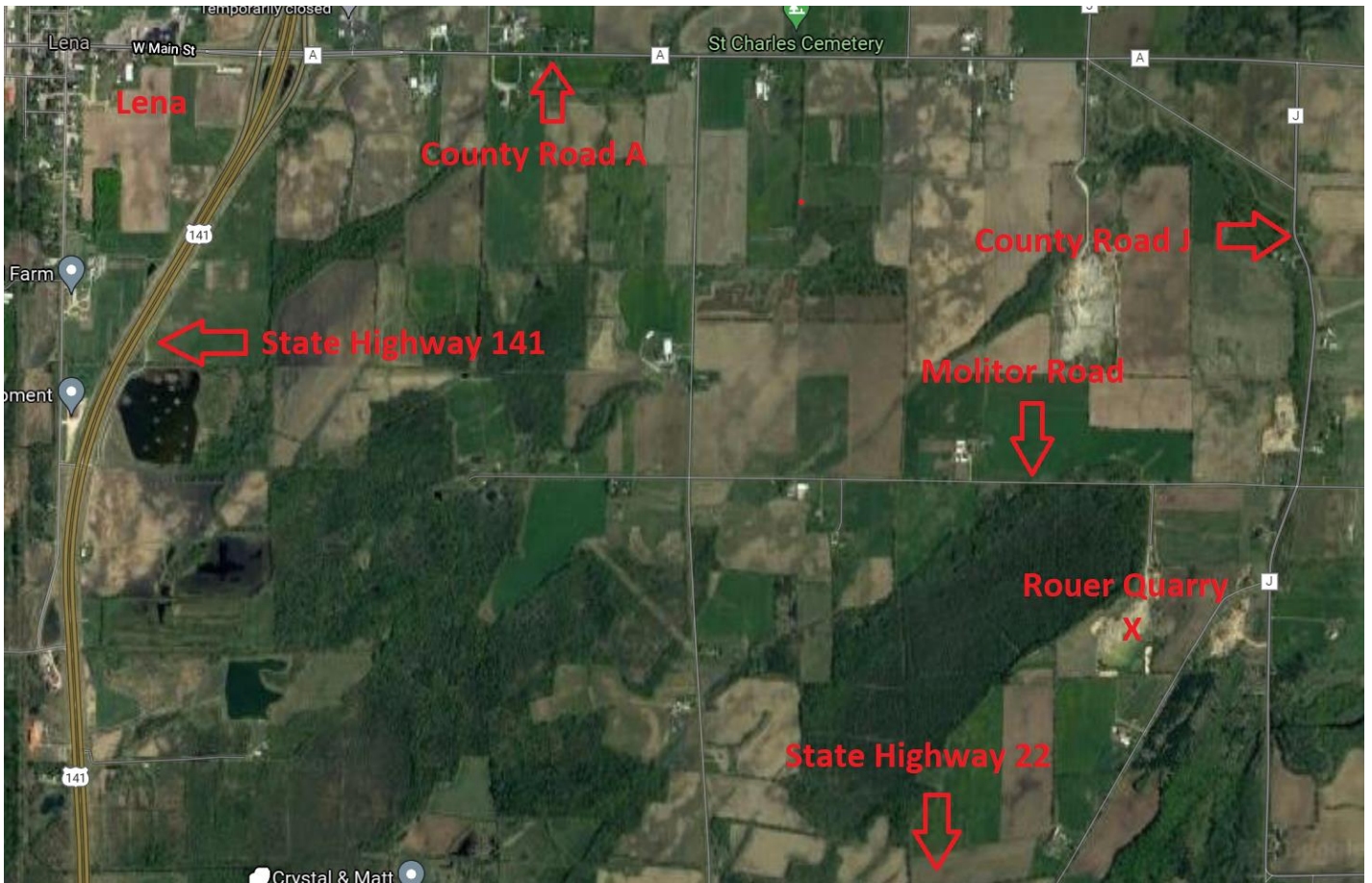
Code	Material	Caelwaerts Quarry
825	3/4" Screened Stone	\$10.00
826	1 1/2" Screened Stone	\$10.00
827	3" Screened	\$10.00
828	3" Crushed Stone	\$9.00
830	Stone Dust	\$9.00
831	3/4" Crushed Stone	\$9.00
832	1 1/4" Crushed Stone	\$9.00
833	Breaker Run	\$8.75
838	Light Rip Rap	\$20.00
839	Medium & Heavy Rip Rap	\$24.00

All Prices Are Per Ton (unless otherwise noted), FOB, and Do Not Include Tax.

All Prices Are Based on Full Load Quantities.

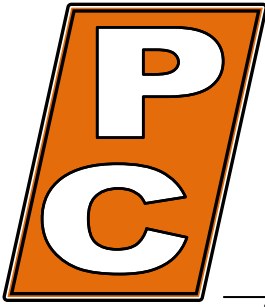
A Minimum charge of \$25.00 applies to all material loaded by Peters Concrete Co.

All Prices Are Subject to Change Without Notice.



Lena Area

Site	Rouer Quarry
ID Number	26733
Address	4601 Molitor Road
Municipality	Oconto
Zip Code	54153
General Directions	Either east on County A from Highway 141; south on County J from County A; west on Molitor Road from County J; or North on J from State Highway 22; west from County J on Molitor Road.



PETERS CONCRETE COMPANY

Green Bay, Marinette, Bonduel & Fox Cities

Main Office 1516 Atkinson Dr. Green Bay, WI 920-494-3700

www.petersconcrete.com

Ready Mixed Concrete · Excavation · Heavy & Highway · Sewer & Water · Crushing & Aggregates

Lena Area

Prices Effective February 1, 2026

Code	Material	Rouer Quarry - 26733
802	Clay Fill	\$4.00/Yard
825	3/4" Screened Stone	\$9.25
826	1 ½" Screened Stone	\$9.25
827	3" Screened	\$9.25
828	3" Crushed Stone	\$8.25
830	Stone Dust	\$8.25
831	3/4" Crushed Stone	\$8.25
832	1 ¼" Crushed Stone	\$8.25
833	Breaker Run	\$8.00
838	Light Rip Rap	\$18.00

All Prices Are Per Ton (unless otherwise noted), FOB, and Do Not Include Tax.

All Prices Are Based on Full Load Quantities.

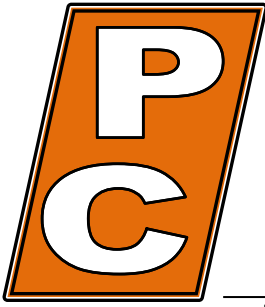
A Minimum charge of \$25.00 applies to all material loaded by Peters Concrete Co.

All Prices Are Subject to Change Without Notice.



Gillett Area

Site	Gillett Quarry
ID Number	26730
Address	10326 Valley Line Road
Municipality	Gillett
Zip Code	54124
General Directions	North on County G from Highway 32; west on Valley Line Road from County G; west on Valley Line Road from County G.



PETERS CONCRETE COMPANY

Green Bay, Marinette, Bonduel & Fox Cities

Main Office 1516 Atkinson Dr. Green Bay, WI 920-494-3700

www.petersconcrete.com

Ready Mixed Concrete · Excavation · Heavy & Highway · Sewer & Water · Crushing & Aggregates

Lena Area

Prices Effective February 1, 2026

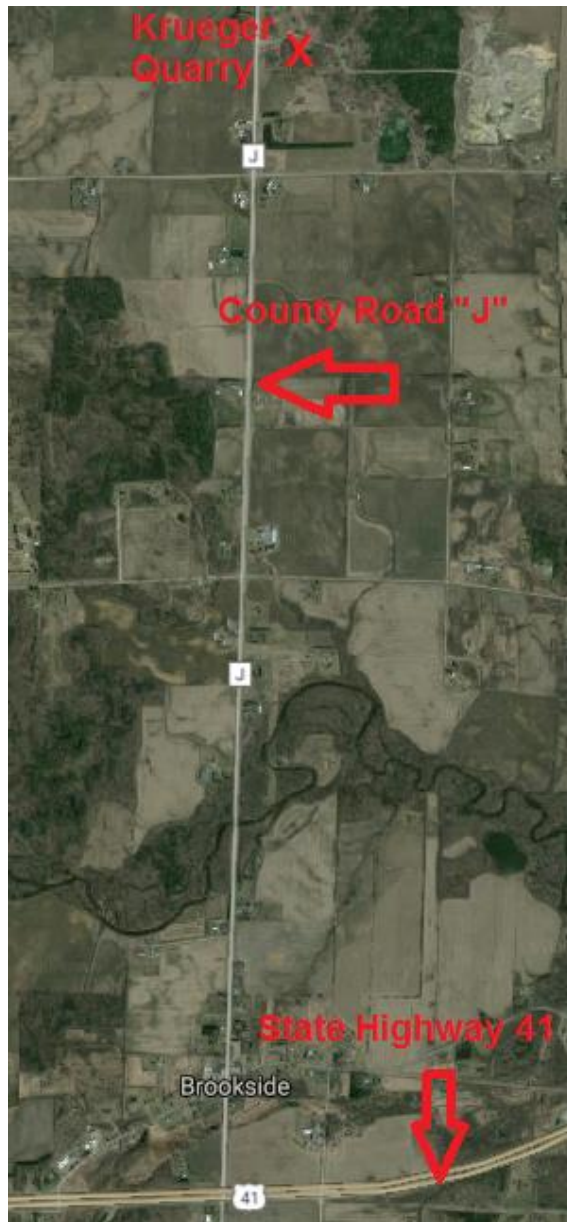
Code	Material	Gillett Quarry – 26730
825	3/4" Screened Stone	\$9.25
826	1 1/2" Screened Stone	\$9.25
827	3" Screened	\$9.25
828	3" Crushed Stone	\$8.25
830	Stone Dust	\$8.25
831	3/4" Crushed Stone	\$8.25
832	1 1/4" Crushed Stone	\$8.25
833	Breaker Run	\$8.00
838	Light Rip Rap	\$20.00
839	Medium Rip Rap	\$24.00
840	Heavy Rip Rap	\$24.00

All Prices Are Per Ton (unless otherwise noted), FOB, and Do Not Include Tax.

All Prices Are Based on Full Load Quantities.

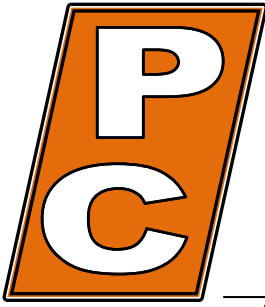
A Minimum charge of \$25.00 applies to all material loaded by Peters Concrete Co.

All Prices Are Subject to Change Without Notice.



Abrams Area

Site	Krueger Quarry
ID Number	26706
Address	4570 County Road J
Municipality	Oconto
Zip Code	54153
General Directions	North on County Road "J" from 41



PETERS CONCRETE COMPANY

Green Bay, Marinette, Bonduel & Fox Cities

Main Office 1516 Atkinson Dr. Green Bay, WI 920-494-3700

www.petersconcrete.com

Ready Mixed Concrete · Excavation · Heavy & Highway · Sewer & Water · Crushing & Aggregates

Oconto Area

Prices Effective February 1, 2026

Code	Material	Krueger Quarry – 26706
802	Clay Fill	\$4.00/Yard
804	Pond Sand	\$3.00/Yard
825	3/4" Screened Stone	\$10.00
826	1 1/2" Screened Stone	\$10.00
827	3" Screened	\$10.00
828	3" Crushed Stone	\$8.50
830	Stone Dust	\$8.50
830	Stone Chips	\$10.00
831	3/4" Crushed Stone	\$8.50
832	1 1/4" Crushed Stone	\$8.50
833	Breaker Run	\$8.00
838	Light Rip Rap	\$20.00
839	Medium Rip Rap	\$24.00
840	Heavy Rip Rap	\$24.00
845	Recycled Black Top	\$9.00
846	1 1/4, 3/4, Breaker Recycled Concrete	\$7.50
854	Topsoil	\$12.00/Yard

All Prices Are Per Ton (unless otherwise noted), FOB, and Do Not Include Tax.

All Prices Are Based on Full Load Quantities.

A Minimum charge of \$25.00 applies to all material loaded by Peters Concrete Co.

All Prices Are Subject to Change Without Notice.

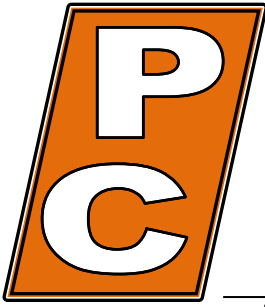
Page 18

An Equal Opportunity Employer



Little Suamico Area

Site	Snyder Quarry
ID Number	26734
Address	2826 County Road S
Municipality	Little Suamico
Zip Code	54141
General Directions	East on County Road "S" from 141/41



PETERS CONCRETE COMPANY

Green Bay, Marinette, Bonduel & Fox Cities

Main Office 1516 Atkinson Dr. Green Bay, WI 920-494-3700

www.petersconcrete.com

Ready Mixed Concrete · Excavation · Heavy & Highway · Sewer & Water · Crushing & Aggregates

Little Suamico Area

Prices Effective February 1, 2026

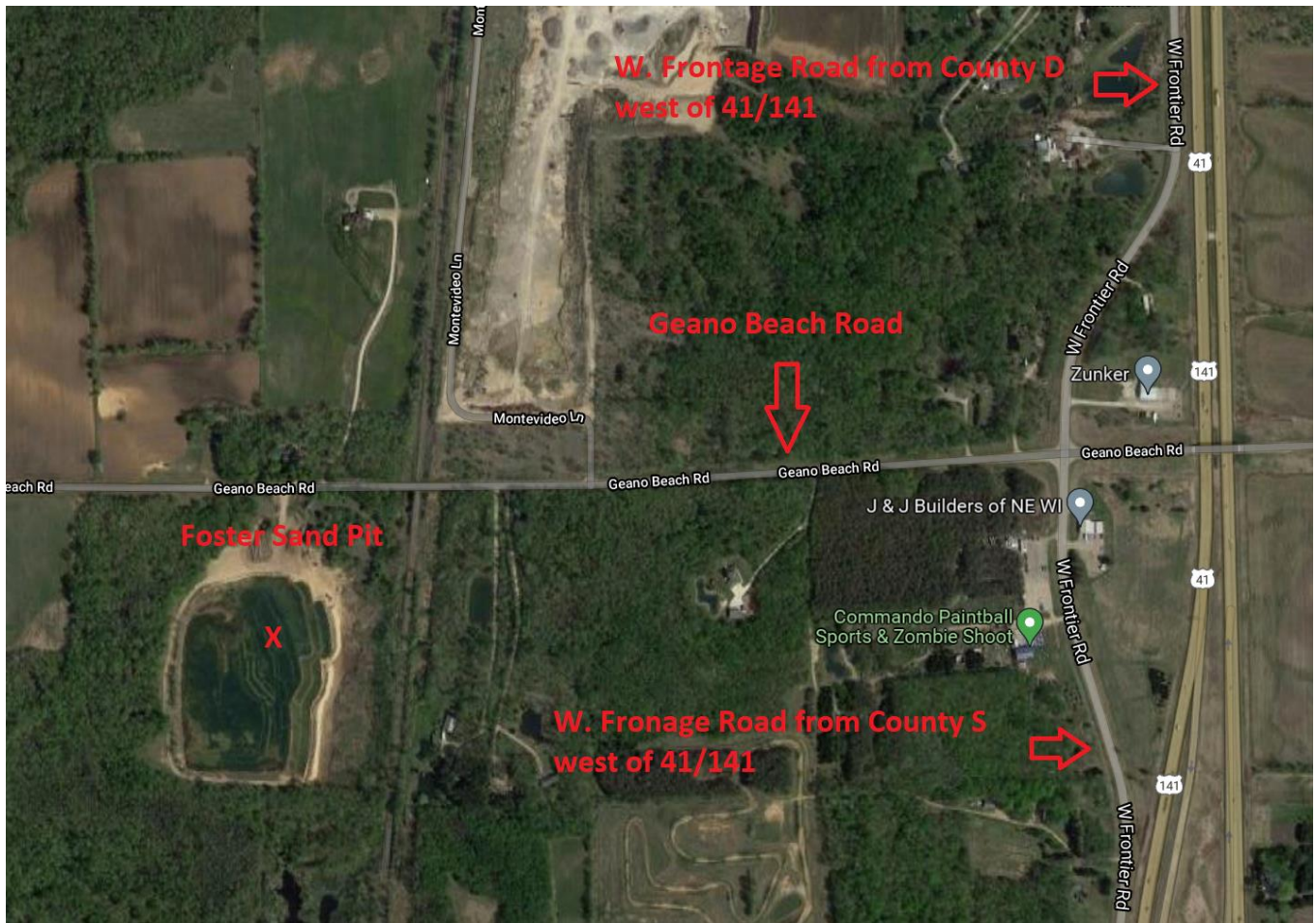
Code	Material	Synder Quarry - 26734
825	3/4" Screened Stone	\$10.00
826	1 1/2" Screened Stone	\$10.00
827	3" Screened	\$10.00
828	3" Crushed Stone	\$8.50
830	Stone Dust	\$8.50
831	3/4" Crushed Stone	\$8.50
832	1 1/4" Crushed Stone	\$10.00
833	Breaker Run	\$8.00
838	Light Rip Rap	\$20.00
845	Recycled Black Top	\$9.00
846	Recycled Concrete	\$7.50

All Prices Are Per Ton (unless otherwise noted), FOB, and Do Not Include Tax.

All Prices Are Based on Full Load Quantities.

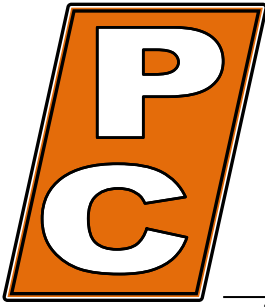
A Minimum charge of \$25.00 applies to all material loaded by Peters Concrete Co.

All Prices Are Subject to Change Without Notice.



Abrams Area

Site	Foster Sand Pit
ID Number	26729
Address	5997 Geano Beach Road
Municipality	Abrams
Zip Code	54101
General Directions	Either South on W. Frontage Road on County D from 41/141 or North on W. Frontage Road on County S from 41/141, to Geano Beach Road, West on Geano Beach Road.



PETERS CONCRETE COMPANY

Green Bay, Marinette, Bonduel & Fox Cities

Main Office 1516 Atkinson Dr. Green Bay, WI 920-494-3700

www.petersconcrete.com

Ready Mixed Concrete · Excavation · Heavy & Highway · Sewer & Water · Crushing & Aggregates

Abrams Area

Prices Effective February 1, 2026

Code	Material	Foster Sand Pit - 26729
803	Fill Sand	\$5.50/Yard
854	Topsoil	\$12.00/Yard

All Prices Are Per Ton (unless otherwise noted), FOB, and Do Not Include Tax.

All Prices Are Based on Full Load Quantities.

A Minimum charge of \$25.00 applies to all material loaded by Peters Concrete Co.

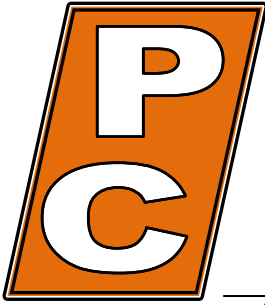
All Prices Are Subject to Change Without Notice.



X Peters Site

Pulaski – Abrams - Suamico Area

Site	Gohr Road Quarry
ID Number	26793
Address	8658 Gohr Road
Municipality	Krakov
Zip Code	55137
General Directions	West on County Road S from Highways 41/141; North on County Road C; West on Gohr Road.



PETERS CONCRETE COMPANY

Green Bay, Marinette, Bonduel & Fox Cities

Main Office 1516 Atkinson Dr. Green Bay, WI 920-494-3700

www.petersconcrete.com

Ready Mixed Concrete · Excavation · Heavy & Highway · Sewer & Water · Crushing & Aggregates

Pulaski – Abrams - Suamico Area

Prices Effective February 1, 2026

Code	Material	Gohr Quarry - 26793
802	Clay Fill	\$4.00/Yard
825	3/4" Crushed Stone	\$10.00
826	1 1/2" Screened Stone	\$10.00
827	3" Screened	\$10.00
828	3" Crushed Stone	\$8.50
830	Stone Dust	\$8.50
830	Stone Chips	\$10.00
831	3/4" Crushed Stone	\$8.50
832	1 1/4" Crushed Stone	\$8.50
833	Breaker Run	\$8.00
854	Topsoil	\$12.00/Yard

All Prices Are Per Ton (unless otherwise noted), FOB, and Do Not Include Tax.

All Prices Are Based on Full Load Quantities.

A Minimum charge of \$25.00 applies to all material loaded by Peters Concrete Co.

All Prices Are Subject to Change Without Notice.

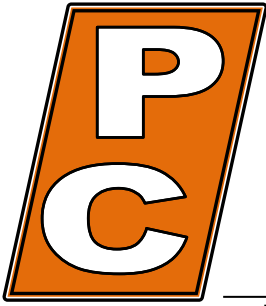
An Equal Opportunity Employer



X Peters Site

Pulaski - Suamico Area

Site	Chase Quarry
ID Number	26705
Address	1321 Yurek Road
Municipality	Pulaski
Zip Code	54162
General Directions	West on County Road "S" from 41/141; North on Yurek Road



PETERS CONCRETE COMPANY

Green Bay, Marinette, Bonduel & Fox Cities

Main Office 1516 Atkinson Dr. Green Bay, WI 920-494-3700

www.petersconcrete.com

Ready Mixed Concrete · Excavation · Heavy & Highway · Sewer & Water · Crushing & Aggregates

Pulaski - Suamico Area

Prices Effective February 1, 2026

Code	Material	Chase Quarry - 26705
802	Clay Fill	\$4.00/Yard
825	3/4" Screened Stone	\$10.00
826	1 1/2" Screened Stone	\$10.00
827	3" Screened	\$10.00
828	3" Crushed Stone	\$8.50
830	Stone Dust	\$8.50
830	Stone Chips	\$10.00
831	3/4" Crushed Stone	\$8.50
832	1 1/4" Crushed Stone	\$8.50
833	Breaker Run	\$8.00
845	Recycled Black Top	\$9.00
846	Recycled Concrete	\$7.50
854	Topsoil	\$12.00/Yard

All Prices Are Per Ton (unless otherwise noted), FOB, and Do Not Include Tax.

All Prices Are Based on Full Load Quantities.

A Minimum charge of \$25.00 applies to all material loaded by Peters Concrete Co.

All Prices Are Subject to Change Without Notice.

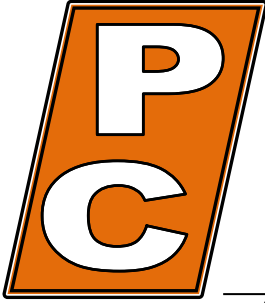
An Equal Opportunity Employer



X Peters Site

Bonduel Area

Site	Bonduel Concrete/Wash Plant/Przybylski Pit
ID Number	26710
Address	N3601 State Highway 47
Municipality	Bonduel
Zip Code	54107
General Directions	South on State Highway 14 from 29



PETERS CONCRETE COMPANY

Green Bay, Marinette, Bonduel & Fox Cities

Main Office 1516 Atkinson Dr. Green Bay, WI 920-494-3700

www.petersconcrete.com

Ready Mixed Concrete · Excavation · Heavy & Highway · Sewer & Water · Crushing & Aggregates

Bonduel Area

Prices Effective February 1, 2026

Code	Material	Bonduel Wash Plant/Plant 5/Przybylski Pit - 26710
804	Pond Sand	\$3.00/Yard
808	Washed Sand	\$15.00
825	¾" Screened Stone	\$16.00
826	1 ½" Screened Stone	\$16.00
828	3" Crushed Stone	\$14.50
830	Stone Dust	\$14.50
831	¾" Crushed Stone	\$14.50
832	1 ¼" Crushed Stone	\$14.50
834	Pit Run	\$8.00
843	¾" Crushed Gravel	\$8.00
844	1 ¼" Crushed Gravel	\$8.00
845	Recycled Asphalt	\$9.00/Ton
846	1 ¼" Recycled Concrete	\$8.00/Ton
849	¾" Mississippi River Rock	\$50.00
850	1 ½" Mississippi River Rock	\$50.00
854	Topsoil	\$16.00/Yard
855	Pulverized Topsoil	\$25.00/Yard
867	Pea Stone	\$10.00
868	¾" Washed Stone	\$10.00
869	1 ½" Washed Stone	\$10.00
880	Red Mulch	\$40.00/Yard
881	Dark Brown Mulch	\$40.00/Yard
882	Natural Color Mulch	\$40.00/Yard
	Concrete Blocks/Barriers	Call for price

All Prices Are Per Ton (unless otherwise noted), FOB, and Do Not Include Tax.

All Prices Are Based on Full Load Quantities.

A Minimum charge of \$25.00 applies to all material loaded by Peters Concrete Co.

All Prices Are Subject to Change Without Notice.



X Peters Site

Green Bay Area

Sites	Yard/Wash Plant # 8
ID Number	26708
Address	1516 Atkinson Drive
Municipality	Green Bay
Zip Code	54303
General Directions	North on Atkinson Drive off Highway 1-43 in Green Bay



PETERS CONCRETE COMPANY

Green Bay, Marinette, Bonduel & Fox Cities

Main Office 1516 Atkinson Dr. Green Bay, WI 920-494-3700

www.petersconcrete.com

Ready Mixed Concrete · Excavation · Heavy & Highway · Sewer & Water · Crushing & Aggregates

Green Bay Area -Prices Effective February 1, 2026

Code	Material	Yard/Wash Plant # 8 - 26708
802	Clay Fill	\$5.00/Yard
803	Fill Sand	\$6.50/Yard
808	Washed Sand	\$16.00
809	Pond Sand	\$4.00/Yard
810	Mason Sand	\$20.00
825	3/4" Screened Stone	\$16.00
826	1 1/2" Screened Stone	\$16.00
827	3" Screened	\$16.00
830	Stone Dust	\$14.50
831	3/4" Crushed Stone	\$14.50
832	1 1/4" Crushed Stone	\$14.50
833	Breaker Run	\$14.00
838	Light Rip Rap	\$26.00
839	Medium Rip Rap	\$32.00
840	Heavy/Large Rip Rap	\$32.00
843	3/4" Crushed Gravel	\$14.00
844	1 1/4" Crushed Gravel	\$14.00
845	Recycled Asphalt	\$9.50
846	1 1/4" Recycled Concrete	\$8.50
854	Topsoil	\$16.00/Yard
855	Pulverized Topsoil	\$25.00/Yard
867	Pea Stone	\$15.00
868	3/4" Washed Stone	\$15.00
869	1 1/2" Washed Stone	\$15.00
	Concrete Blocks/Barriers	Call for price

All Prices Are Per Ton (unless noted), FOB, and Do Not Include Tax. All Prices Are Based on Full Load Quantities.

A Minimum charge of \$25.00 applies to all material loaded by Peters Concrete Co.

All Prices Are Subject to Change Without Notice.

Page 30

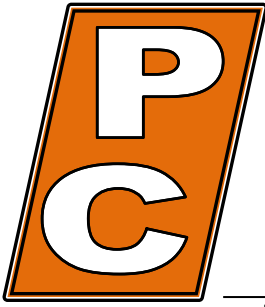
An Equal Opportunity Employer



X Peters Site

Brussels Area

Site	Brussels Pit
ID Number	26786
Address	County Road Y
Municipality	Brussels
Zip Code	54204
General Directions	South on County Road Y from State Highway 57



PETERS CONCRETE COMPANY

Green Bay, Marinette, Bonduel & Fox Cities

Main Office 1516 Atkinson Dr. Green Bay, WI 920-494-3700

www.petersconcrete.com

Ready Mixed Concrete · Excavation · Heavy & Highway · Sewer & Water · Crushing & Aggregates

Brussels Area

Prices Effective February 1, 2026

Code	Material	Brussels Pit - 26786
803	Fill Sand	\$5.50/Yard
825	3/4" Screened Stone	\$10.00
826	1 1/2" Screened Stone	\$10.00
843	3/4" Crushed Gravel	\$8.50
844	1 1/4" Crushed Gravel	\$8.50
846	1 1/4" Recycled Concrete	\$8.00

All Prices Are Per Ton (unless otherwise noted), FOB, and Do Not Include Tax.

All Prices Are Based on Full Load Quantities.

A Minimum charge of \$25.00 applies to all material loaded by Peters Concrete Co.

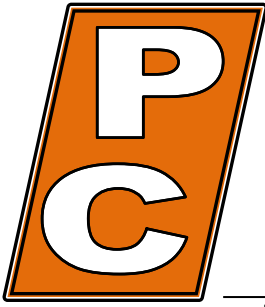
All Prices Are Subject to Change Without Notice.



X Peters Site

Maribel Area

Site	Cooperstown Pit
ID Number	26785
Address	County Road NN
Municipality	Maribel
Zip Code	54227
General Directions	West on State Highway from Highway 1-43; South on County Road NN



PETERS CONCRETE COMPANY

Green Bay, Marinette, Bonduel & Fox Cities

Main Office 1516 Atkinson Dr. Green Bay, WI 920-494-3700

www.petersconcrete.com

Ready Mixed Concrete · Excavation · Heavy & Highway · Sewer & Water · Crushing & Aggregates

Maribel Area

Prices Effective February 1, 2026

Code	Material	Cooperstown Pit - 26785
803	Fill Sand	\$5.00/Yard
834	Pit Run	\$8.00
843	3/4" Crushed Gravel	\$8.50
844	1 ¼" Crushed Gravel	\$8.50
846	1 ¼" Recycled Concrete	\$7.50

All Prices Are Per Ton (unless otherwise noted), FOB, and Do Not Include Tax.

All Prices Are Based on Full Load Quantities.

A Minimum charge of \$25.00 applies to all material loaded by Peters Concrete Co.

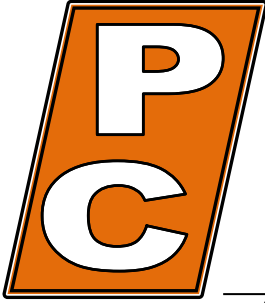
All Prices Are Subject to Change Without Notice.



X Peters Site

Appleton Area

Site	Deerview Yard
ID Number	26762
Address	W. Deerview Drive
Municipality	Appleton
Zip Code	54913
General Directions	North (about 2 miles) on State Highway 47/N. Richmond Street from State Highway 41; West on W. Deerview Drive



PETERS CONCRETE COMPANY

Green Bay, Marinette, Bonduel & Fox Cities

Main Office 1516 Atkinson Dr. Green Bay, WI 920-494-3700

www.petersconcrete.com

Ready Mixed Concrete · Excavation · Heavy & Highway · Sewer & Water · Crushing & Aggregates

Appleton Area

Prices Effective February 1, 2026

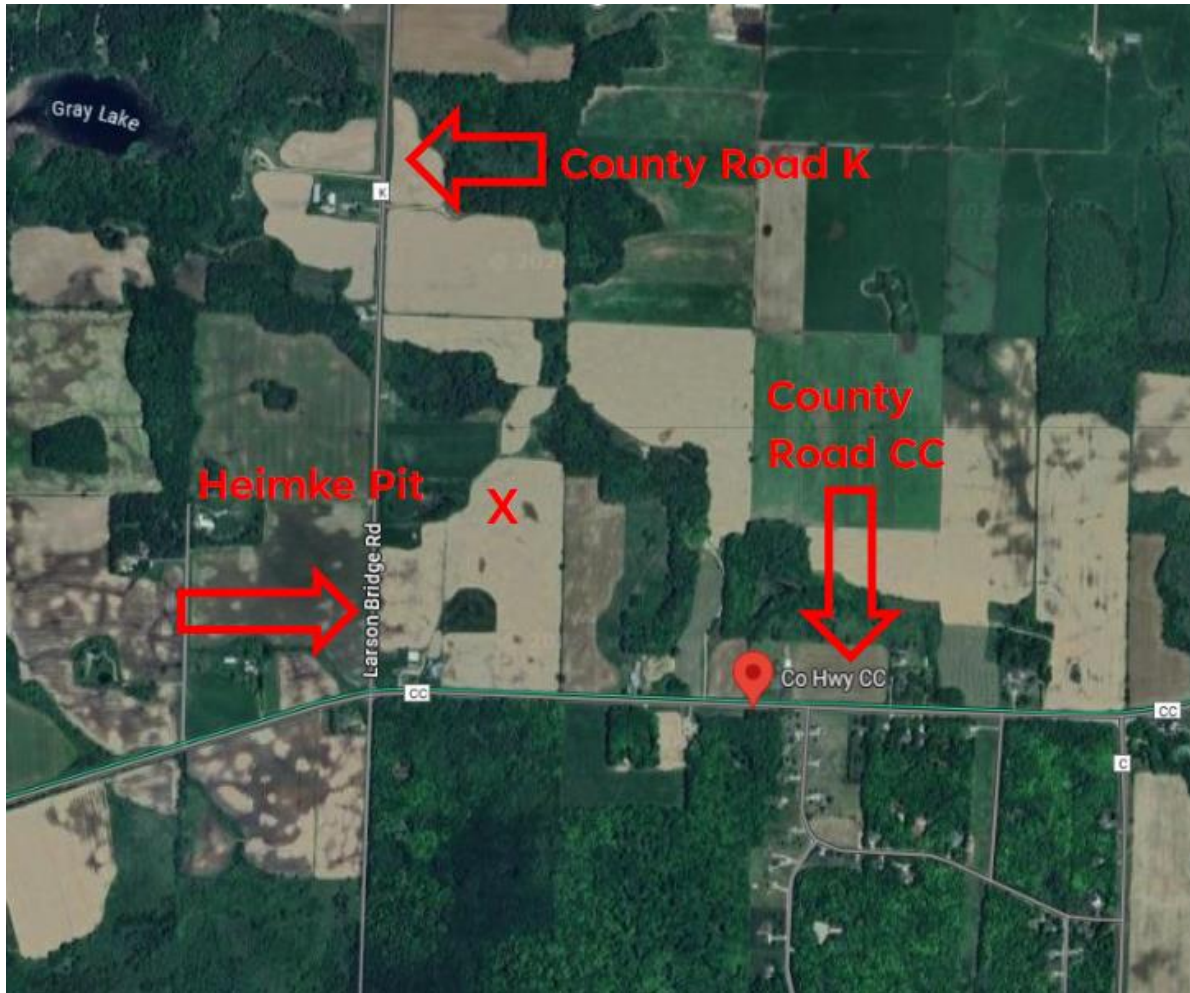
Code	Material	Deerview Yard - 26762
803	Fill Sand	\$6.50
845	1 ¼" Recycled Concrete	\$8.50
846	Recycled Asphalt	\$9.50
854	Topsoil	\$16.00

All Prices Are Per Ton (unless otherwise noted), FOB, and Do Not Include Tax.

All Prices Are Based on Full Load Quantities.

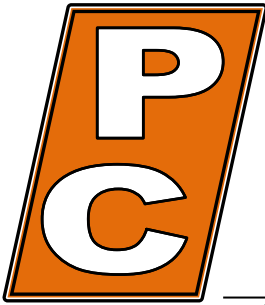
A Minimum charge of \$25.00 applies to all material loaded by Peters Concrete Co.

All Prices Are Subject to Change Without Notice.



Oconto Falls Area

Site	Heimke Pit
ID Number	26738
Address	8884 County Road CC
Municipality	Oconto Falls
Zip Code	54154
General Directions	Corner of County CC and County K West of Oconto Falls



PETERS CONCRETE COMPANY

Green Bay, Marinette, Bonduel & Fox Cities

Main Office 1516 Atkinson Dr. Green Bay, WI 920-494-3700

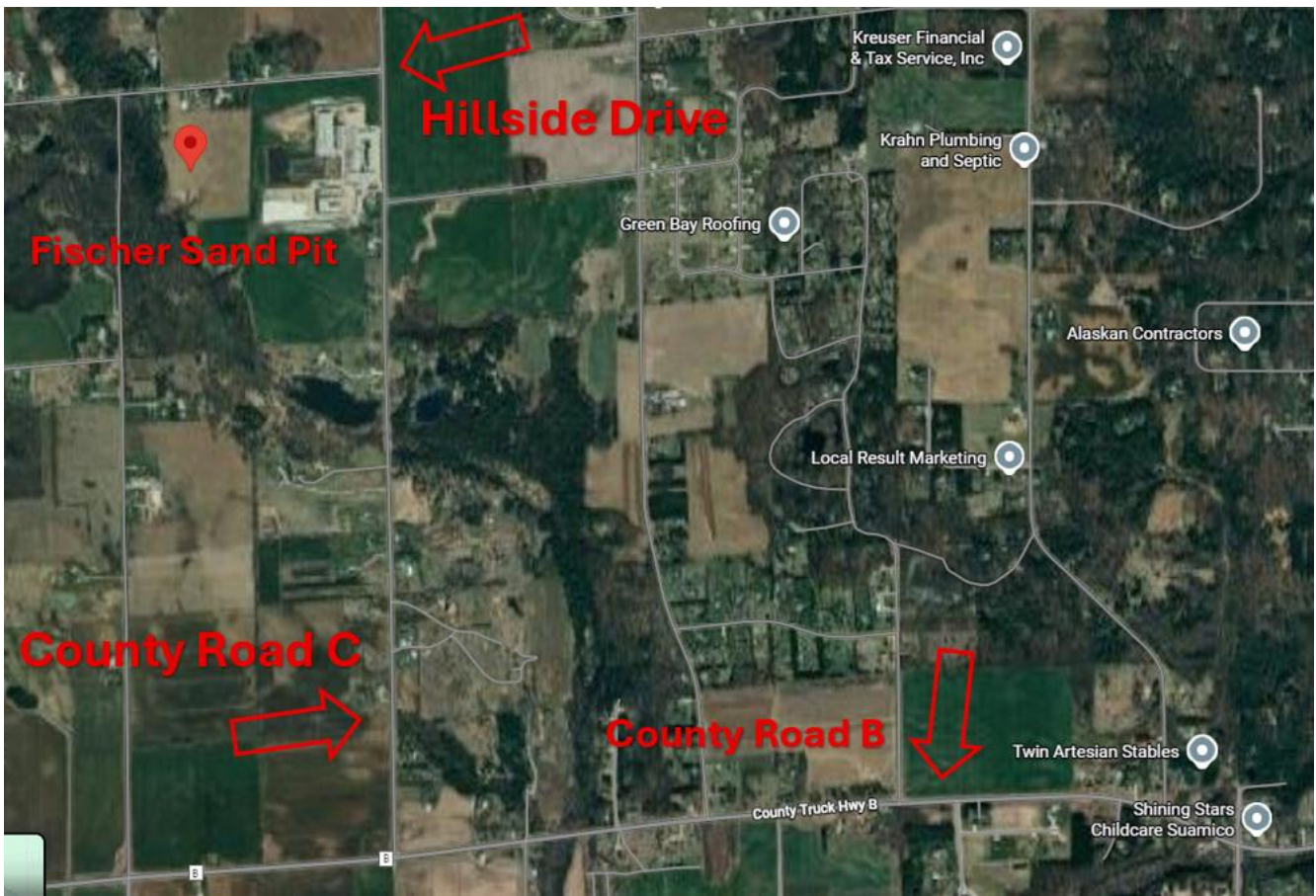
www.petersconcrete.com

Ready Mixed Concrete · Excavation · Heavy & Highway · Sewer & Water · Crushing & Aggregates

Oconto Falls Area

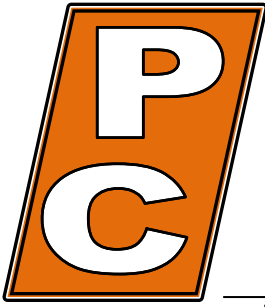
Prices Effective February 1, 2026

Code	Material	Heimke Pit – 26738
802	Clay Fill	\$3.00/Yard
803	Fill Sand	\$6.00/Yard
834	Pit Run	\$8.00
843	3/4" Crushed Gravel	\$8.50
844	1 ¼" Crushed Gravel	\$8.50
854	Topsoil	\$12.00/Yard



Pulaski Area

Site	Fischer Sand Pit
ID Number	26740
Address	4495 Hillside Drive
Municipality	Pulaski
Zip Code	54162
General Directions	West on County B from State Highway 41, continue on County B for about 16 miles, North on County C for a mile and a half. Left on Hillside Drive for a half mile, entrance to the left.



PETERS CONCRETE COMPANY

Green Bay, Marinette, Bonduel & Fox Cities

Main Office 1516 Atkinson Dr. Green Bay, WI 920-494-3700

www.petersconcrete.com

Ready Mixed Concrete · Excavation · Heavy & Highway · Sewer & Water · Crushing & Aggregates

Pulaski Area

Prices Effective February 1, 2026

Code	Material	Fischer Sand Pit - 26740
803	Fill Sand	\$6.50/Yard