

PETERS CONCRETE CO.

GREEN BAY, MARINETTE & BONDUEL

920 – 494 – 3700

**Crushing and Aggregate; Excavation - Heavy and Highway; Sewer and Water
Ready Mix Concrete**

2025

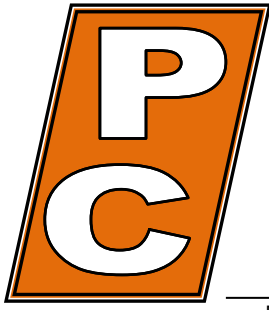
Material Prices

Prices Effective

February 1, 2025

www.petersconcrete.com

An Equal Opportunity Employer



PETERS CONCRETE COMPANY

Main Office / Plant

1516 Atkinson Drive
Green Bay, WI 54303
Phone (920) 494-3700
Fax (920) 494-5475

Marinette Plant

1604 W. Cleveland Ave.
Marinette, WI 54143
Phone 1-800-735-1505
Fax (715) 732-9028

Bonduel Plant

N3601 State Highway 47
Bonduel, WI 54107
Phone (715) 758-2363
Fax (715) 758-6362

www.petersconcrete.com

Ready Mixed Concrete · Excavation · Heavy & Highway · Sewer & Water · Crushing & Aggregates

February 1, 2025

To: Peters Concrete Company Customers

Re: 2025 Material Prices

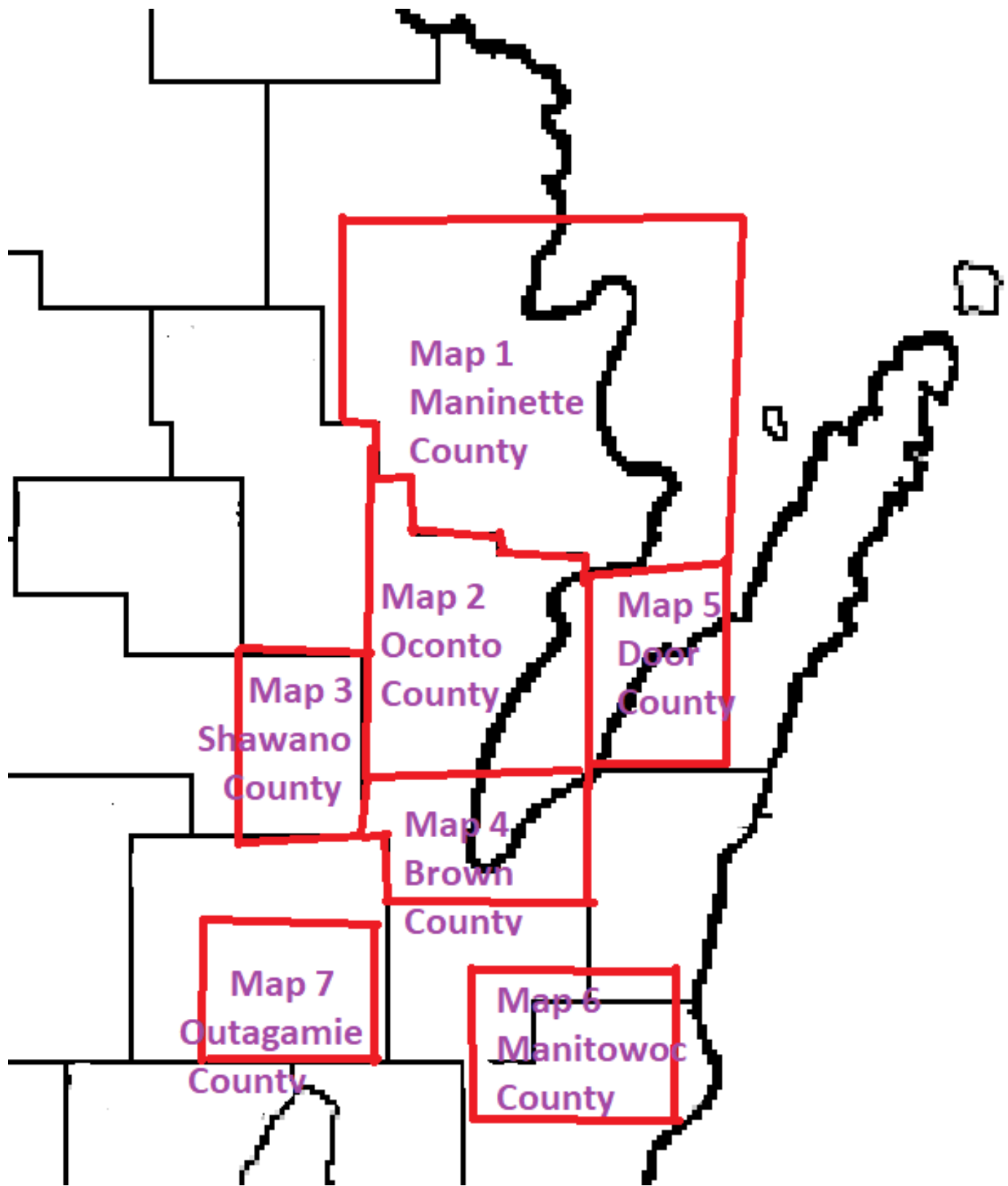
Dear Customers:

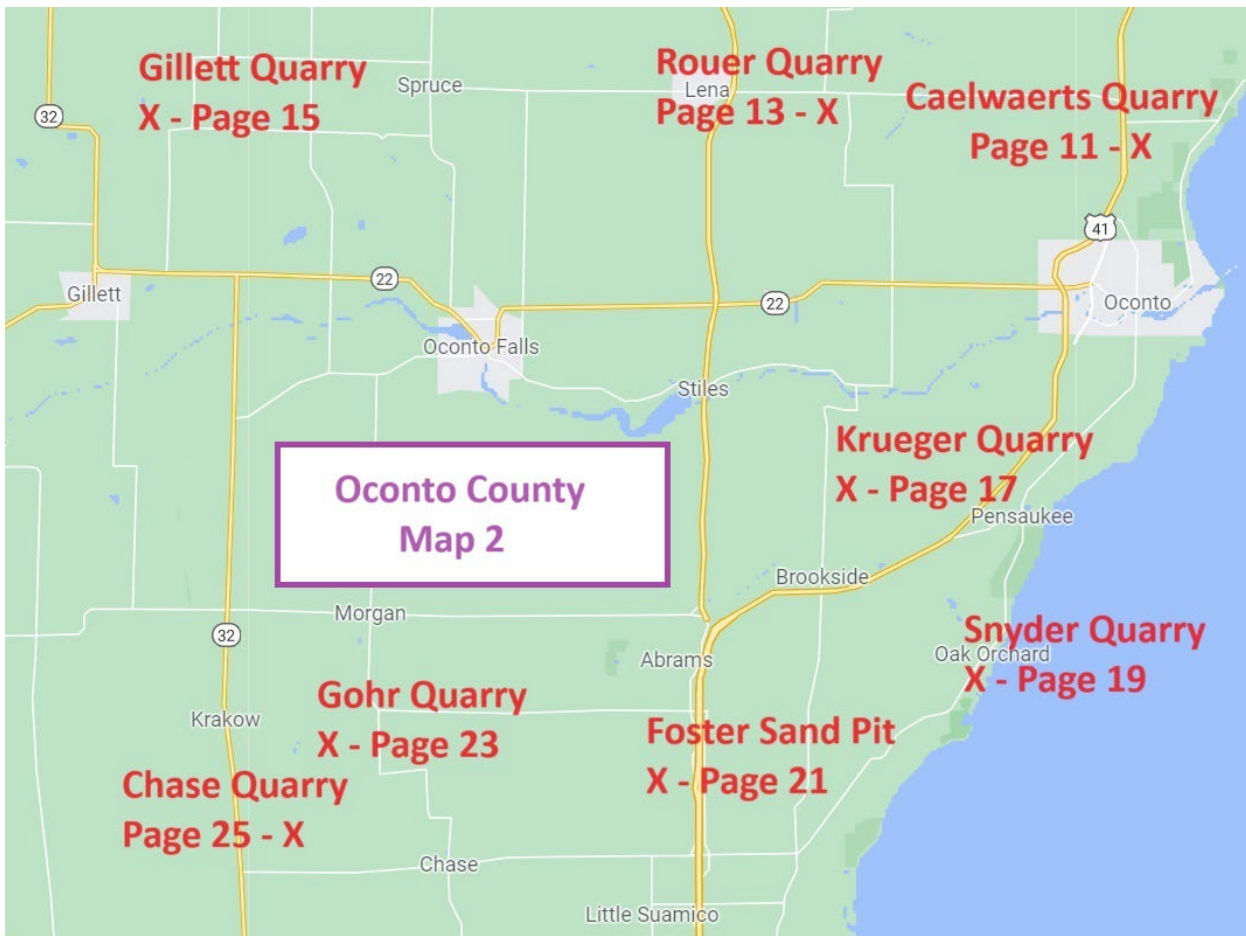
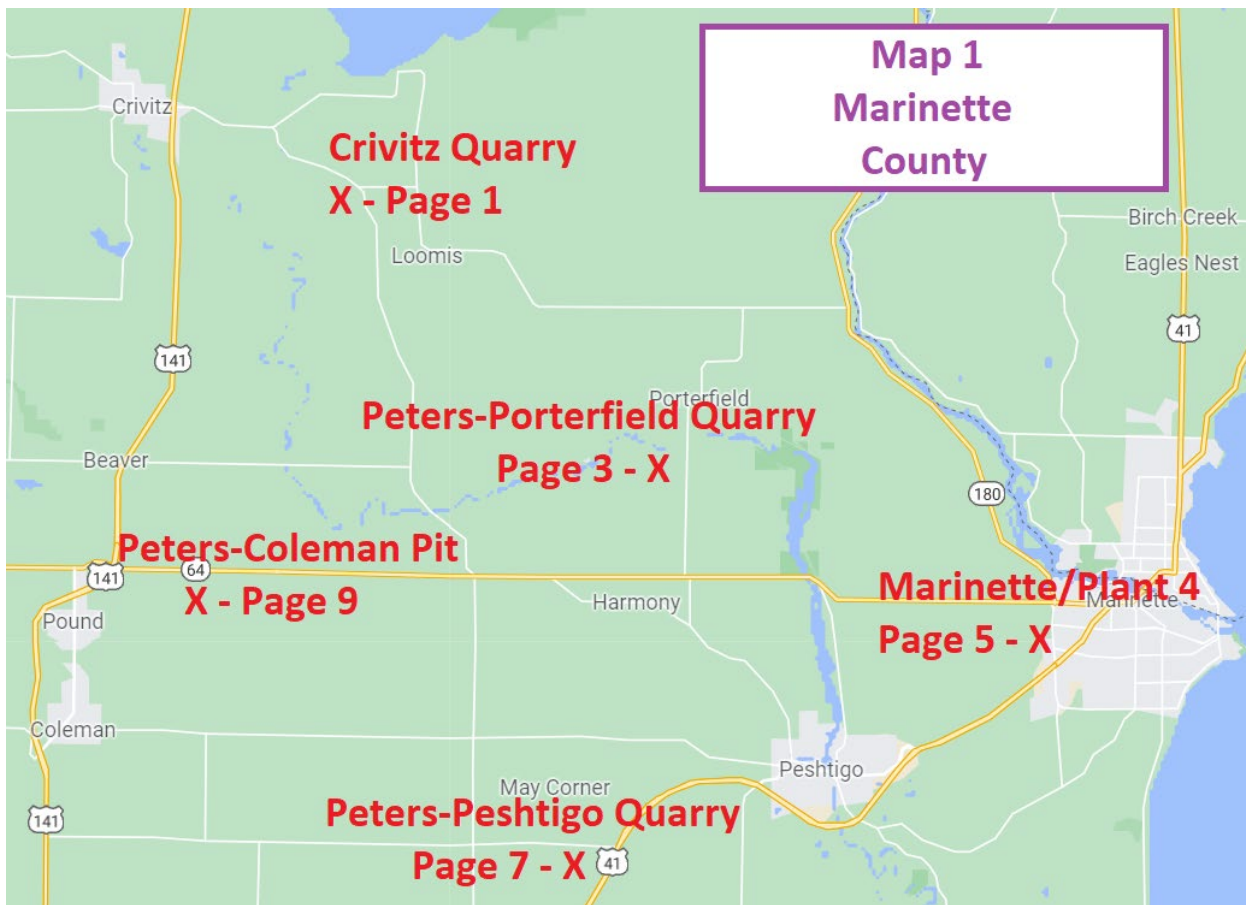
Peters Concrete Company is pleased to provide the enclosed price list for the 2025 construction season. The listed prices will be effective February 1, 2025. Included are maps showing locations of our quarries and pits and a list of additional sites and their locations that Peters Concrete Company sells materials out of. If pricing is not shown for a location that you are interested in, please call and we will be happy to provide a quote from the closest quarry or pit.

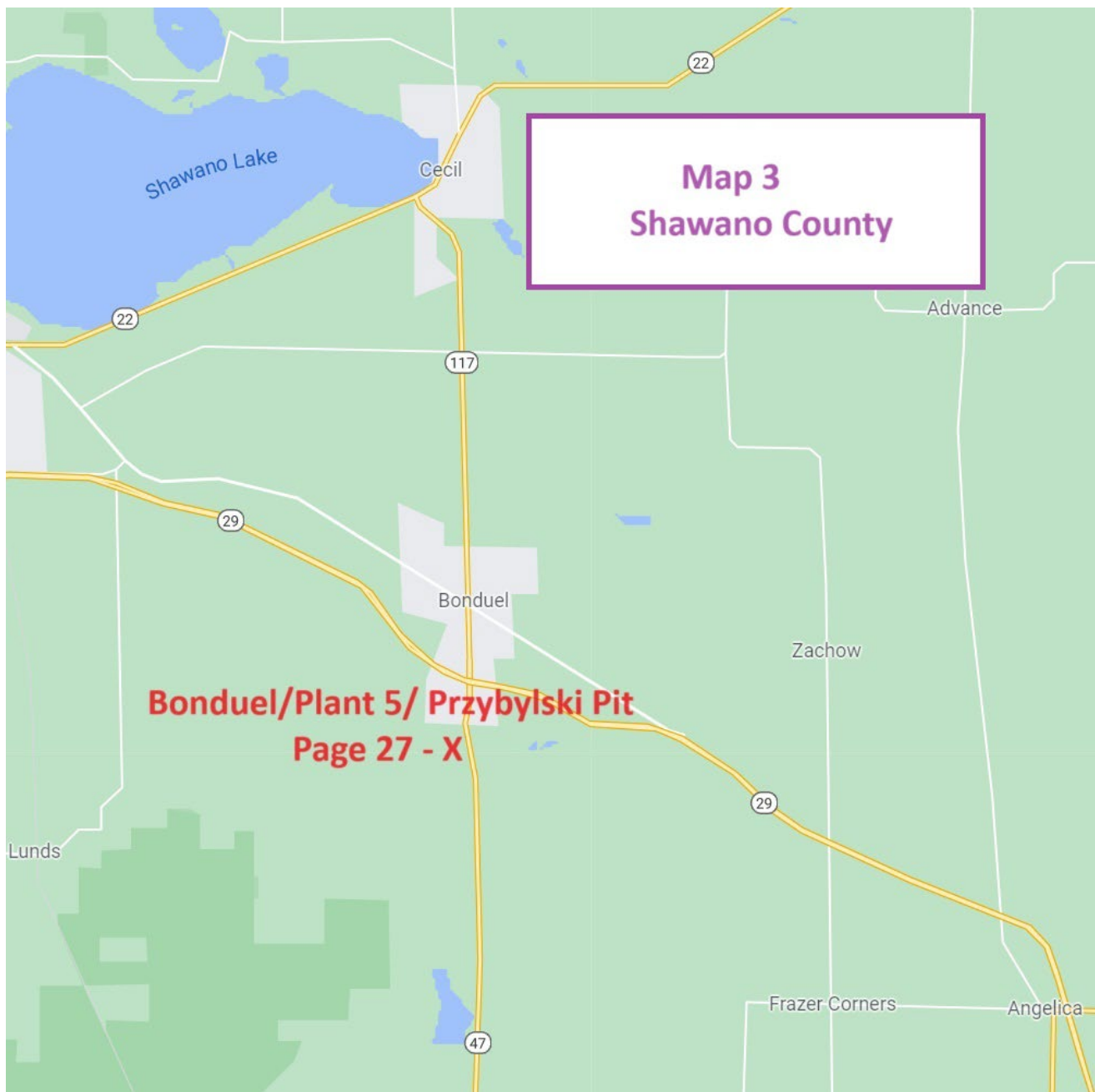
If you need a quote on material, need a large amount of material or further information, please call 920-494-3700.

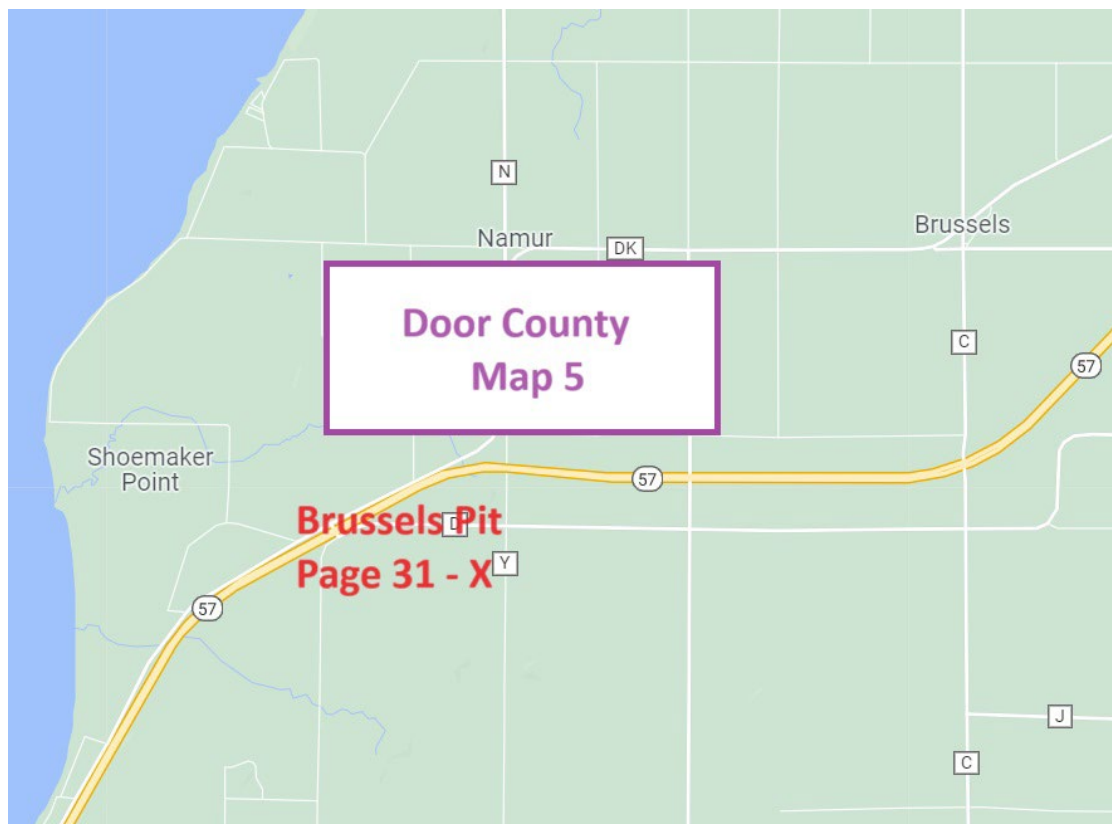
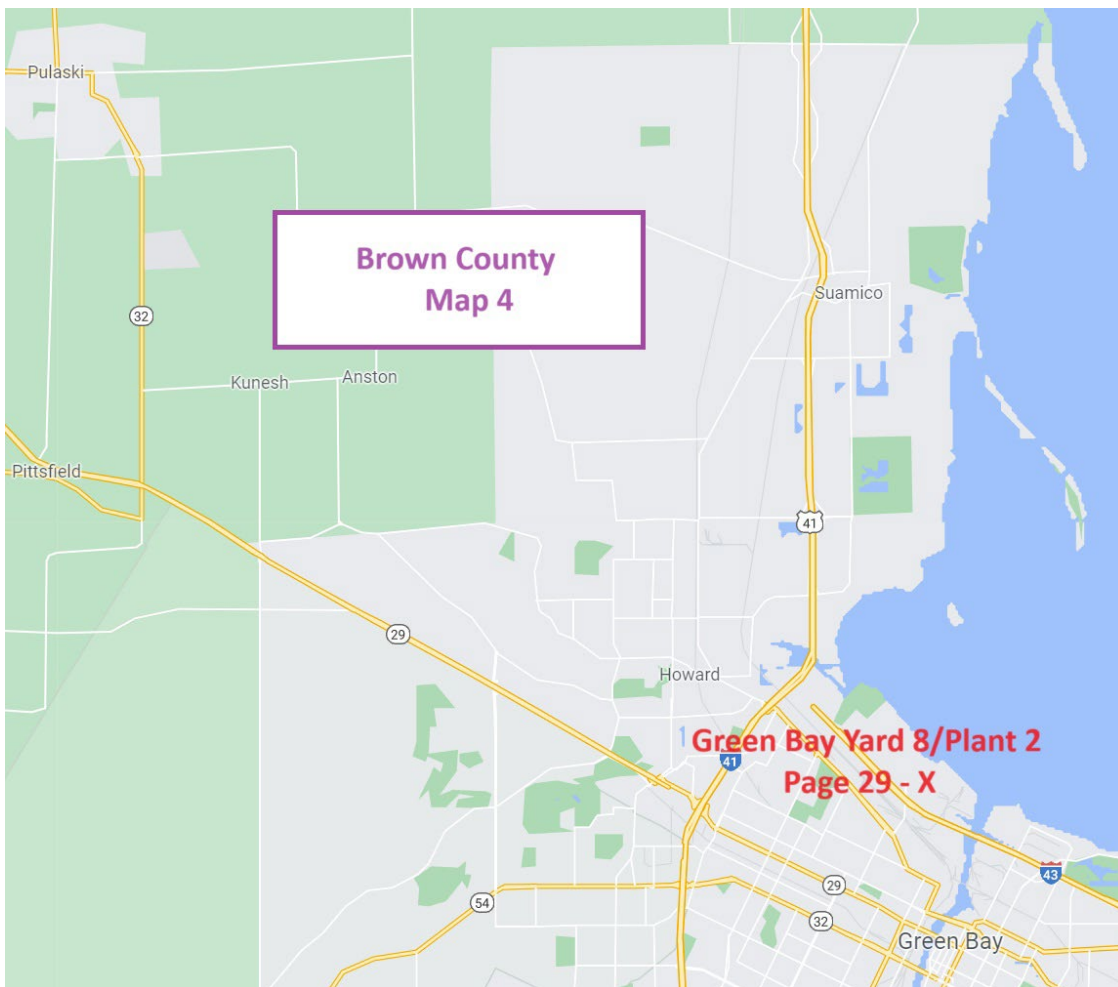
Have a great 2025 construction season.

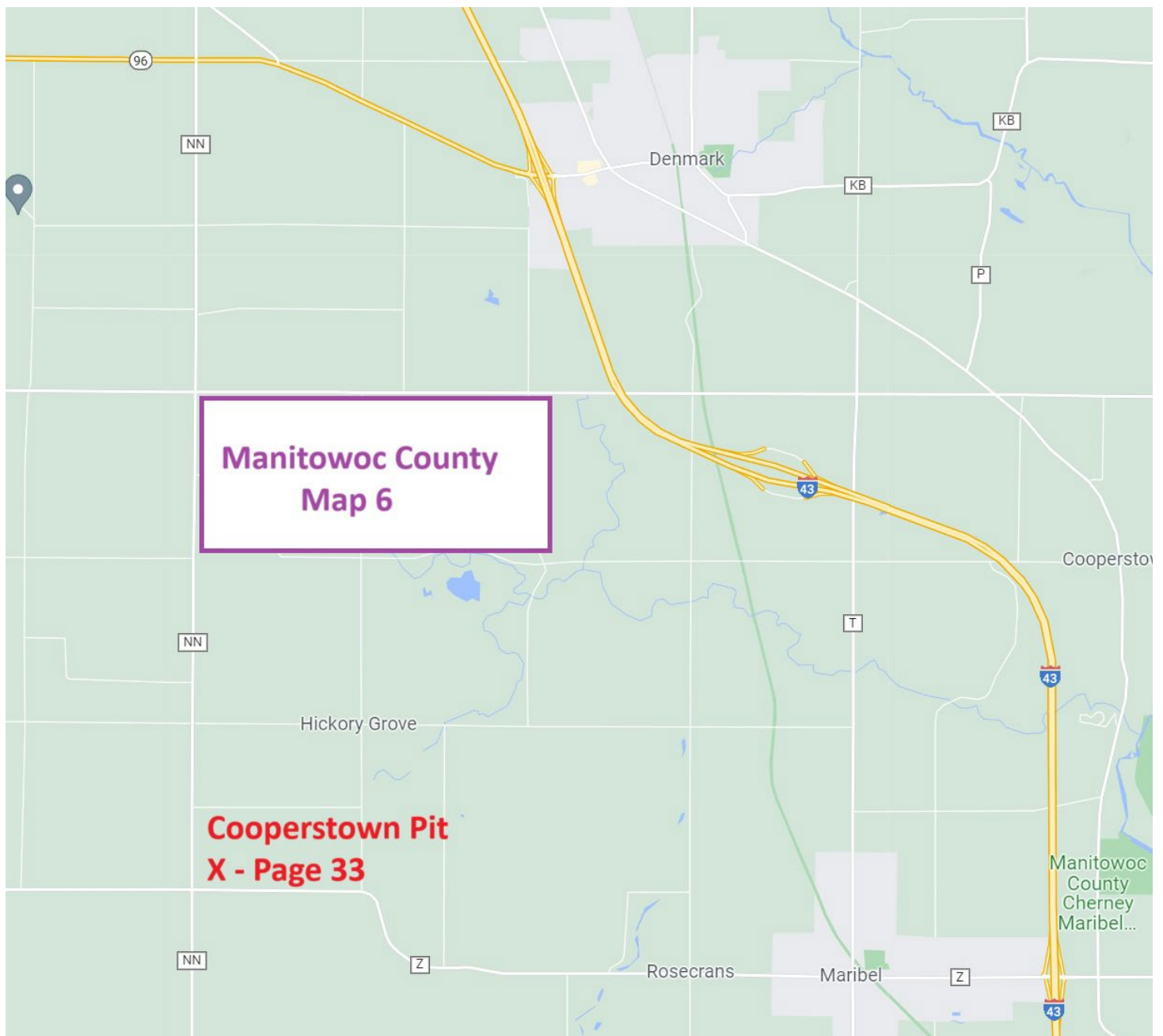
Sincerely,
Peters Concrete Company













PAGE INDEX

	Site No.	Price Page	Map Page
Crivitz Quarry	25756	2	1
Porterfield Pit	25753	4	3
Marinette/Plant 4	25704	6	5
Peters-Peshtigo (Formerly Biundo) Quarry	25737	8	7
Peters-Coleman (Formerly Noll) Pit	25748	10	9
Caelwaerts Quarry	25750	12	11
Rouer Quarry	25733	14	13
Gillett Quarry	25730	16	15
Krueger Quarry	25706	18	17
Snyder Quarry	25734	20	19
Foster Sand Pit	25729	22	21
Gohr Quarry	25793	24	23
Chase Quarry	25705	26	25
Bonduel/Wash Plant 5/Przybyski Pit	25710	28	27
Wash Plant/Yard 8	25708	30	29
Green Bay/Plant 2	25702	30	29
Brussels Pit	25786	32	31
Cooperstown Pit	25785	34	33
Deerview Yard	25762	36	35

List of Quarries/Pits



PETERS CONCRETE COMPANY

Main Office / Plant

1516 Atkinson Drive
Green Bay, WI 54303
Phone (920) 494-3700
Fax (920) 494-5475

Marinette Plant

1604 W. Cleveland Ave.
Marinette, WI 54143
Phone 1-800-735-1505
Fax (715) 732-9028

Bonduel Plant

N3601 State Highway 47
Bonduel, WI 54107
Phone (715) 758-2363
Fax (715) 758-6362

www.petersconcrete.com

Ready Mixed Concrete • Excavation • Heavy & Highway • Sewer & Water • Crushing & Aggregates

Material List

<u>Code</u>	<u>Material</u>	<u>Unit</u>
802	Clay Fill	Yards
803	Sand Fill	Yards
804	Fill	Yards
808	Washed Sand	Tons
809	Pond Sand	Yards
810	Mason Sand (tons)	Tons
811	Screened Sand	Tons
817	Backfill	Yards
818	Backfill, Granular	Yards
819	Backfill, Structural	Yards
820	Backfill, MSE Wall	Yards
824	5/8" Screened (Stone Chips)	Tons
825	3/4" Screened Stone	Tons
826	1 1/2" Screened Stone	Tons
827	3" Screened	Tons
828	3" Crushed Stone	Tons
830	3/8" Stone/Crusher Dust	Tons
831	3/4" Crushed Stone	Tons
832	1 1/4" Crushed stone	Tons
833	Break Run	Tons
834	Pit Run	Tons
837	Rip Rap	Tons
838	Rip Rap - Light	Tons
839	Rip Rap - Medium	Tons
840	Rip Rap - Heavy/Large	Tons
841	Shot Stone	Tons
842	Flag Stone	Tons
843	3/4" Crushed Gravel	Tons
844	1 1/4" Crushed Gravel	Tons
845	Recycled Asphalt	Tons
846	1 1/4" Recycled Concrete	Tons
849	3/4" Mississippi River Stone	Tons

An Equal Opportunity Employer

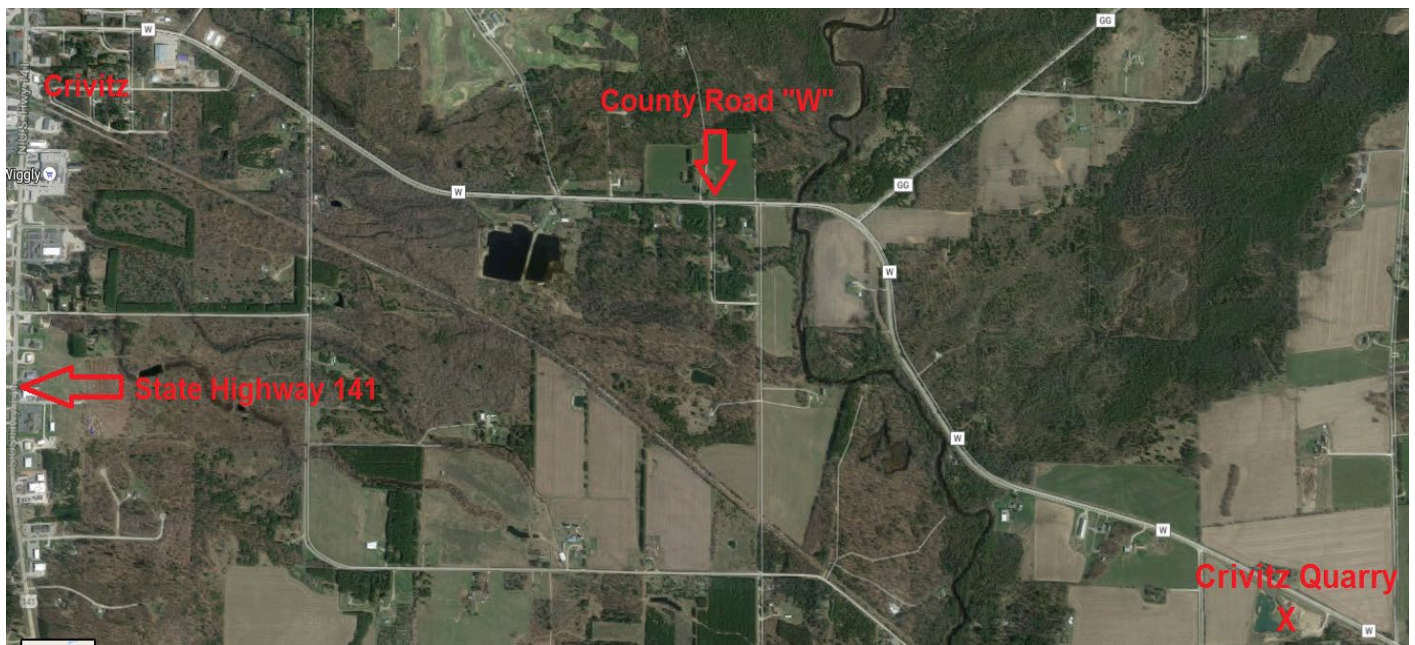
850	1 1/2" Mississippi River Stone	Tons
851	Big Round Stone	Tons
854	Top Soil	Yards
855	Pulverized Top Soil	Yards
856	Screened Top Soil	Yards
867	Peastone	Tons
868	3/4" Washed Stone	Tons
869	1 1/2" Washed Stone	Tons
880	Mulch - Red	Yards
882	Mulch - Natural Color	Yards

All Prices Are Per Ton (unless otherwise noted), FOB, and Do Not Include Tax.

All Prices Are Based on Full Load Quantities.

A Minimum charge of \$25.00 applies to all material loaded by Peters Concrete Co.

All Prices Are Subject to Change Without Notice.



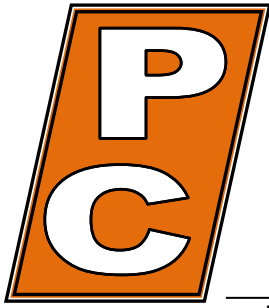
X Peters Site

Crivitz Area

<u>Site</u>	Crivitz Quarry
<u>ID #</u>	25756
<u>Address</u>	6985 County Road W
<u>Municipality</u>	Crivitz
<u>Zip</u>	54114

General Directions

East on County Rd W from 141/Crivitz 3.4 miles



PETERS CONCRETE COMPANY

Main Office / Plant

1516 Atkinson Drive
Green Bay, WI 54303
Phone (920) 494-3700
Fax (920) 494-5475

Marinette Plant

1604 W. Cleveland Ave.
Marinette, WI 54143
Phone 1-800-735-1505
Fax (715) 732-9028

Bonduel Plant

N3601 State Highway 47
Bonduel, WI 54107
Phone (715) 758-2363
Fax (715) 758-6362

www.petersconcrete.com

Ready Mixed Concrete · Excavation · Heavy & Highway · Sewer & Water · Crushing & Aggregates

Crivitz Area

Prices Effective February 1, 2025

<u>Code</u>	<u>Material</u>	<u>Crivitz Quarry</u> <u>25756</u>
831	3/4" Crushed Stone	\$6.75
832	1 1/4" Crushed Stone	\$6.75
819	Stone Dust	\$6.25
833	Breaker Run	\$6.50
825	3/4" Screened Stone	\$7.75
826	1 1/2" Screened Stone	\$7.75
828	3" Crushed Stone	\$6.75

All Prices Are Per Ton (unless otherwise noted), FOB, and Do Not Include Tax.

All Prices Are Based on Full Load Quantities.

A Minimum charge of \$25.00 applies to all material loaded by Peters Concrete Co.

All Prices Are Subject to Change Without Notice.



Porterfield Area

Site Peters Porterfield Quarry

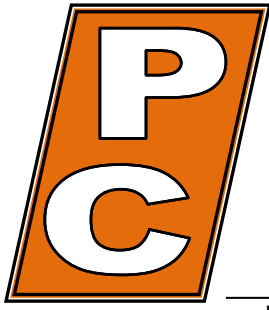
ID # 25732

Address County Road E

Municipality Porterfield **County:** Marinette

General Directions:

North on County Road E from Highway 64, 2.4 Miles, West side of road.



PETERS CONCRETE COMPANY

Main Office / Plant

1516 Atkinson Drive
Green Bay, WI 54303
Phone (920) 494-3700
Fax (920) 494-5475

Marinette Plant

1604 W. Cleveland Ave.
Marinette, WI 54143
Phone 1-800-735-1505
Fax (715) 732-9028

Bonduel Plant

N3601 State Highway 47
Bonduel, WI 54107
Phone (715) 758-2363
Fax (715) 758-6362

www.petersconcrete.com

Ready Mixed Concrete · Excavation · Heavy & Highway · Sewer & Water · Crushing & Aggregates

Porterfield Area

Prices Effective February 1, 2025

<u>Code</u>	<u>Material</u>	<u>Peters-Porterfield Quarry</u> <u>25732</u>
802	Clay Fill	\$4.00/Yard
831	3/4" Crushed Stone	\$8.75
832	1 1/4" Crushed Stone	\$8.75
819	Stone Dust	\$8.75
833	Breaker Run	\$8.50
825	3/4" Screened Stone	\$9.75
826	1 1/2" Screened Stone	\$9.75
827	3" Screened	\$9.75
828	3" Crushed Stone	\$8.75
838	Light Rip Rap	\$18.00
839	Med & Heavy Rip Rap	\$20.00
846	1 1/4" Recycled Concrete	\$7.00

All Prices Are Per Ton (unless otherwise noted), FOB, and Do Not Include Tax.

All Prices Are Based on Full Load Quantities.

A Minimum charge of \$25.00 applies to all material loaded by Peters Concrete Co.

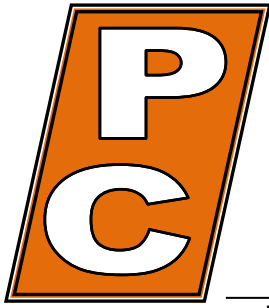
All Prices Are Subject to Change Without Notice.



X Peters Site

Marinette Area

<u>Site</u>	Marinette Plant
<u>ID #</u>	25704
<u>Address</u>	W1604 Cleveland Ave
<u>Municipality</u>	Marinette
<u>Zip</u>	54143
<u>General Directions:</u>	North on Roosevelt Road from 41; West on W. Cleveland Ave.



PETERS CONCRETE COMPANY

Main Office / Plant

1516 Atkinson Drive
Green Bay, WI 54303
Phone (920) 494-3700
Fax (920) 494-5475

Marinette Plant

1604 W. Cleveland Ave.
Marinette, WI 54143
Phone 1-800-735-1505
Fax (715) 732-9028

Bonduel Plant

N3601 State Highway 47
Bonduel, WI 54107
Phone (715) 758-2363
Fax (715) 758-6362

www.petersconcrete.com

Ready Mixed Concrete · Excavation · Heavy & Highway · Sewer & Water · Crushing & Aggregates

Marinette Area

Prices Effective February 1, 2025

<u>Code</u>	<u>Material</u>	<u>Marinette Plant/Plant 4</u> <u>25704</u>
803	Sand Fill	\$5.00/CY
808	Washed Sand	\$16.00
868	3/4" Washed Stone	\$14.00
869	1 1/2" Washed Stone	\$14.00
831	3/4" Crushed Stone	\$12.00
832	1 1/4" Crushed Stone	\$12.00
825	3/4" Screened Stone	\$13.00
826	1 1/2" Screened Stone	\$13.00
846	1 1/4" Recycled Concrete	\$8.00
	Concrete Blocks/Barriers	Call for price

All Prices Are Per Ton (unless otherwise noted), FOB, and Do Not Include Tax.

All Prices Are Based on Full Load Quantities.

A Minimum charge of \$25.00 applies to all material loaded by Peters Concrete Co.

All Prices Are Subject to Change Without Notice.



X Peters Site

Peshtigo Area

Site Peters-Peshtigo (Formerly Biundo) Quarry

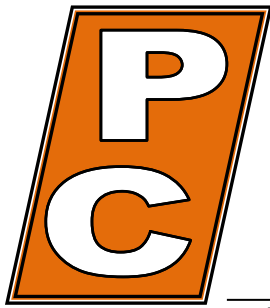
ID # 25737

Address Vernon Hills Drive

Municipality Peshtigo

Zip 54157

General Directions: West on County Rd M from 41, South on Vernon Hills Drive



PETERS CONCRETE COMPANY

Main Office / Plant

1516 Atkinson Drive
Green Bay, WI 54303
Phone (920) 494-3700
Fax (920) 494-5475

Marinette Plant

1604 W. Cleveland Ave.
Marinette, WI 54143
Phone 1-800-735-1505
Fax (715) 732-9028

Bonduel Plant

N3601 State Highway 47
Bonduel, WI 54107
Phone (715) 758-2363
Fax (715) 758-6362

www.petersconcrete.com

Ready Mixed Concrete · Excavation · Heavy & Highway · Sewer & Water · Crushing & Aggregates

Peshtigo Area

Prices Effective February 1, 2025

<u>Code</u>	<u>Material</u>	<u>Peters-Peshtigo Quarry</u> <u>25737</u>
802	Clay Fill	\$3.00/Yard
831	3/4" Crushed Stone	\$8.75
832	1 1/4" Crushed Stone	\$8.75
819	Stone Dust	\$8.75
833	Breaker Run	\$8.50
825	3/4" Screened Stone	\$9.75
826	1 1/2" Screened Stone	\$9.75
827	3" Screened	\$9.75
828	3" Crushed Stone	\$8.75
838	Light Rip Rap	\$18.00
839	Medium Rip Rap	\$20.00
840	Heavy Rip Rap	\$20.00
854	Top Soil	\$10.00/Yard

All Prices Are Per Ton (unless otherwise noted), FOB, and Do Not Include Tax.

All Prices Are Based on Full Load Quantities.

A Minimum charge of \$25.00 applies to all material loaded by Peters Concrete Co.

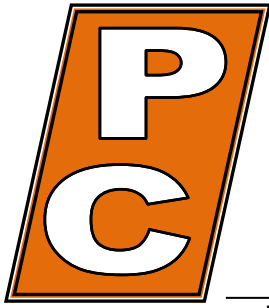
All Prices Are Subject to Change Without Notice.



X Peters Site

Coleman Area

<u>Site</u>	Peters-Coleman (Formerly Noll) Pit
<u>ID #</u>	25748
<u>Address</u>	3474 N. 9 th Road
<u>Municipality</u>	Coleman
<u>Zip</u>	54112
<u>General Directions</u>	East on E .Main/County Road "B" from 141; North on N. 9th Road



PETERS CONCRETE COMPANY

Main Office / Plant

1516 Atkinson Drive
Green Bay, WI 54303
Phone (920) 494-3700
Fax (920) 494-5475

Marinette Plant

1604 W. Cleveland Ave.
Marinette, WI 54143
Phone 1-800-735-1505
Fax (715) 732-9028

Bonduel Plant

N3601 State Highway 47
Bonduel, WI 54107
Phone (715) 758-2363
Fax (715) 758-6362

www.petersconcrete.com

Ready Mixed Concrete · Excavation · Heavy & Highway · Sewer & Water · Crushing & Aggregates

Coleman Area

Prices Effective February 1, 2025

<u>Code</u>	<u>Material</u>	<u>Peters-Coleman Pit</u> <u>25748</u>
803	Sand Fill	\$5.00/Yard
804	Pond Sand	\$3.00/Yard
808	Washed Sand	\$13.00
834	Pit Run	\$7.00
843	3/4" Crushed Gravel	\$8.00
844	1 1/4" Crushed Gravel	\$8.00
868	3/4" Washed Stone	\$10.00
869	1 1/2" Washed Stone	\$10.00

All Prices Are Per Ton (unless otherwise noted), FOB, and Do Not Include Tax.

All Prices Are Based on Full Load Quantities.

A Minimum charge of \$25.00 applies to all material loaded by Peters Concrete Co.

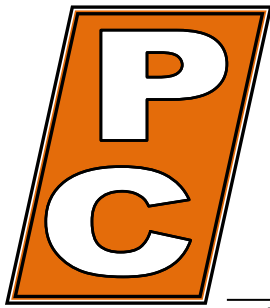
All Prices Are Subject to Change Without Notice.



X Peters Site

Oconto Area

<u>Site</u>	Caelwaerts Quarry
<u>ID #</u>	25750
<u>Address</u>	Maple Grove School Road
<u>Municipality</u>	Oconto
<u>Zip</u>	54153
<u>General Directions:</u>	East on Maple Grove School Road from 41



PETERS CONCRETE COMPANY

Main Office / Plant

1516 Atkinson Drive
Green Bay, WI 54303
Phone (920) 494-3700
Fax (920) 494-5475

Marinette Plant

1604 W. Cleveland Ave.
Marinette, WI 54143
Phone 1-800-735-1505
Fax (715) 732-9028

Bonduel Plant

N3601 State Highway 47
Bonduel, WI 54107
Phone (715) 758-2363
Fax (715) 758-6362

www.petersconcrete.com

Ready Mixed Concrete · Excavation · Heavy & Highway · Sewer & Water · Crushing & Aggregates

Oconto Area

Prices Effective February 1, 2025

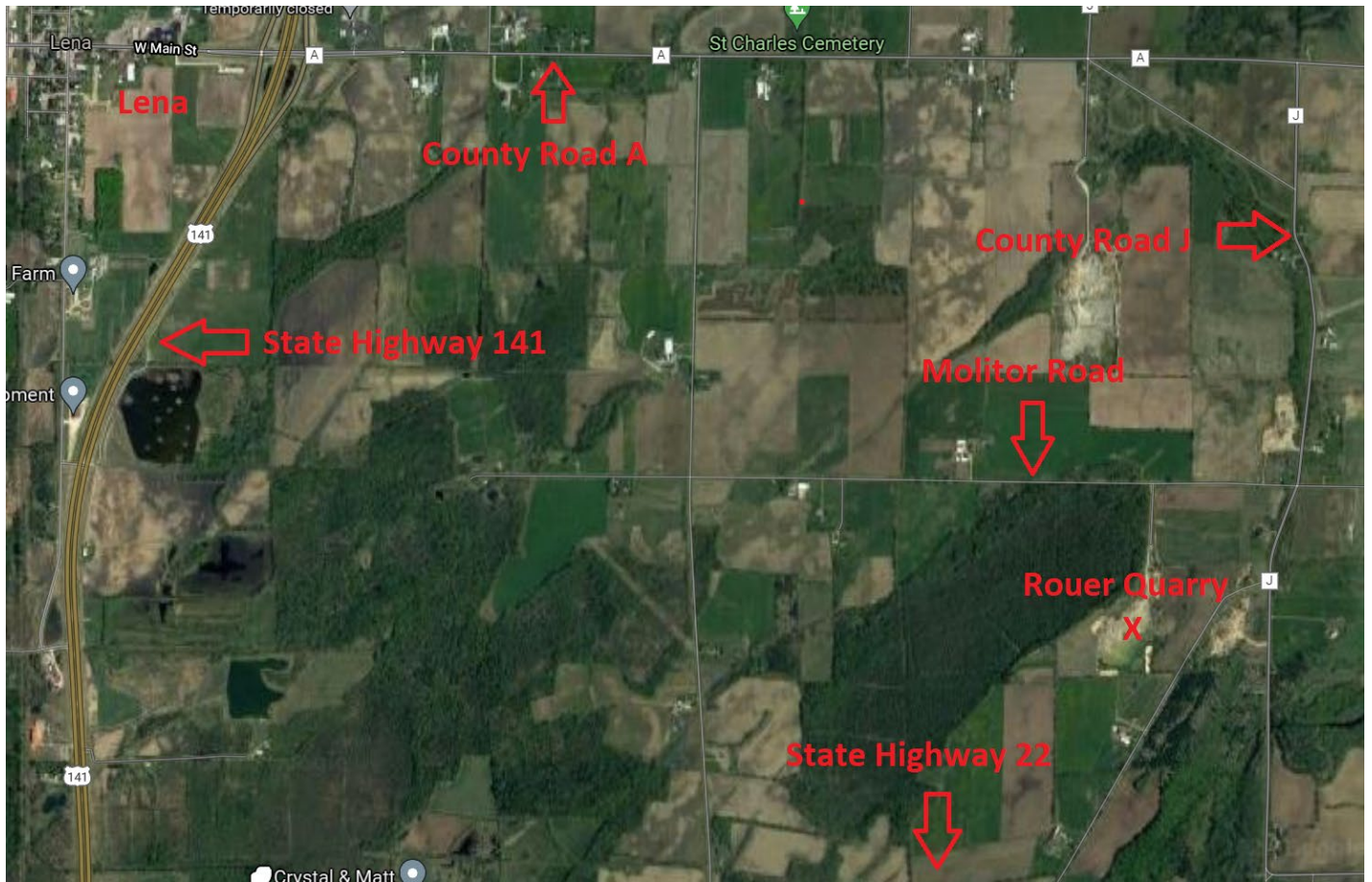
<u>Code</u>	<u>Material</u>	<u>Caelwaerts Quarry</u> <u>25750</u>
819	Stone Dust	\$8.50
825	3/4" Screened Stone	\$9.50
826	1 1/2" Screened Stone	\$9.50
827	3" Screened	\$9.50
828	3" Crushed Stone	\$8.50
831	3/4" Crushed Stone	\$8.50
832	1 1/4" Crushed Stone	\$8.50
833	Breaker Run	\$8.25
838	Light Rip Rap	\$18.00
839	Med & Heavy Rip Rap	\$20.00

All Prices Are Per Ton (unless otherwise noted), FOB, and Do Not Include Tax.

All Prices Are Based on Full Load Quantities.

A Minimum charge of \$25.00 applies to all material loaded by Peters Concrete Co.

All Prices Are Subject to Change Without Notice.



Lena Area

Site Rouer Quarry

ID # 25733

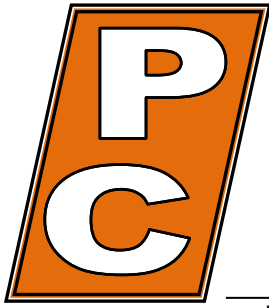
Address 4601 Molitor Road

Municipality Oconto

County: Oconto

Zip 54153

General Directions: Either east on County A from Highway 141; south on County J from County A; west on Molitor Road from County J; or North on J from State Highway 22; west from County J on Molitor Road.



PETERS CONCRETE COMPANY

Main Office / Plant

1516 Atkinson Drive
Green Bay, WI 54303
Phone (920) 494-3700
Fax (920) 494-5475

Marinette Plant

1604 W. Cleveland Ave.
Marinette, WI 54143
Phone 1-800-735-1505
Fax (715) 732-9028

Bonduel Plant

N3601 State Highway 47
Bonduel, WI 54107
Phone (715) 758-2363
Fax (715) 758-6362

www.petersconcrete.com

Ready Mixed Concrete · Excavation · Heavy & Highway · Sewer & Water · Crushing & Aggregates

Lena Area

Prices Effective February 1, 2025

<u>Code</u>	<u>Material</u>	<u>Rouer Quarry</u> <u>25733</u>
802	Clay Fill	\$4.00/Yard
831	3/4" Crushed Stone	\$8.00
832	1 1/4" Crushed Stone	\$8.00
819	Stone Dust	\$8.00
833	Breaker Run	\$7.75
825	3/4" Screened Stone	\$9.00
826	1 1/2" Screened Stone	\$9.00
827	3" Screened	\$9.00
828	3" Crushed Stone	\$8.00
838	Light Rip Rap	\$16.00

All Prices Are Per Ton (unless otherwise noted), FOB, and Do Not Include Tax.

All Prices Are Based on Full Load Quantities.

A Minimum charge of \$25.00 applies to all material loaded by Peters Concrete Co.

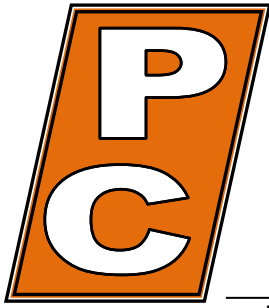
All Prices Are Subject to Change Without Notice.



Gillett Area

<u>Site</u>	Gillett Quarry	
<u>ID #</u>	25730	
<u>Address</u>	10326 Valley Line Road	
<u>Municipality</u>	Gillett	<u>County:</u> Oconto
<u>Zip</u>	54124	

General Directions: North on County G from Highway 32; west on Valley Line Road from County G; west on Valley Line Road from County G.



PETERS CONCRETE COMPANY

Main Office / Plant

1516 Atkinson Drive
Green Bay, WI 54303
Phone (920) 494-3700
Fax (920) 494-5475

Marinette Plant

1604 W. Cleveland Ave.
Marinette, WI 54143
Phone 1-800-735-1505
Fax (715) 732-9028

Bonduel Plant

N3601 State Highway 47
Bonduel, WI 54107
Phone (715) 758-2363
Fax (715) 758-6362

www.petersconcrete.com

Ready Mixed Concrete · Excavation · Heavy & Highway · Sewer & Water · Crushing & Aggregates

Lena Area

Prices Effective February 1, 2025

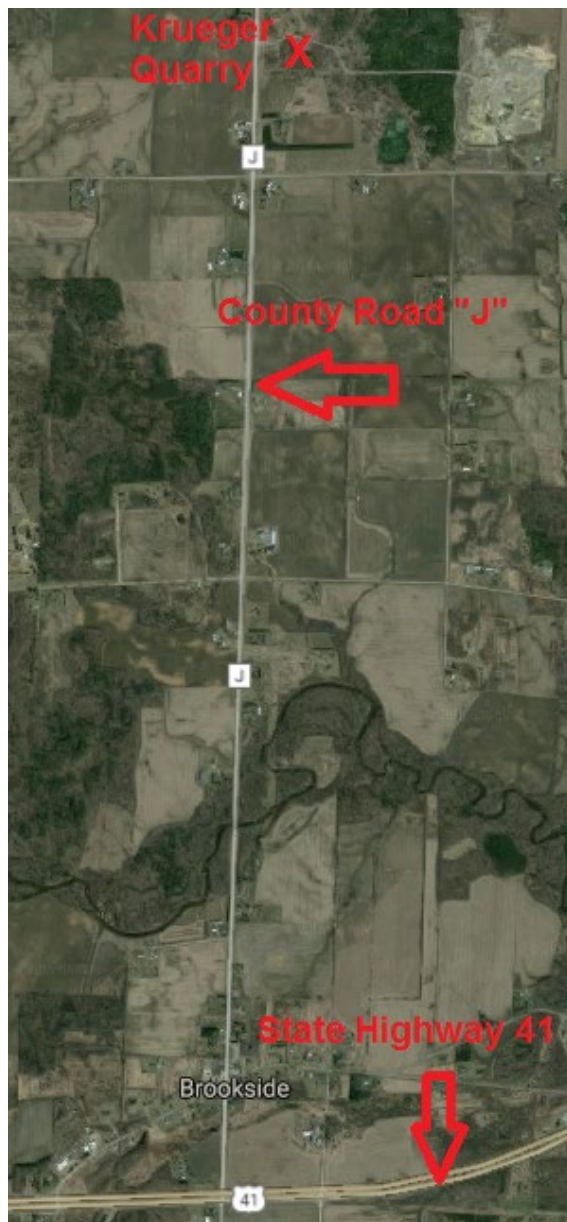
<u>Code</u>	<u>Material</u>	<u>Gillett Quarry</u> <u>25730</u>
831	3/4" Crushed Stone	\$8.00
832	1 1/4" Crushed Stone	\$8.00
819	Stone Dust	\$8.00
833	Breaker Run	\$7.75
825	3/4" Screened Stone	\$9.00
826	1 1/2" Screened Stone	\$9.00
827	3" Screened	\$9.00
828	3" Crushed Stone	\$8.00
838	Light Rip Rap	\$18.00
839	Medium Rip Rap	\$20.00
840	Heavy Rip Rap	\$20.00

All Prices Are Per Ton (unless otherwise noted), FOB, and Do Not Include Tax.

All Prices Are Based on Full Load Quantities.

A Minimum charge of \$25.00 applies to all material loaded by Peters Concrete Co.

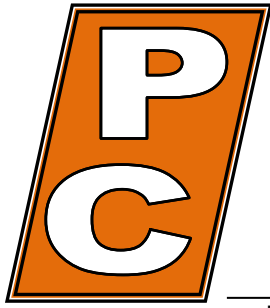
All Prices Are Subject to Change Without Notice.



X Peters Site

Abrams Area

<u>Site</u>	Krueger Quarry
<u>ID #</u>	25706
<u>Address</u>	4570 County Road J
<u>Municipality</u>	Oconto
<u>Zip</u>	54153
<u>General Directions:</u>	North on County Road "J" from 41



PETERS CONCRETE COMPANY

Main Office / Plant

1516 Atkinson Drive
Green Bay, WI 54303
Phone (920) 494-3700
Fax (920) 494-5475

Marinette Plant

1604 W. Cleveland Ave.
Marinette, WI 54143
Phone 1-800-735-1505
Fax (715) 732-9028

Bonduel Plant

N3601 State Highway 47
Bonduel, WI 54107
Phone (715) 758-2363
Fax (715) 758-6362

www.petersconcrete.com

Ready Mixed Concrete · Excavation · Heavy & Highway · Sewer & Water · Crushing & Aggregates

Oconto Area

Prices Effective February 1, 2025

<u>Code</u>	<u>Material</u>	<u>Krueger Quarry</u> <u>25706</u>
802	Clay Fill	\$4.00/Yard
854	Top Soil	\$10.00/ Yard
831	3/4" Crushed Stone	\$8.25
832	1 1/4" Crushed Stone	\$8.25
819	Stone Dust	\$8.25
830	Stone Chips	\$9.25
833	Breaker Run	\$8.00
825	3/4" Screened Stone	\$9.25
826	1 1/2" Screened Stone	\$9.25
827	3" Screened	\$9.25
828	3" Crushed Stone	\$8.25
838	Light Rip Rap	\$16.00
839	Medium Rip Rap	\$18.00
840	Heavy Rip Rap	\$18.00
846	3/4, 1 1/4, Breaker Run Recycled Concrete	\$7.00
845	Recycled Black Top	\$9.00

All Prices Are Per Ton (unless otherwise noted), FOB, and Do Not Include Tax.

All Prices Are Based on Full Load Quantities.

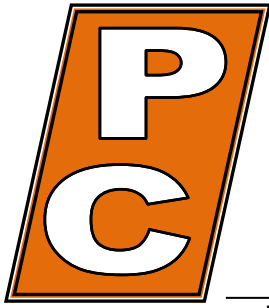
A Minimum charge of \$25.00 applies to all material loaded by Peters Concrete Co.

All Prices Are Subject to Change Without Notice.



Little Suamico Area

<u>Site</u>	Snyder Quarry	
<u>ID #</u>	25734	
<u>Address</u>	2826 County Road S	
<u>Municipality</u>	Little Suamico	<u>County:</u> Oconto
<u>Zip</u>	54141	
<u>General Directions:</u>	East on County Road "S" from 141/41	



PETERS CONCRETE COMPANY

Main Office / Plant

1516 Atkinson Drive
Green Bay, WI 54303
Phone (920) 494-3700
Fax (920) 494-5475

Marinette Plant

1604 W. Cleveland Ave.
Marinette, WI 54143
Phone 1-800-735-1505
Fax (715) 732-9028

Bonduel Plant

N3601 State Highway 47
Bonduel, WI 54107
Phone (715) 758-2363
Fax (715) 758-6362

www.petersconcrete.com

Ready Mixed Concrete · Excavation · Heavy & Highway · Sewer & Water · Crushing & Aggregates

Little Suamico Area

Prices Effective February 1, 2025

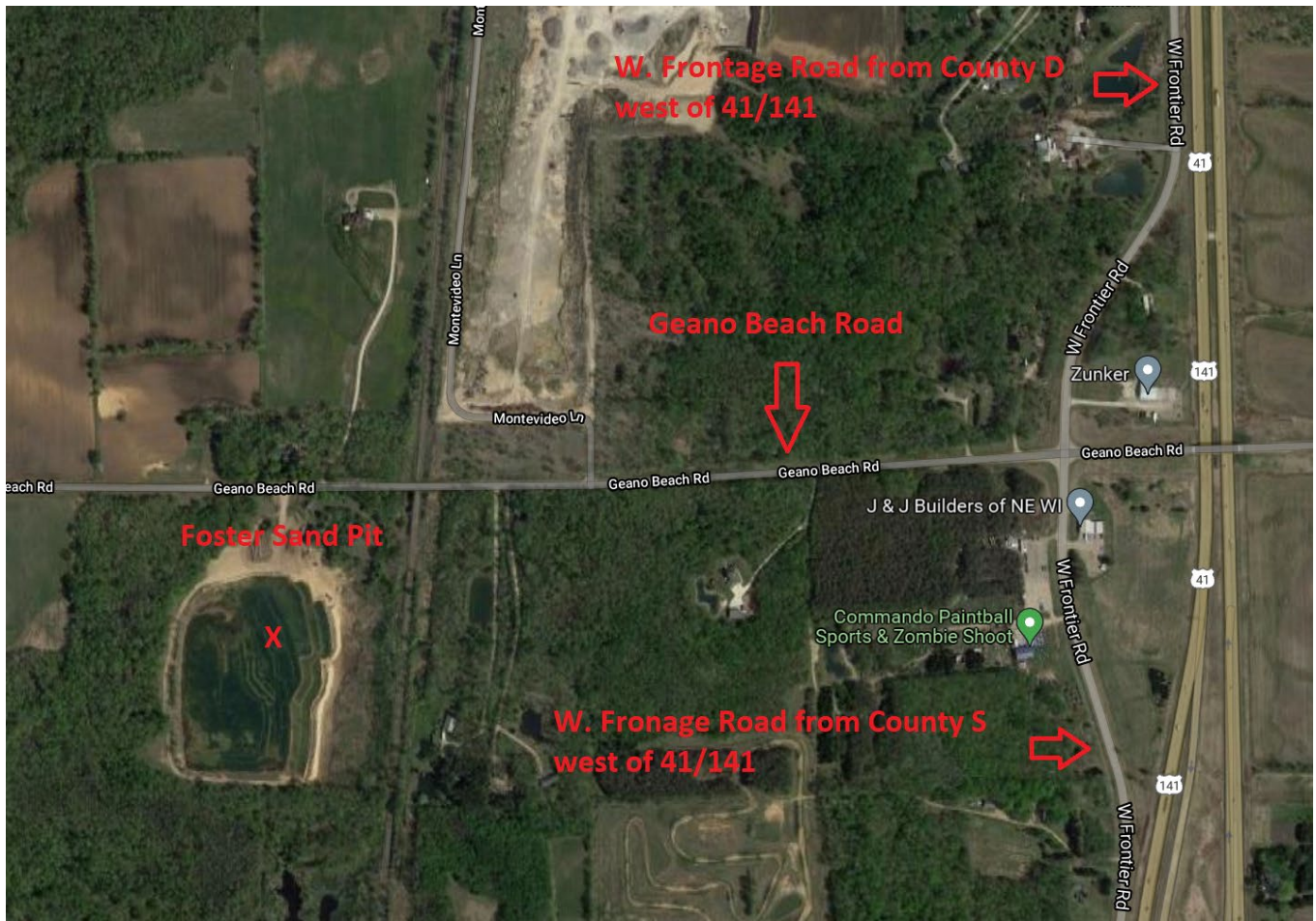
<u>Code</u>	<u>Material</u>	<u>Snyder Quarry</u> <u>25734</u>
831	3/4" Crushed Stone	\$8.25
832	1 1/4" Crushed Stone	\$8.25
819	Stone Dust	\$8.25
833	Breaker Run	\$8.00
825	3/4" Screened Stone	\$9.25
826	1 1/2" Screened Stone	\$9.25
827	3" Screened	\$9.25
828	3" Crushed Stone	\$8.25
838	Light Rip Rap	\$16.00
845	Black Top Recycled	\$9.00
846	Recycled Concrete	\$7.00

All Prices Are Per Ton (unless otherwise noted), FOB, and Do Not Include Tax.

All Prices Are Based on Full Load Quantities.

A Minimum charge of \$25.00 applies to all material loaded by Peters Concrete Co.

All Prices Are Subject to Change Without Notice.



Abrams Area

Site Foster Sand Pit

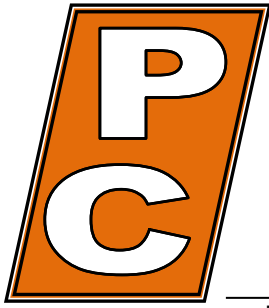
ID # 25729

Address 5997 Geano Beach Road

Municipality Abrams **County:** Oconto

Zip 54101

General Directions: Either South on W. Frontage Road on County D from 41/141 or North on W. Frontage Road on County S from 41/141, to Geano Beach Road, West on Geano Beach Road.



PETERS CONCRETE COMPANY

Main Office / Plant

1516 Atkinson Drive
Green Bay, WI 54303
Phone (920) 494-3700
Fax (920) 494-5475

Marinette Plant

1604 W. Cleveland Ave.
Marinette, WI 54143
Phone 1-800-735-1505
Fax (715) 732-9028

Bonduel Plant

N3601 State Highway 47
Bonduel, WI 54107
Phone (715) 758-2363
Fax (715) 758-6362

www.petersconcrete.com

Ready Mixed Concrete · Excavation · Heavy & Highway · Sewer & Water · Crushing & Aggregates

Abrams Area

Prices Effective February 1, 2025

<u>Code</u>	<u>Material</u>	<u>Foster Sand Pit</u> <u>25729</u>
803	Fill Sand	\$5.00/Yard
854	Top Soil	\$12.00/Yard

All Prices Are Per Ton (unless otherwise noted), FOB, and Do Not Include Tax.

All Prices Are Based on Full Load Quantities.

A Minimum charge of \$25.00 applies to all material loaded by Peters Concrete Co.

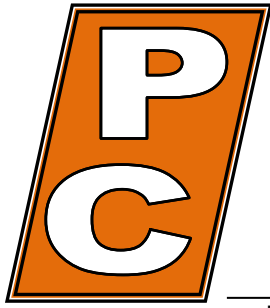
All Prices Are Subject to Change Without Notice.



X Peters Site

Pulaski – Abrams - Suamico Area

<u>Site</u>	Gohr Road Quarry
<u>ID #</u>	25793
<u>Address</u>	8658 Gohr Road
<u>Municipality</u>	Krakov
<u>Zip</u>	55137
<u>General Directions</u>	West on County Road S from Highways 41/141; North on County Road C; West on Gohr Road.



PETERS CONCRETE COMPANY

Main Office / Plant

1516 Atkinson Drive
Green Bay, WI 54303
Phone (920) 494-3700
Fax (920) 494-5475

Marinette Plant

1604 W. Cleveland Ave.
Marinette, WI 54143
Phone 1-800-735-1505
Fax (715) 732-9028

Bonduel Plant

N3601 State Highway 47
Bonduel, WI 54107
Phone (715) 758-2363
Fax (715) 758-6362

www.petersconcrete.com

Ready Mixed Concrete · Excavation · Heavy & Highway · Sewer & Water · Crushing & Aggregates

Pulaski – Abrams - Suamico Area

Prices Effective February 1, 2025

<u>Code</u>	<u>Material</u>	<u>Gohr Quarry</u> <u>25793</u>
802	Clay Fill	\$4.00/Yard
854	Top Soil	\$10.00/ Yard
831	3/4" Crushed Stone	\$8.25
832	1 1/4" Crushed Stone	\$8.25
819	Stone Dust	\$8.25
830	Stone Chips	\$9.25
833	Breaker Run	\$8.00
825	3/4" Screened Stone	\$9.25
826	1 1/2" Screened Stone	\$9.25
827	3" Screened	\$9.25
828	3" Crushed Stone	\$8.25

All Prices Are Per Ton (unless otherwise noted), FOB, and Do Not Include Tax.

All Prices Are Based on Full Load Quantities.

A Minimum charge of \$25.00 applies to all material loaded by Peters Concrete Co.

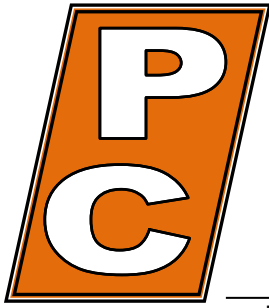
All Prices Are Subject to Change Without Notice.



X Peters Site

Pulaski - Suamico Area

<u>Site</u>	Chase Quarry
<u>ID #</u>	25705
<u>Address</u>	1321 Yurek Road
<u>Municipality</u>	Pulaski
<u>Zip</u>	54162
<u>General Directions</u>	West on County Road "S" from 41/141; North on Yurek Road



PETERS CONCRETE COMPANY

Main Office / Plant

1516 Atkinson Drive
Green Bay, WI 54303
Phone (920) 494-3700
Fax (920) 494-5475

Marinette Plant

1604 W. Cleveland Ave.
Marinette, WI 54143
Phone 1-800-735-1505
Fax (715) 732-9028

Bonduel Plant

N3601 State Highway 47
Bonduel, WI 54107
Phone (715) 758-2363
Fax (715) 758-6362

www.petersconcrete.com

Ready Mixed Concrete · Excavation · Heavy & Highway · Sewer & Water · Crushing & Aggregates

Pulaski - Suamico Area

Prices Effective February 1, 2025

<u>Code</u>	<u>Material</u>	<u>Chase Quarry</u> <u>25705</u>
802	Clay Fill	\$4.00/Yard
854	Top Soil	\$10.00/ Yard
831	3/4" Crushed Stone	\$8.25
832	1 1/4" Crushed Stone	\$8.25
819	Stone Dust	\$8.25
830	Stone Chips	\$9.25
833	Breaker Run	\$8.00
825	3/4" Screened Stone	\$9.25
826	1 1/2" Screened Stone	\$9.25
827	3" Screened	\$9.25
828	3" Crushed Stone	\$8.25
845	Black Top Recycled	\$9.00
846	Recycled Concrete	\$7.00

All Prices Are Per Ton (unless otherwise noted), FOB, and Do Not Include Tax.

All Prices Are Based on Full Load Quantities.

A Minimum charge of \$25.00 applies to all material loaded by Peters Concrete Co.

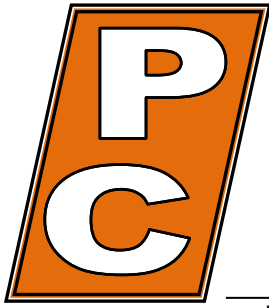
All Prices Are Subject to Change Without Notice.



X Peters Site

Bonduel Area

<u>Site</u>	Bonduel Concrete/Wash Plant 5/Przybylski Pit
<u>ID #</u>	25710
<u>Address</u>	N3601 State Highway 47
<u>Municipality</u>	Bonduel
<u>Zip</u>	54107
<u>General Directions</u>	South on State Highway 14 from 29



PETERS CONCRETE COMPANY

Main Office / Plant

1516 Atkinson Drive
Green Bay, WI 54303
Phone (920) 494-3700
Fax (920) 494-5475

Marinette Plant

1604 W. Cleveland Ave.
Marinette, WI 54143
Phone 1-800-735-1505
Fax (715) 732-9028

Bonduel Plant

N3601 State Highway 47
Bonduel, WI 54107
Phone (715) 758-2363
Fax (715) 758-6362

www.petersconcrete.com

Ready Mixed Concrete · Excavation · Heavy & Highway · Sewer & Water · Crushing & Aggregates

Bonduel Area

Prices Effective February 1, 2025

<u>Code</u>	<u>Material</u>	<u>Bonduel Wash Plant/Plant 5/Przybylski Pit</u> <u>25710</u>
804	Pond Sand	\$3.00/Yard
808	Washed Sand	\$15.00
834	Pit Run	\$7.00
868	3/4" Washed Stone	\$10.00
869	1 1/2" Washed Stone	\$10.00
867	Pea Stone	\$10.00
849	3/4" Mississippi River Rock	\$50.00
850	1 1/2" Mississippi River Rock	\$50.00
854	Top Soil	\$16.00/Yard
855	Pulverized Top Soil	\$25.00/Yard
831	3/4" Crushed Stone	\$13.00
832	1 1/4" Crushed Stone	\$13.00
828	3" Crushed Stone	\$13.00
830	Stone Dust	\$13.00
825	3/4" Screened Stone	\$14.00
826	1 1/2" Screened Stone	\$14.00
843	3/4" Crushed Gravel	\$8.00
844	1 1/4" Crushed Gravel	\$8.00
846	1 1/4" Recycled Concrete	\$7.00/Ton
845	Recycled Asphalt	\$9.00/Ton
880	Red Mulch	\$40.00/Yard
881	Dark Brown Mulch	\$40.00/Yard
882	Natural Color Mulch	\$40.00/Yard
	Concrete Blocks/Barriers	Call for price

All Prices Are Per Ton (unless otherwise noted), FOB, and Do Not Include Tax.

All Prices Are Based on Full Load Quantities.

A Minimum charge of \$25.00 applies to all material loaded by Peters Concrete Co.

All Prices Are Subject to Change Without Notice.



X Peters Site

Green Bay Area

Sites

Yard/Wash Plant #8

ID

25708

Address

1516 Atkinson Drive

Municipality

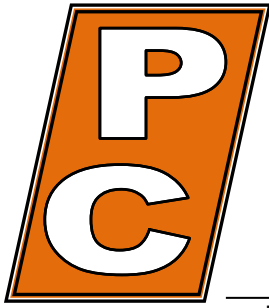
Green Bay

Zip

54303

General Directions

North on Atkinson Drive off Highway I-43 in Green Bay



PETERS CONCRETE COMPANY

Main Office / Plant

1516 Atkinson Drive
Green Bay, WI 54303
Phone (920) 494-3700
Fax (920) 494-5475

Marinette Plant

1604 W. Cleveland Ave.
Marinette, WI 54143
Phone 1-800-735-1505
Fax (715) 732-9028

Bonduel Plant

N3601 State Highway 47
Bonduel, WI 54107
Phone (715) 758-2363
Fax (715) 758-6362

www.petersconcrete.com

Ready Mixed Concrete · Excavation · Heavy & Highway · Sewer & Water · Crushing & Aggregates

Green Bay Area

Prices Effective February 1, 2025

<u>Code</u>	<u>Material</u>	<u>Yard/Wash Plant 8</u> <u>25708</u>
802	Clay Fill	\$5.00/Yard
803	Fill Sand	\$6.00/Yard
809	Pond Sand	\$4.00/Yard
808	Washed Sand	\$16.00
810	Mason Sand	\$18.00
868	3/4" Washed Stone	\$14.00
869	1 1/2" Washed Stone	\$14.00
867	Pea Stone	\$14.00
854	Top Soil	\$16.00/Yard
855	Pulverized Top Soil	\$25.00/Yard
831	3/4" Crushed Stone	\$14.00
832	1 1/4" Crushed Stone	\$14.00
819	Stone Dust	\$14.00
833	Breaker Run	\$14.00
825	3/4" Screened Stone	\$15.00
826	1 1/2" Screened Stone	\$15.00
827	3" Screened	\$15.00
838	Rip Rap - Light	\$24.00
839	Rip Rap – Medium	\$26.00
840	Rip Rap – Heavy/Large	\$26.00
843	3/4" Crushed Gravel	\$13.50
844	1 1/4" Crushed Gravel	\$13.50
846	1 1/4" Recycled Concrete	\$8.00
845	Recycled Asphalt	\$9.00
	Concrete Blocks/Barriers	Call for price

All Prices Are Per Ton (unless otherwise noted), FOB, and Do Not Include Tax.

All Prices Are Based on Full Load Quantities.

A Minimum charge of \$25.00 applies to all material loaded by Peters Concrete Co.

All Prices Are Subject to Change Without Notice.



X Peters Site

Brussels Area

Sites

Brussels Pit

ID #

25786

Address

County Road Y

Municipality

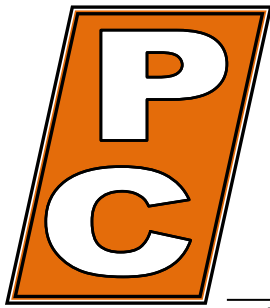
Brussels

Zip

54204

General Directions

South on County Road Y from State Highway 57



PETERS CONCRETE COMPANY

Main Office / Plant

1516 Atkinson Drive
Green Bay, WI 54303
Phone (920) 494-3700
Fax (920) 494-5475

Marinette Plant

1604 W. Cleveland Ave.
Marinette, WI 54143
Phone 1-800-735-1505
Fax (715) 732-9028

Bonduel Plant

N3601 State Highway 47
Bonduel, WI 54107
Phone (715) 758-2363
Fax (715) 758-6362

www.petersconcrete.com

Ready Mixed Concrete · Excavation · Heavy & Highway · Sewer & Water · Crushing & Aggregates

Brussels Area

Prices Effective February 1, 2025

<u>Code</u>	<u>Material</u>	<u>Brussels Pit</u> <u>25786</u>
803	Fill Sand	\$5.50/Yard
868	3/4" Washed Stone	\$9.00
869	1 1/2" Washed Stone	\$9.00
867	Pea Stone	\$9.00
843	3/4" Crushed Gravel	\$8.00
844	1 1/4" Crushed Gravel	\$8.00
846	1 1/4" Recycled Concrete	\$8.00

All Prices Are Per Ton (unless otherwise noted), FOB, and Do Not Include Tax.

All Prices Are Based on Full Load Quantities.

A Minimum charge of \$25.00 applies to all material loaded by Peters Concrete Co.

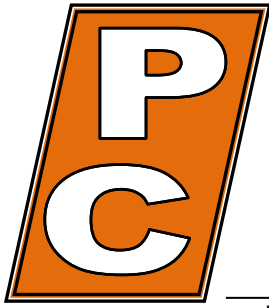
All Prices Are Subject to Change Without Notice.



X Peters Site

Maribel Area

<u>Site</u>	Cooperstown Pit
<u>ID #</u>	25785
<u>Address</u>	County Road NN
<u>Municipality</u>	Maribel
<u>Zip</u>	54227
<u>General Directions</u>	West on State Highway 96 from Highway I-43; South on County Road NN.



PETERS CONCRETE COMPANY

Main Office / Plant

1516 Atkinson Drive
Green Bay, WI 54303
Phone (920) 494-3700
Fax (920) 494-5475

Marinette Plant

1604 W. Cleveland Ave.
Marinette, WI 54143
Phone 1-800-735-1505
Fax (715) 732-9028

Bonduel Plant

N3601 State Highway 47
Bonduel, WI 54107
Phone (715) 758-2363
Fax (715) 758-6362

www.petersconcrete.com

Ready Mixed Concrete · Excavation · Heavy & Highway · Sewer & Water · Crushing & Aggregates

Maribel Area

Prices Effective February 1, 2025

<u>Code</u>	<u>Material</u>	<u>Cooperstown Pit</u> <u>25785</u>
803	Fill Sand	\$5.00/Yard
834	Pit Run	\$7.00
843	3/4" Crushed Gravel	\$8.00
844	1 1/4" Crushed Gravel	\$8.00
846	1 1/4" Recycled Concrete	\$7.00

All Prices Are Per Ton (unless otherwise noted), FOB, and Do Not Include Tax.

All Prices Are Based on Full Load Quantities.

A Minimum charge of \$25.00 applies to all material loaded by Peters Concrete Co.

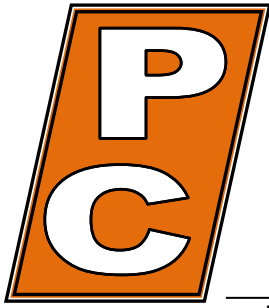
All Prices Are Subject to Change Without Notice.



X Peters Site

Appleton Area

<u>Site</u>	Deerview Yard
<u>ID #</u>	25762
<u>Address</u>	W. Deerview Drive
<u>Municipality</u>	Appleton
<u>Zip</u>	54913
<u>General Directions</u>	North (about 2 miles) on State Highway 47/N. Richmond Street from State Highway 41; West on W. Deerview Drive.



PETERS CONCRETE COMPANY

Main Office / Plant

1516 Atkinson Drive
Green Bay, WI 54303
Phone (920) 494-3700
Fax (920) 494-5475

Marinette Plant

1604 W. Cleveland Ave.
Marinette, WI 54143
Phone 1-800-735-1505
Fax (715) 732-9028

Bonduel Plant

N3601 State Highway 47
Bonduel, WI 54107
Phone (715) 758-2363
Fax (715) 758-6362

www.petersconcrete.com

Ready Mixed Concrete · Excavation · Heavy & Highway · Sewer & Water · Crushing & Aggregates

Appleton Area

Prices Effective February 1, 2025

<u>Code</u>	<u>Material</u>	<u>Deerview Yard</u> <u>25762</u>
846	1 1/4" Recycled Concrete	\$8.00
845	Recycled Asphalt	\$9.00

All Prices Are Per Ton (unless otherwise noted), FOB, and Do Not Include Tax.

All Prices Are Based on Full Load Quantities.

A Minimum charge of \$25.00 applies to all material loaded by Peters Concrete Co.

All Prices Are Subject to Change Without Notice.