

# ***PETERS CONCRETE CO.***

**GREEN BAY, MARINETTE & BONDUEL**

**920 – 494 – 3700**

**Crushing and Aggregate; Excavation - Heavy and Highway; Sewer and Water  
Ready Mix Concrete**

## **2023**

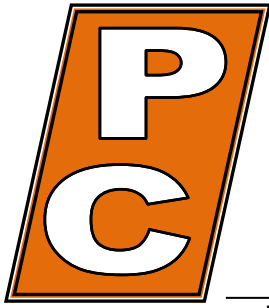
## **Material Prices**

**Prices Effective**

**February 1, 2023**

**[www.petersconcrete.com](http://www.petersconcrete.com)**

**An Equal Opportunity Employer**



# **PETERS CONCRETE COMPANY**

**Main Office / Plant**

1516 Atkinson Drive  
Green Bay, WI 54303  
Phone (920) 494-3700  
Fax (920) 494-5475

**Marinette Plant**

1604 W. Cleveland Ave.  
Marinette, WI 54143  
Phone 1-800-735-1505  
Fax (715) 732-9028

**Bonduel Plant**

N3601 State Highway 47  
Bonduel, WI 54107  
Phone (715) 758-2363  
Fax (715) 758-6362

**[www.petersconcrete.com](http://www.petersconcrete.com)**

---

Ready Mixed Concrete · Excavation · Heavy & Highway · Sewer & Water · Crushing & Aggregates

---

February 1, 2023

To: Peters Concrete Company Customers

Re: 2023 Material Prices

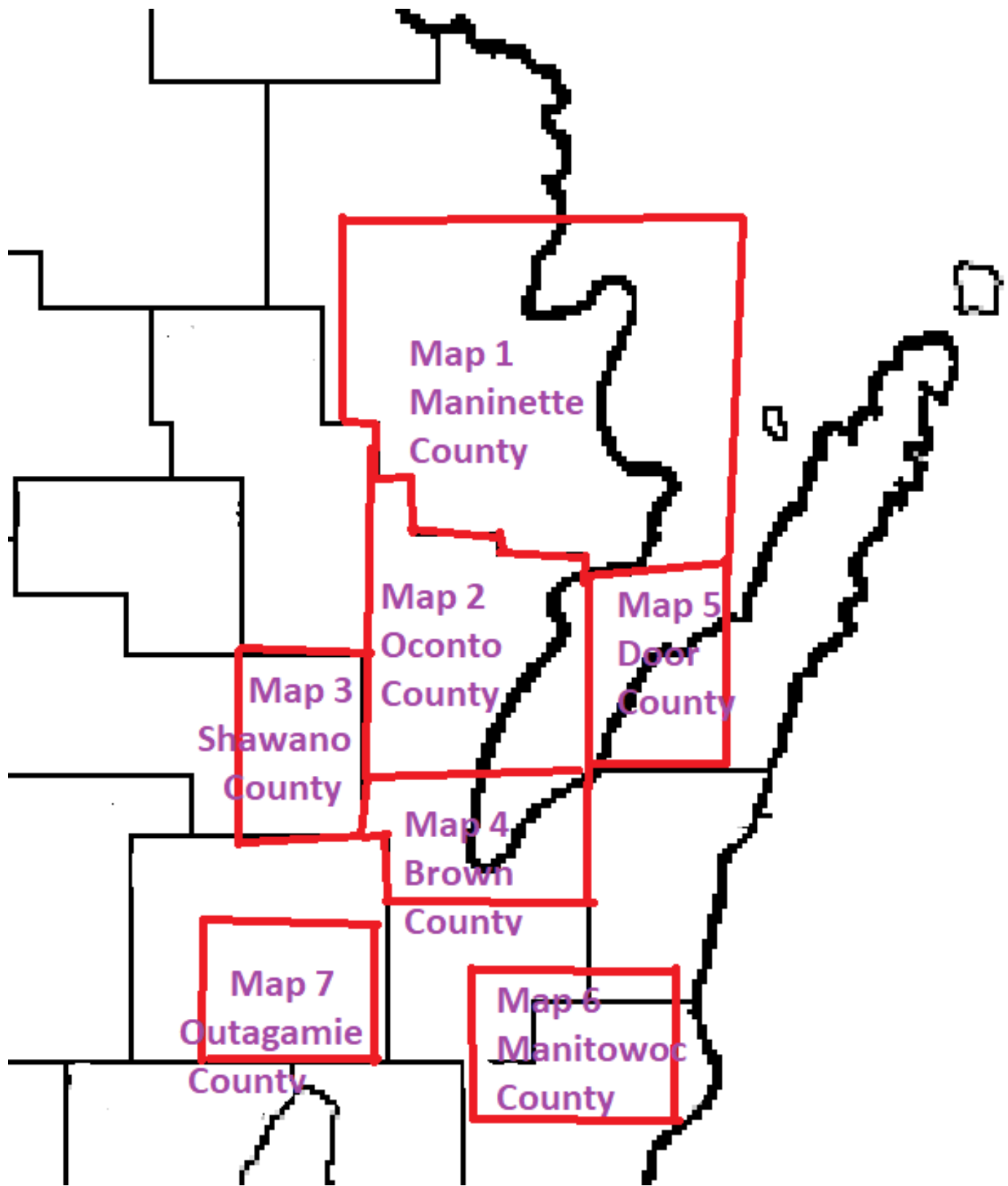
Dear Customers:

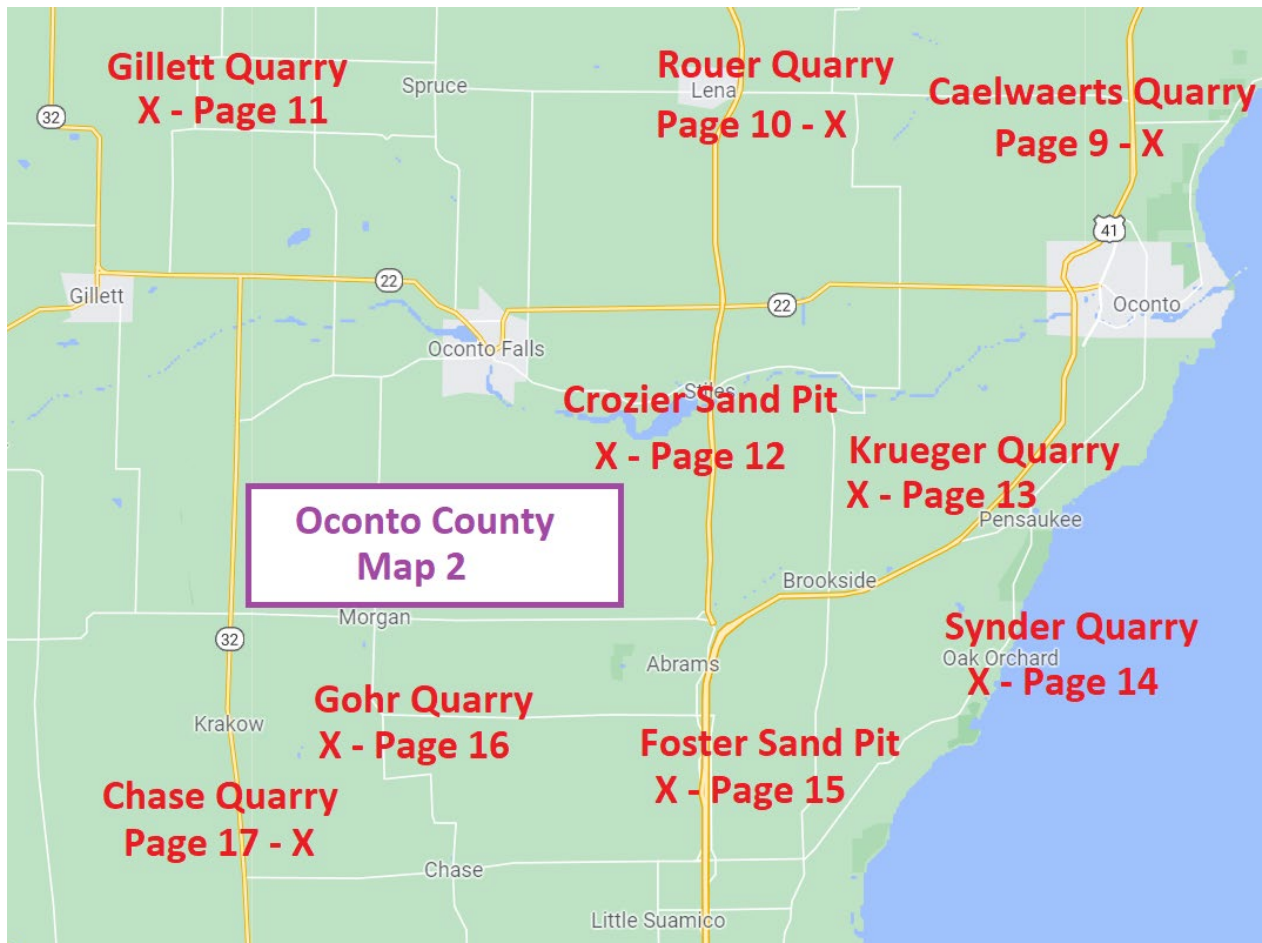
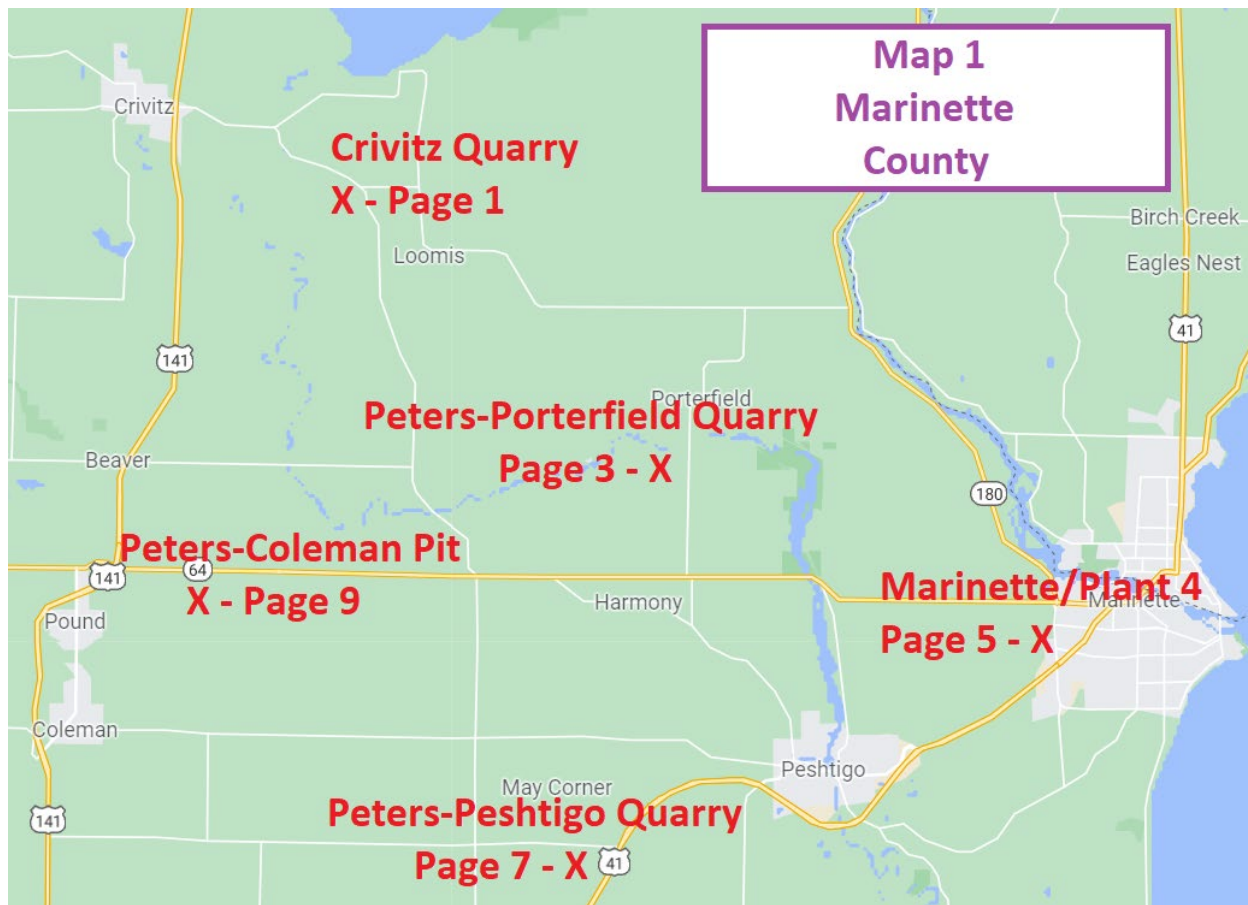
Peters Concrete Company is pleased to provide the enclosed price list for the 2023 construction season. The listed prices will be effective February 1, 2023. Included are maps showing locations of our quarries and pits and a list of additional sites and their locations that Peters Concrete Company sells materials out of. If pricing is not shown for a location that you are interested in, please call and we will be happy to provide a quote from the closest quarry or pit.

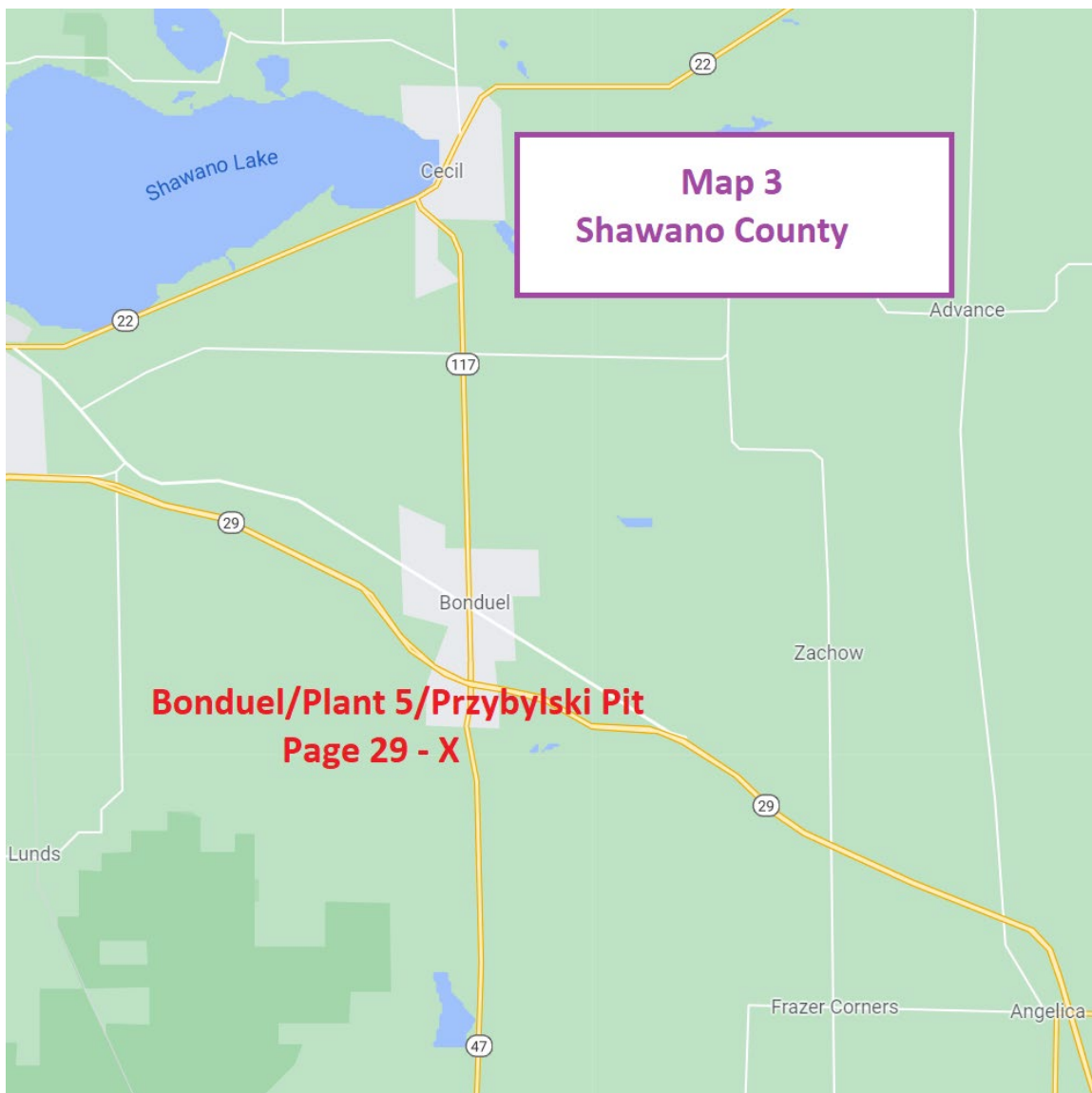
If you need a quote on material, need a large amount of material or further information, please call 920-494-3700.

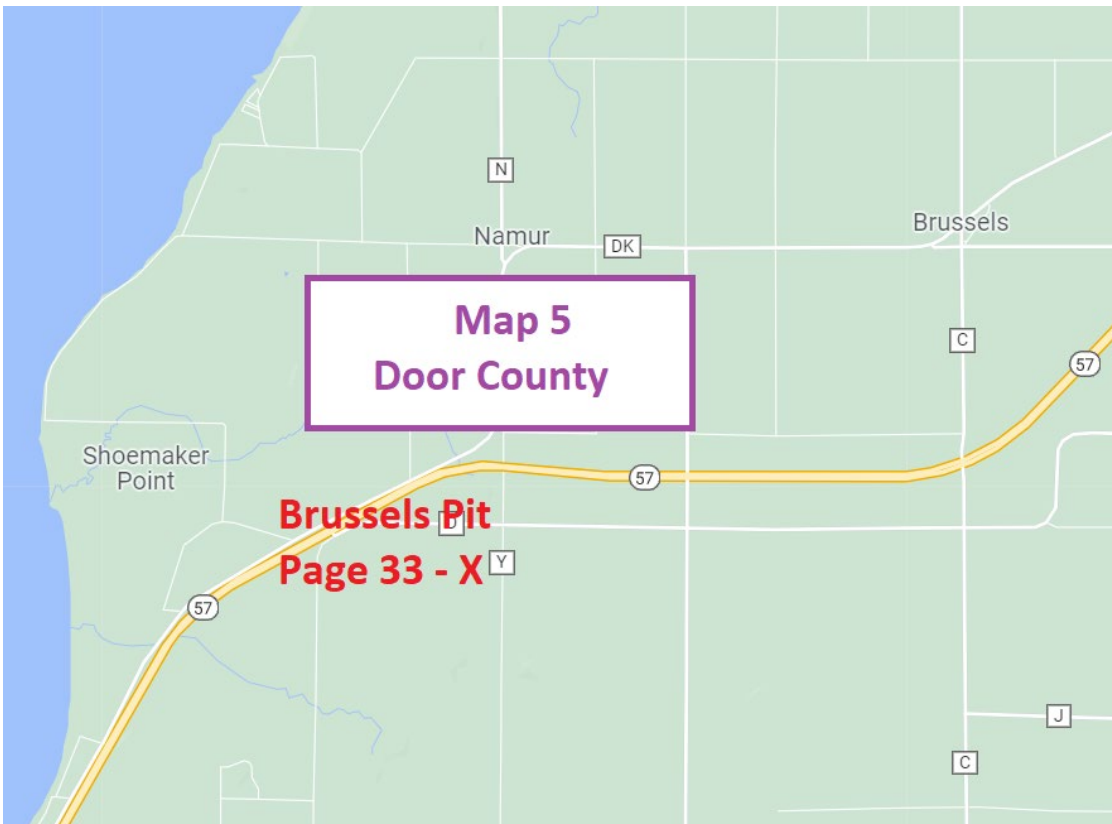
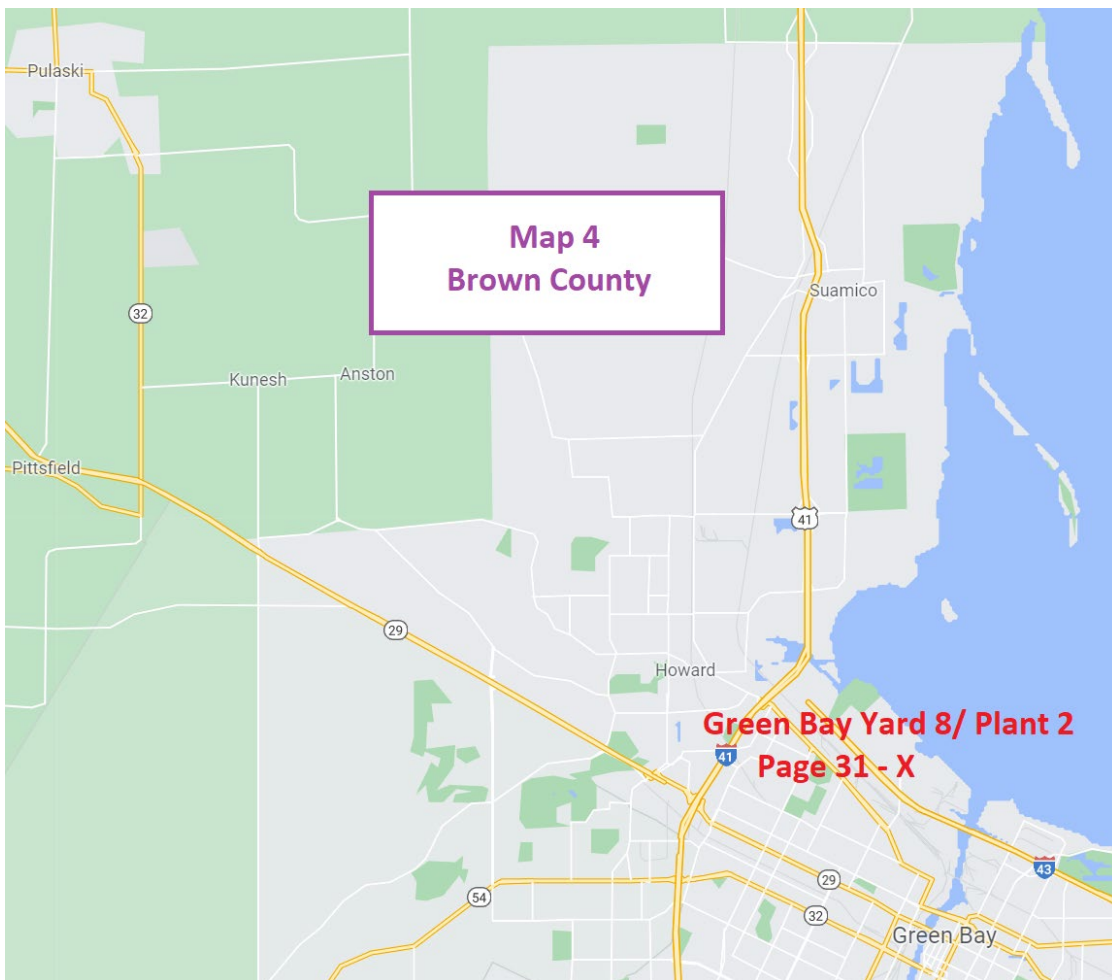
Have a great 2023 construction season.

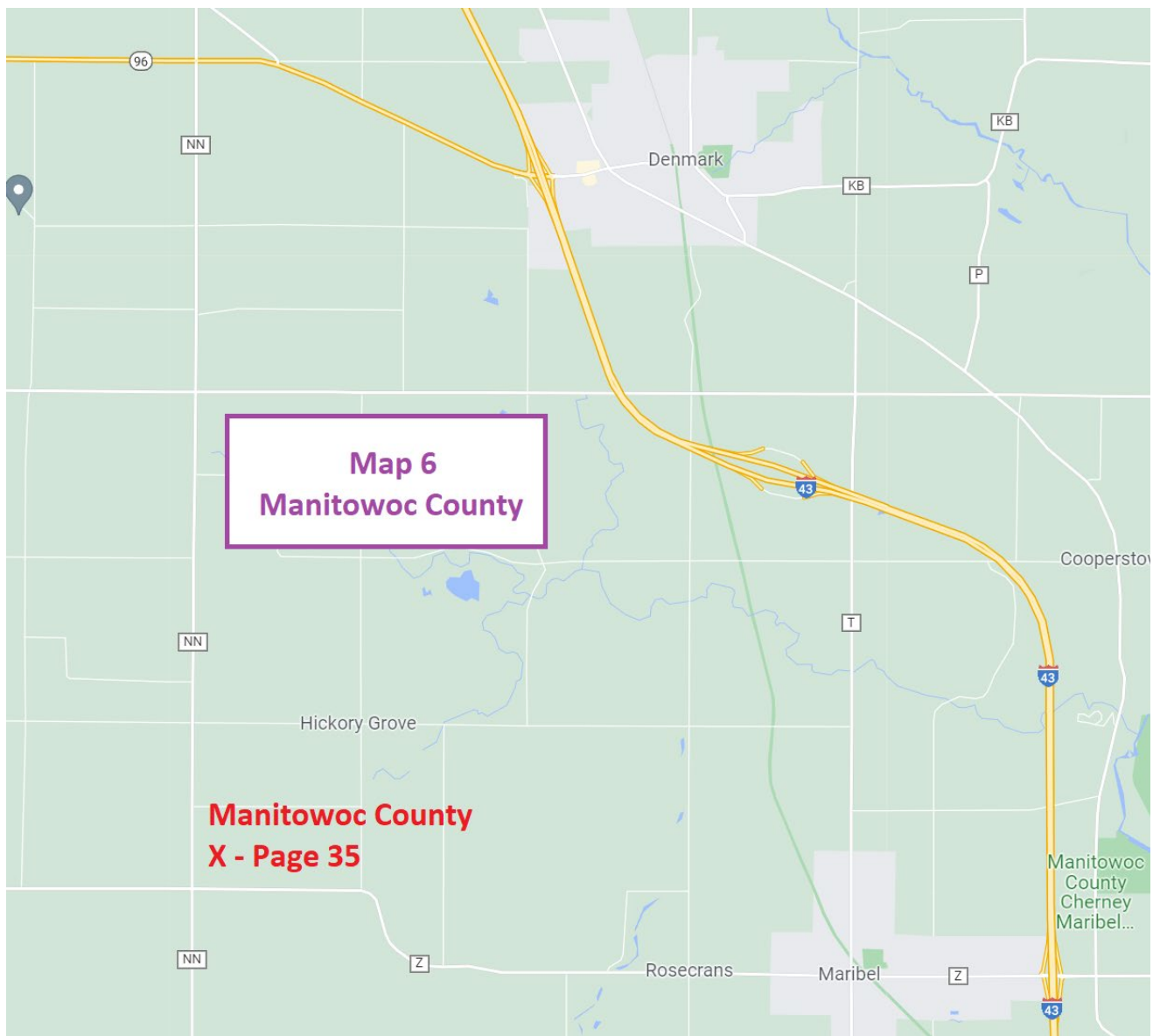
Sincerely,  
Peters Concrete Company













**Deerview Yard**  
**Page 37 - X**





## PAGE INDEX

Porterfield Pit	Site No.	Price Page	Map Page
Crivitz Quarry	23756	2	1
Porterfield Pit	23753	4	3
Marinette/Plant 4	23704	6	5
Peters-Peshtigo (Formerly Biundo) Quarry	23737	8	7
Peters-Coleman (Formerly Noll) Pit	23748	10	9
Caelwaerts Quarry	23750	12	11
Rouer Quarry	23733	14	13
Gillett Quarry	23730	16	15
Croizer Sand Pit	22736	18	17
Krueger Quarry	23706	20	19
Snyder Quarry	23734	22	21
Foster Sand Pit	23729	24	23
Gohr Quarry	23793	26	25
Chase Quarry	23705	28	27
Bonduel/Wash Plant 5/Przybylski Pit	23710	30	29
Wash Plant/Yard 8	23708	32	31
Green Bay/Plant 2	23702	32	31
Brussels Pit	23786	34	33
Cooperstown Pit	23785	36	35
Deerview Yard	23762	38	37

List of Quarries/Pits



# PETERS CONCRETE COMPANY

**Main Office / Plant**

1516 Atkinson Drive  
Green Bay, WI 54303  
Phone (920) 494-3700  
Fax (920) 494-5475

**Marinette Plant**

1604 W. Cleveland Ave.  
Marinette, WI 54143  
Phone 1-800-735-1505  
Fax (715) 732-9028

**Bonduel Plant**

N3601 State Highway 47  
Bonduel, WI 54107  
Phone (715) 758-2363  
Fax (715) 758-6362

[www.petersconcrete.com](http://www.petersconcrete.com)

Ready Mixed Concrete • Excavation • Heavy & Highway • Sewer & Water • Crushing & Aggregates

## Material List

<u>Code</u>	<u>Material</u>	<u>Unit</u>
802	Clay Fill	Yards
803	Sand Fill	Yards
804	Fill	Yards
808	Washed Sand	Tons
809	Pond Sand	Yards
810	Mason Sand (tons)	Tons
811	Screened Sand	Tons
817	Backfill	Yards
818	Backfill, Granular	Yards
819	Backfill, Structural	Yards
820	Backfill, MSE Wall	Yards
824	5/8" Screened (Stone Chips)	Tons
825	3/4" Screened Stone	Tons
826	1 1/2" Screened Stone	Tons
827	3" Screened	Tons
828	3" Crushed Stone	Tons
830	3/8" Stone/Crusher Dust	Tons
831	3/4" Crushed Stone	Tons
832	1 1/4" Crushed stone	Tons
833	Break Run	Tons
834	Pit Run	Tons
837	Rip Rap	Tons
838	Rip Rap - Light	Tons
839	Rip Rap - Medium	Tons
840	Rip Rap - Heavy/Large	Tons
841	Shot Stone	Tons
842	Flag Stone	Tons
843	3/4" Crushed Gravel	Tons
844	1 1/4" Crushed Gravel	Tons
845	Recycled Asphalt	Tons
846	1 1/4" Recycled Concrete	Tons
849	3/4" Mississippi River Stone	Tons

An Equal Opportunity Employer

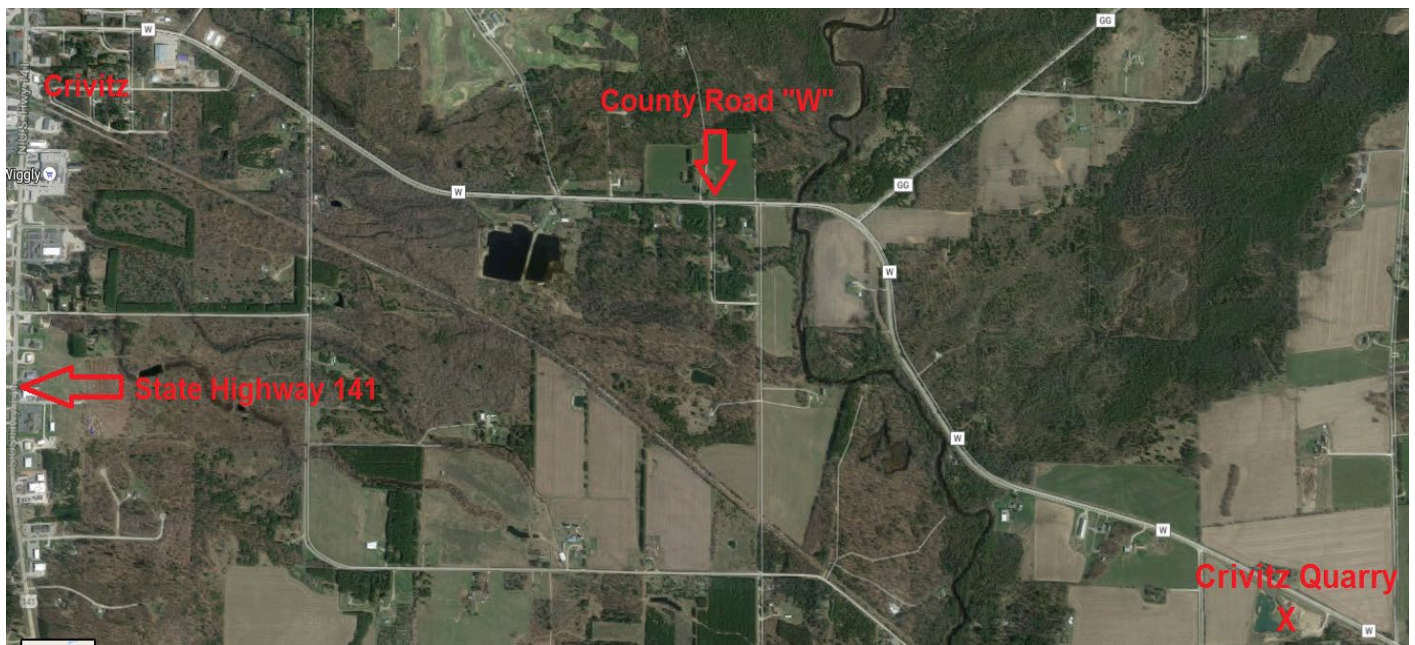
850	1 1/2" Mississippi River Stone	Tons
851	Big Round Stone	Tons
854	Top Soil	Yards
855	Pulverized Top Soil	Yards
856	Screened Top Soil	Yards
867	Peastone	Tons
868	3/4" Washed Stone	Tons
869	1 1/2" Washed Stone	Tons
880	Mulch - Red	Yards
882	Mulch - Natural Color	Yards

All Prices Are Per Ton (unless otherwise noted), FOB, and Do Not Include Tax.

All Prices Are Based on Full Load Quantities.

A Minimum charge of \$25.00 applies to all material loaded by Peters Concrete Co.

**All Prices Are Subject to Change Without Notice.**



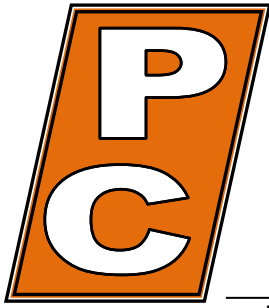
**X** Peters Site

## Crivitz Area

<b><u>Site</u></b>	Crivitz Quarry
<b><u>ID #</u></b>	23756
<b><u>Address</u></b>	6985 County Road W
<b><u>Municipality</u></b>	Crivitz
<b><u>Zip</u></b>	54114

### **General Directions**

East on County Rd W from 141/Crivitz 3.4 miles



# PETERS CONCRETE COMPANY

**Main Office / Plant**

1516 Atkinson Drive  
Green Bay, WI 54303  
Phone (920) 494-3700  
Fax (920) 494-5475

**Marinette Plant**

1604 W. Cleveland Ave.  
Marinette, WI 54143  
Phone 1-800-735-1505  
Fax (715) 732-9028

**Bonduel Plant**

N3601 State Highway 47  
Bonduel, WI 54107  
Phone (715) 758-2363  
Fax (715) 758-6362

[www.petersconcrete.com](http://www.petersconcrete.com)

Ready Mixed Concrete · Excavation · Heavy & Highway · Sewer & Water · Crushing & Aggregates

## Crivitz Area

Prices Effective February 1, 2023

<u>Code</u>	<u>Material</u>	<u>Crivitz Quarry</u> <u>23756</u>
831	3/4" Crushed Stone	\$6.75
832	1 1/4" Crushed Stone	\$6.75
819	Stone Dust	\$6.25
833	Breaker Run	\$6.50
825	3/4" Screened Stone	\$7.75
826	1 1/2" Screened Stone	\$7.75
828	3" Crushed Stone	\$6.75

All Prices Are Per Ton (unless otherwise noted), FOB, and Do Not Include Tax.

All Prices Are Based on Full Load Quantities.

A Minimum charge of \$25.00 applies to all material loaded by Peters Concrete Co.

**All Prices Are Subject to Change Without Notice.**



### Porterfield Area

**Site** Peters Porterfield Quarry

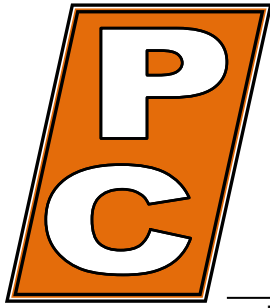
**ID #** 23732

**Address** County Road E

**Municipality** Porterfield      **County:** Marinette

**General Directions:**

North on County Road E from Highway 64, 2.4 Miles, West side of road.



# PETERS CONCRETE COMPANY

**Main Office / Plant**

1516 Atkinson Drive  
Green Bay, WI 54303  
Phone (920) 494-3700  
Fax (920) 494-5475

**Marinette Plant**

1604 W. Cleveland Ave.  
Marinette, WI 54143  
Phone 1-800-735-1505  
Fax (715) 732-9028

**Bonduel Plant**

N3601 State Highway 47  
Bonduel, WI 54107  
Phone (715) 758-2363  
Fax (715) 758-6362

[www.petersconcrete.com](http://www.petersconcrete.com)

Ready Mixed Concrete · Excavation · Heavy & Highway · Sewer & Water · Crushing & Aggregates

## Porterfield Area

Prices Effective February 1, 2023

<u>Code</u>	<u>Material</u>	<u>Peters-Porterfield Quarry</u> <u>23732</u>
802	Clay Fill	\$4.00/Yard
831	3/4" Crushed Stone	\$7.50
832	1 1/4" Crushed Stone	\$7.50
819	Stone Dust	\$7.50
833	Breaker Run	\$7.25
825	3/4" Screened Stone	\$8.25
826	1 1/2" Screened Stone	\$8.25
827	3" Screened	\$8.25
828	3" Crushed Stone	\$7.50
838	Light Rip Rap	\$18.00
839	Med & Heavy Rip Rap	\$20.00

All Prices Are Per Ton (unless otherwise noted), FOB, and Do Not Include Tax.

All Prices Are Based on Full Load Quantities.

A Minimum charge of \$25.00 applies to all material loaded by Peters Concrete Co.

**All Prices Are Subject to Change Without Notice.**

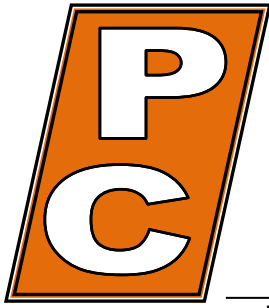




**X** Peters Site

## Marinette Area

<b><u>Site</u></b>	Marinette Plant
<b><u>ID #</u></b>	23704
<b><u>Address</u></b>	W1604 Cleveland Ave
<b><u>Municipality</u></b>	Marinette
<b><u>Zip</u></b>	54143
<b><u>General Directions:</u></b>	North on Roosevelt Road from 41; West on W. Cleveland Ave.



# PETERS CONCRETE COMPANY

**Main Office / Plant**

1516 Atkinson Drive  
Green Bay, WI 54303  
Phone (920) 494-3700  
Fax (920) 494-5475

**Marinette Plant**

1604 W. Cleveland Ave.  
Marinette, WI 54143  
Phone 1-800-735-1505  
Fax (715) 732-9028

**Bonduel Plant**

N3601 State Highway 47  
Bonduel, WI 54107  
Phone (715) 758-2363  
Fax (715) 758-6362

[www.petersconcrete.com](http://www.petersconcrete.com)

Ready Mixed Concrete · Excavation · Heavy & Highway · Sewer & Water · Crushing & Aggregates

## Marinette Area

Prices Effective February 1, 2023

<u>Code</u>	<u>Material</u>	<u>Marinette Plant/Plant 4</u> <u>23704</u>
803	Sand Fill	\$5.00/CY
808	Washed Sand	\$16.50
868	3/4" Washed Stone	\$14.00
869	1 1/2" Washed Stone	\$14.00
831	3/4" Crushed Stone	\$11.00
832	1 1/4" Crushed Stone	\$11.00
825	3/4" Screened Stone	\$11.75
826	1 1/2" Screened Stone	\$11.75
846	1 1/4" Recycled Concrete	\$8.00
	Concrete Blocks/Barriers	Call for price

All Prices Are Per Ton (unless otherwise noted), FOB, and Do Not Include Tax.

All Prices Are Based on Full Load Quantities.

A Minimum charge of \$25.00 applies to all material loaded by Peters Concrete Co.

**All Prices Are Subject to Change Without Notice.**



**X** Peters Site

### **Peshtigo Area**

**Site** Peters-Peshtigo (Formerly Biundo) Quarry

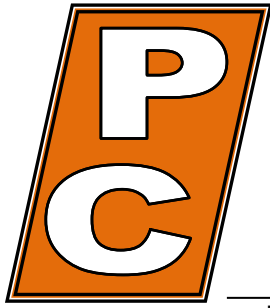
**ID #** 23737

**Address** Vernon Hills Drive

**Municipality** Peshtigo

**Zip** 54157

**General Directions:** West on County Rd M from 41, South on Vernon Hills Drive



# PETERS CONCRETE COMPANY

**Main Office / Plant**

1516 Atkinson Drive  
Green Bay, WI 54303  
Phone (920) 494-3700  
Fax (920) 494-5475

**Marinette Plant**

1604 W. Cleveland Ave.  
Marinette, WI 54143  
Phone 1-800-735-1505  
Fax (715) 732-9028

**Bonduel Plant**

N3601 State Highway 47  
Bonduel, WI 54107  
Phone (715) 758-2363  
Fax (715) 758-6362

[www.petersconcrete.com](http://www.petersconcrete.com)

Ready Mixed Concrete · Excavation · Heavy & Highway · Sewer & Water · Crushing & Aggregates

## Peshtigo Area

Prices Effective February 1, 2023

<u>Code</u>	<u>Material</u>	<u>Peters-Peshtigo Quarry</u> <u>23737</u>
802	Clay Fill	\$3.00/Yard
831	3/4" Crushed Stone	\$7.50
832	1 1/4" Crushed Stone	\$7.50
819	Stone Dust	\$7.50
833	Breaker Run	\$7.25
825	3/4" Screened Stone	\$8.25
826	1 1/2" Screened Stone	\$8.25
827	3" Screened	\$8.25
828	3" Crushed Stone	\$7.50
838	Light Rip Rap	\$18.00
839	Medium Rip Rap	\$20.00
840	Heavy Rip Rap	\$20.00
854	Top Soil	\$8.00/Yard

All Prices Are Per Ton (unless otherwise noted), FOB, and Do Not Include Tax.

All Prices Are Based on Full Load Quantities.

A Minimum charge of \$25.00 applies to all material loaded by Peters Concrete Co.

**All Prices Are Subject to Change Without Notice.**

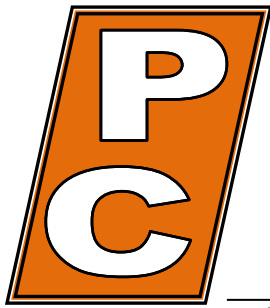




**X** Peters Site

## Coleman Area

<b><u>Site</u></b>	Peters-Coleman (Formerly Noll) Pit
<b><u>ID #</u></b>	23748
<b><u>Address</u></b>	3474 N. 9 <sup>th</sup> Road
<b><u>Municipality</u></b>	Coleman
<b><u>Zip</u></b>	54112
<b><u>General Directions</u></b>	East on E .Main/County Road "B" from 141; North on N. 9th Road



# PETERS CONCRETE COMPANY

**Main Office / Plant**

1516 Atkinson Drive  
Green Bay, WI 54303  
Phone (920) 494-3700  
Fax (920) 494-5475

**Marinette Plant**

1604 W. Cleveland Ave.  
Marinette, WI 54143  
Phone 1-800-735-1505  
Fax (715) 732-9028

**Bonduel Plant**

N3601 State Highway 47  
Bonduel, WI 54107  
Phone (715) 758-2363  
Fax (715) 758-6362

[www.petersconcrete.com](http://www.petersconcrete.com)

---

Ready Mixed Concrete · Excavation · Heavy & Highway · Sewer & Water · Crushing & Aggregates

---

## Coleman Area

Prices Effective February 1, 2023

<u>Code</u>	<u>Material</u>	<u>Peters-Coleman Pit</u> <u>23748</u>
803	Sand Fill	\$5.00/Yard
804	Pond Sand	\$4.00/Yard
808	Washed Sand	\$12.00
834	Pit Run	\$6.00
843	3/4" Crushed Gravel	\$7.00
844	1 1/4" Crushed Gravel	\$7.00
868	3/4" Washed Stone	\$9.50
869	1 1/2" Washed Stone	\$9.50

All Prices Are Per Ton (unless otherwise noted), FOB, and Do Not Include Tax.

All Prices Are Based on Full Load Quantities.

A Minimum charge of \$25.00 applies to all material loaded by Peters Concrete Co.

**All Prices Are Subject to Change Without Notice.**

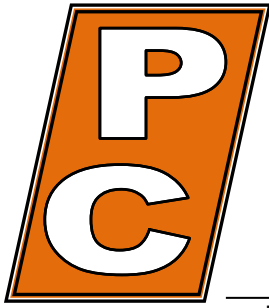


**X** Peters Site

### Oconto Area

<b><u>Site</u></b>	Caelwaerts Quarry
<b><u>ID #</u></b>	23750
<b><u>Address</u></b>	Maple Grove School Road
<b><u>Municipality</u></b>	Oconto
<b><u>Zip</u></b>	54153
<b><u>General Directions:</u></b>	East on Maple Grove School Road from 41





# PETERS CONCRETE COMPANY

**Main Office / Plant**

1516 Atkinson Drive  
Green Bay, WI 54303  
Phone (920) 494-3700  
Fax (920) 494-5475

**Marinette Plant**

1604 W. Cleveland Ave.  
Marinette, WI 54143  
Phone 1-800-735-1505  
Fax (715) 732-9028

**Bonduel Plant**

N3601 State Highway 47  
Bonduel, WI 54107  
Phone (715) 758-2363  
Fax (715) 758-6362

[www.petersconcrete.com](http://www.petersconcrete.com)

Ready Mixed Concrete · Excavation · Heavy & Highway · Sewer & Water · Crushing & Aggregates

## Oconto Area

Prices Effective February 1, 2023

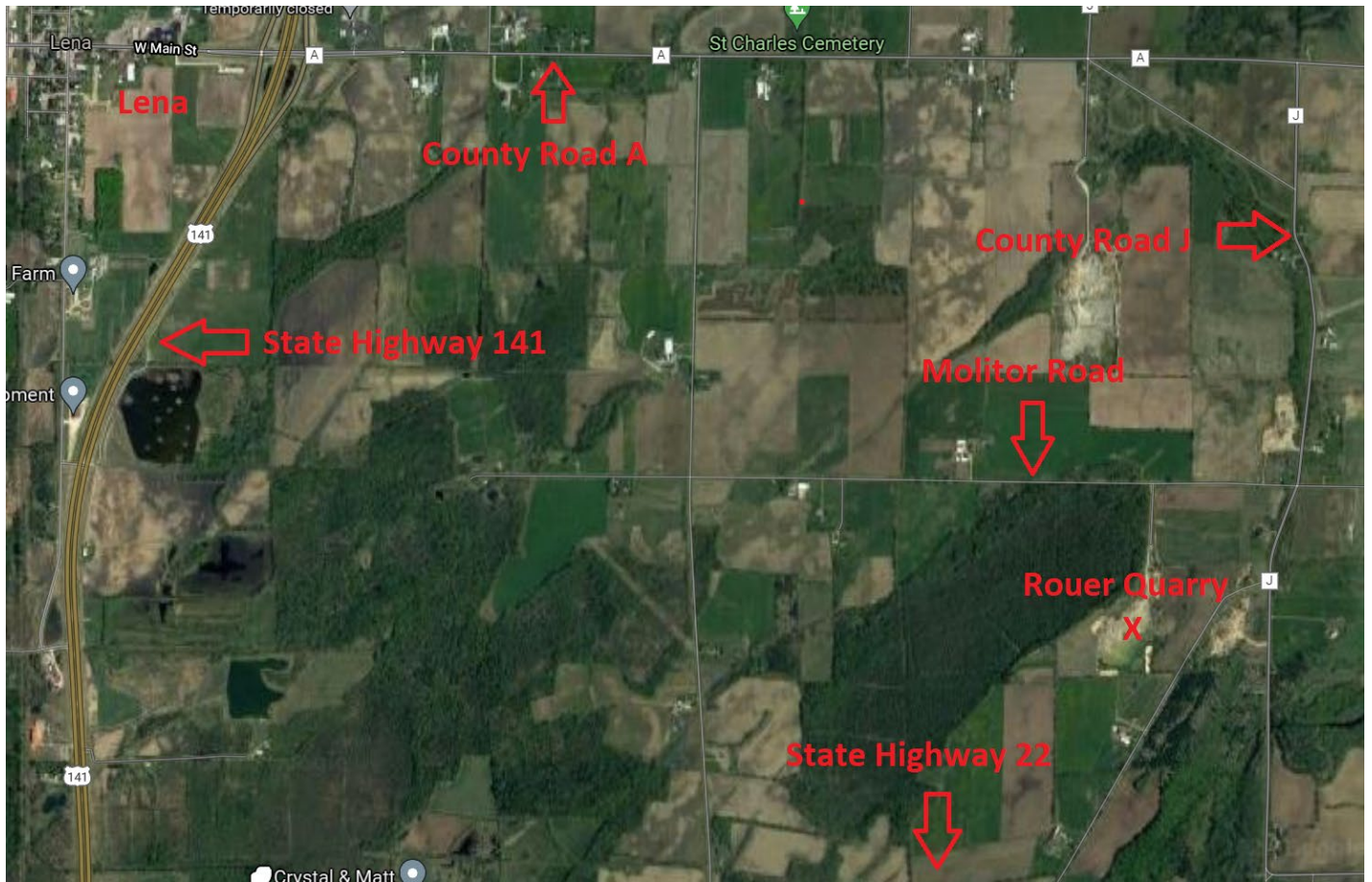
<u>Code</u>	<u>Material</u>	<u>Caelwaerts Quarry</u> <u>23750</u>
831	3/4" Crushed Stone	\$7.50
832	1 1/4" Crushed Stone	\$7.50
828	3" Crushed Stone	\$7.50

All Prices Are Per Ton (unless otherwise noted), FOB, and Do Not Include Tax.

All Prices Are Based on Full Load Quantities.

A Minimum charge of \$25.00 applies to all material loaded by Peters Concrete Co.

**All Prices Are Subject to Change Without Notice.**



### Lena Area

**Site** Rouer Quarry

**ID #** 23733

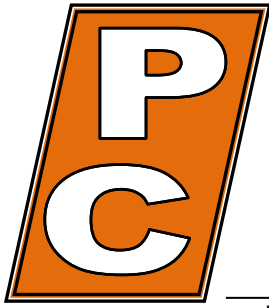
**Address** 4601 Molitor Road

**Municipality** Oconto

**County:** Oconto

**Zip** 54153

**General Directions:** Either east on County A from Highway 141; south on County J from County A; west on Molitor Road from County J; or North on J from State Highway 22; west from County J on Molitor Road.



# PETERS CONCRETE COMPANY

**Main Office / Plant**

1516 Atkinson Drive  
Green Bay, WI 54303  
Phone (920) 494-3700  
Fax (920) 494-5475

**Marinette Plant**

1604 W. Cleveland Ave.  
Marinette, WI 54143  
Phone 1-800-735-1505  
Fax (715) 732-9028

**Bonduel Plant**

N3601 State Highway 47  
Bonduel, WI 54107  
Phone (715) 758-2363  
Fax (715) 758-6362

[www.petersconcrete.com](http://www.petersconcrete.com)

Ready Mixed Concrete · Excavation · Heavy & Highway · Sewer & Water · Crushing & Aggregates

## Lena Area

Prices Effective February 1, 2023

<u>Code</u>	<u>Material</u>	<u>Rouer Quarry</u> <u>23733</u>
802	Clay Fill	\$4.00/Yard
831	3/4" Crushed Stone	\$7.50
832	1 1/4" Crushed Stone	\$7.50
819	Stone Dust	\$7.50
833	Breaker Run	\$7.25
825	3/4" Screened Stone	\$8.25
826	1 1/2" Screened Stone	\$8.25
827	3" Screened	\$8.25
828	3" Crushed Stone	\$7.50
838	Light Rip Rap	\$16.00

All Prices Are Per Ton (unless otherwise noted), FOB, and Do Not Include Tax.

All Prices Are Based on Full Load Quantities.

A Minimum charge of \$25.00 applies to all material loaded by Peters Concrete Co.

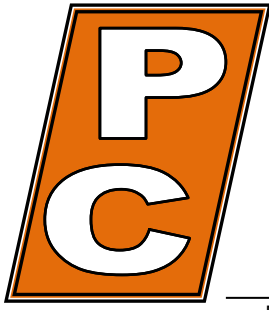
**All Prices Are Subject to Change Without Notice.**



### Gillett Area

<b><u>Site</u></b>	Gillett Quarry	
<b><u>ID #</u></b>	23730	
<b><u>Address</u></b>	10326 Valley Line Road	
<b><u>Municipality</u></b>	Gillett	<b><u>County:</u></b> Oconto
<b><u>Zip</u></b>	54124	

**General Directions:** North on County G from Highway 32; west on Valley Line Road from County G; west on Valley Line Road from County G.



# PETERS CONCRETE COMPANY

**Main Office / Plant**

1516 Atkinson Drive  
Green Bay, WI 54303  
Phone (920) 494-3700  
Fax (920) 494-5475

**Marinette Plant**

1604 W. Cleveland Ave.  
Marinette, WI 54143  
Phone 1-800-735-1505  
Fax (715) 732-9028

**Bonduel Plant**

N3601 State Highway 47  
Bonduel, WI 54107  
Phone (715) 758-2363  
Fax (715) 758-6362

[www.petersconcrete.com](http://www.petersconcrete.com)

Ready Mixed Concrete · Excavation · Heavy & Highway · Sewer & Water · Crushing & Aggregates

## Lena Area

Prices Effective February 1, 2023

<u>Code</u>	<u>Material</u>	<u>Gillett Quarry</u> <u>23730</u>
831	3/4" Crushed Stone	\$7.50
832	1 1/4" Crushed Stone	\$7.50
819	Stone Dust	\$8.25
833	Breaker Run	\$7.25
825	3/4" Screened Stone	\$8.25
826	1 1/2" Screened Stone	\$8.25
827	3" Screened	\$8.25
828	3" Crushed Stone	\$7.50
838	Light Rip Rap	\$18.00
839	Medium Rip Rap	\$18.00
840	Heavy Rip Rap	\$20.00

All Prices Are Per Ton (unless otherwise noted), FOB, and Do Not Include Tax.

All Prices Are Based on Full Load Quantities.

A Minimum charge of \$25.00 applies to all material loaded by Peters Concrete Co.

**All Prices Are Subject to Change Without Notice.**





### Stilies Area

**Site** Crozier Sand Pit

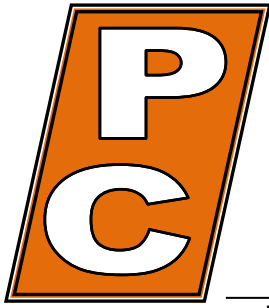
**ID #** 23736

**Address** 6926 Konitzer Road

**Municipality** Oconto Falls      **County:** Oconto

**Zip** 54154

**General Directions:** West on Timberline Road from US 141, take Konitzer Road to 6926 Kontizer Road, red gate.



# PETERS CONCRETE COMPANY

**Main Office / Plant**

1516 Atkinson Drive  
Green Bay, WI 54303  
Phone (920) 494-3700  
Fax (920) 494-5475

**Marinette Plant**

1604 W. Cleveland Ave.  
Marinette, WI 54143  
Phone 1-800-735-1505  
Fax (715) 732-9028

**Bonduel Plant**

N3601 State Highway 47  
Bonduel, WI 54107  
Phone (715) 758-2363  
Fax (715) 758-6362

[www.petersconcrete.com](http://www.petersconcrete.com)

Ready Mixed Concrete · Excavation · Heavy & Highway · Sewer & Water · Crushing & Aggregates

## Stiles Area

Prices Effective February 1, 2023

<u>Code</u>	<u>Material</u>	<u>Crozier Sand Pit</u> <u>23736</u>
803	Fill Sand	\$5.00/Yard

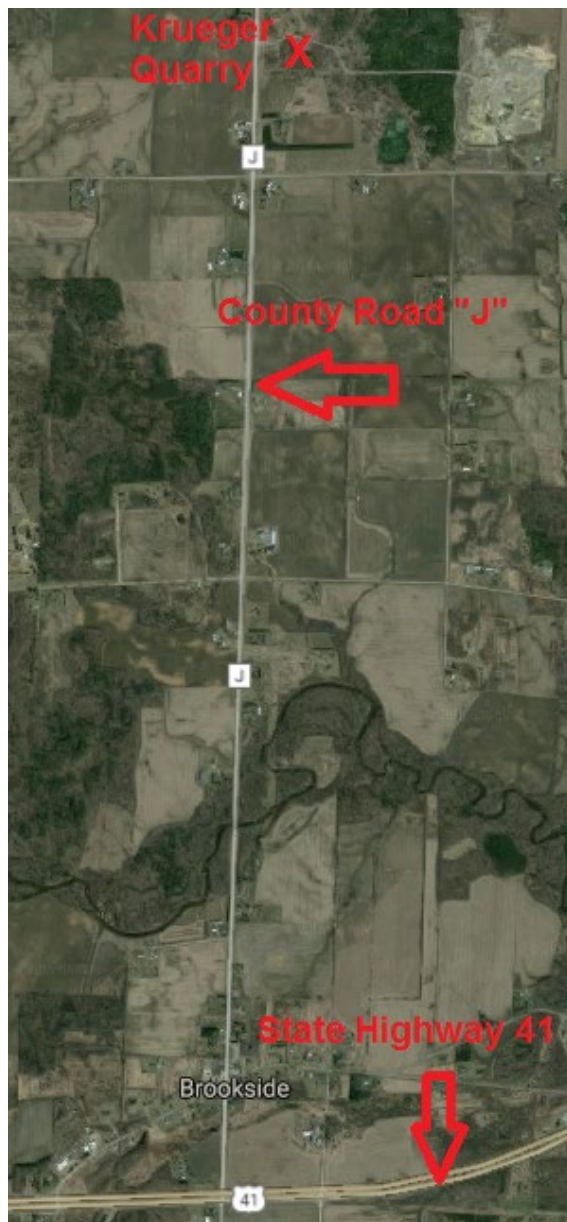
All Prices Are Per Ton (unless otherwise noted), FOB, and Do Not Include Tax.

All Prices Are Based on Full Load Quantities.

A Minimum charge of \$25.00 applies to all material loaded by Peters Concrete Co.

**All Prices Are Subject to Change Without Notice.**

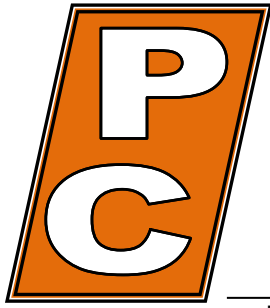




**X** Peters Site

### **Abrams Area**

<b><u>Site</u></b>	Krueger Quarry
<b><u>ID #</u></b>	23706
<b><u>Address</u></b>	4570 County Road J
<b><u>Municipality</u></b>	Oconto
<b><u>Zip</u></b>	54153
<b><u>General Directions:</u></b>	North on County Road "J" from 41



# PETERS CONCRETE COMPANY

**Main Office / Plant**

1516 Atkinson Drive  
Green Bay, WI 54303  
Phone (920) 494-3700  
Fax (920) 494-5475

**Marinette Plant**

1604 W. Cleveland Ave.  
Marinette, WI 54143  
Phone 1-800-735-1505  
Fax (715) 732-9028

**Bonduel Plant**

N3601 State Highway 47  
Bonduel, WI 54107  
Phone (715) 758-2363  
Fax (715) 758-6362

[www.petersconcrete.com](http://www.petersconcrete.com)

Ready Mixed Concrete · Excavation · Heavy & Highway · Sewer & Water · Crushing & Aggregates

## Oconto Area

Prices Effective February 1, 2023

<u>Code</u>	<u>Material</u>	<u>Krueger Quarry</u> <u>23706</u>
802	Clay Fill	\$4.00/Yard
854	Top Soil	\$8.00/ Yard
831	3/4" Crushed Stone	\$7.50
832	1 1/4" Crushed Stone	\$7.50
819	Stone Dust	\$7.50
830	Stone Chips	\$8.50
833	Breaker Run	\$7.25
825	3/4" Screened Stone	\$8.25
826	1 1/2" Screened Stone	\$8.25
827	3" Screened	\$8.25
828	3" Crushed Stone	\$7.50
838	Light Rip Rap	\$16.00
839	Medium Rip Rap	\$18.00
840	Heavy Rip Rap	\$18.00
846	3/4, 1 1/4, Breaker Run Recycled Concrete	\$7.00
845	Recycled Black Top	\$8.50

All Prices Are Per Ton (unless otherwise noted), FOB, and Do Not Include Tax.

All Prices Are Based on Full Load Quantities.

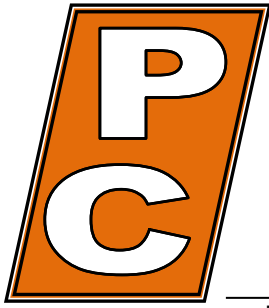
A Minimum charge of \$25.00 applies to all material loaded by Peters Concrete Co.

**All Prices Are Subject to Change Without Notice.**



### Little Suamico Area

<b><u>Site</u></b>	Snyder Quarry	
<b><u>ID #</u></b>	23734	
<b><u>Address</u></b>	2826 County Road S	
<b><u>Municipality</u></b>	Little Suamico	<b><u>County:</u></b> Oconto
<b><u>Zip</u></b>	54141	
<b><u>General Directions:</u></b>	East on County Road "S" from 141/41	



# PETERS CONCRETE COMPANY

**Main Office / Plant**

1516 Atkinson Drive  
Green Bay, WI 54303  
Phone (920) 494-3700  
Fax (920) 494-5475

**Marinette Plant**

1604 W. Cleveland Ave.  
Marinette, WI 54143  
Phone 1-800-735-1505  
Fax (715) 732-9028

**Bonduel Plant**

N3601 State Highway 47  
Bonduel, WI 54107  
Phone (715) 758-2363  
Fax (715) 758-6362

[www.petersconcrete.com](http://www.petersconcrete.com)

Ready Mixed Concrete · Excavation · Heavy & Highway · Sewer & Water · Crushing & Aggregates

## Little Suamico Area

Prices Effective February 1, 2023

<u>Code</u>	<u>Material</u>	<u>Snyder Quarry</u> <u>23734</u>
831	3/4" Crushed Stone	\$7.50
832	1 1/4" Crushed Stone	\$7.50
819	Stone Dust	\$7.50
833	Breaker Run	\$7.25
825	3/4" Screened Stone	\$8.25
826	1 1/2" Screened Stone	\$8.25
827	3" Screened	\$8.25
828	3" Crushed Stone	\$7.50
838	Light Rip Rap	\$16.00
845	Black Top Recycled	\$8.50
846	Recycled Concrete	\$7.00

All Prices Are Per Ton (unless otherwise noted), FOB, and Do Not Include Tax.

All Prices Are Based on Full Load Quantities.

A Minimum charge of \$25.00 applies to all material loaded by Peters Concrete Co.

**All Prices Are Subject to Change Without Notice.**





### Abrams Area

**Site** Foster Sand Pit

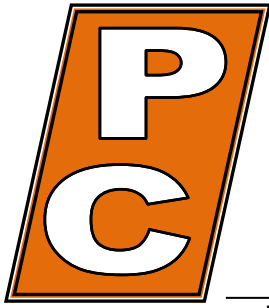
**ID #** 23729

**Address** 5997 Geano Beach Road

**Municipality** Abrams **County:** Oconto

**Zip** 54101

**General Directions:** Either South on W. Frontage Road on County D from 41/141 or North on W. Frontage Road on County S from 41/141, to Geano Beach Road, West on Geano Beach Road.



# PETERS CONCRETE COMPANY

**Main Office / Plant**

1516 Atkinson Drive  
Green Bay, WI 54303  
Phone (920) 494-3700  
Fax (920) 494-5475

**Marinette Plant**

1604 W. Cleveland Ave.  
Marinette, WI 54143  
Phone 1-800-735-1505  
Fax (715) 732-9028

**Bonduel Plant**

N3601 State Highway 47  
Bonduel, WI 54107  
Phone (715) 758-2363  
Fax (715) 758-6362

[www.petersconcrete.com](http://www.petersconcrete.com)

Ready Mixed Concrete · Excavation · Heavy & Highway · Sewer & Water · Crushing & Aggregates

## Abrams Area

Prices Effective February 1, 2023

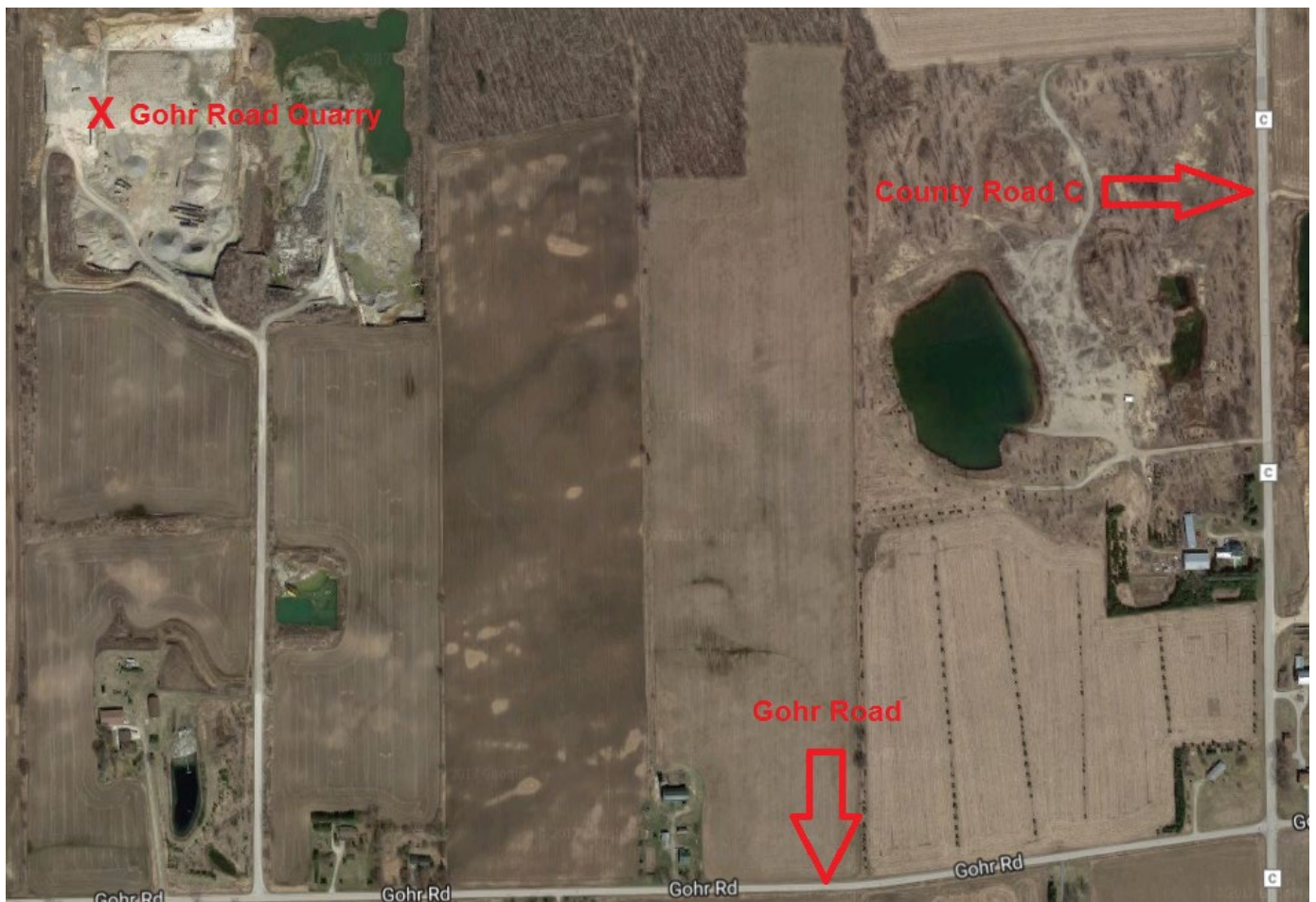
<u>Code</u>	<u>Material</u>	<u>Foster Sand Pit</u> <u>23729</u>
803	Fill Sand	\$5.00/Yard
854	Top Soil	\$11.00/Yard

All Prices Are Per Ton (unless otherwise noted), FOB, and Do Not Include Tax.

All Prices Are Based on Full Load Quantities.

A Minimum charge of \$25.00 applies to all material loaded by Peters Concrete Co.

**All Prices Are Subject to Change Without Notice.**

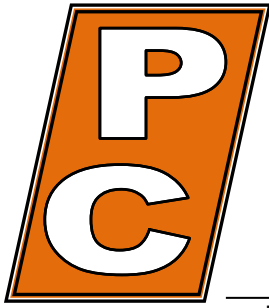


**X** Peters Site

### **Pulaski – Abrams - Suamico Area**

<b><u>Site</u></b>	Gohr Road Quarry
<b><u>ID #</u></b>	23793
<b><u>Address</u></b>	8658 Gohr Road
<b><u>Municipality</u></b>	Krakov
<b><u>Zip</u></b>	55137
<b><u>General Directions</u></b>	West on County Road S from Highways 41/141; North on County Road C; West on Gohr Road.





# PETERS CONCRETE COMPANY

**Main Office / Plant**

1516 Atkinson Drive  
Green Bay, WI 54303  
Phone (920) 494-3700  
Fax (920) 494-5475

**Marinette Plant**

1604 W. Cleveland Ave.  
Marinette, WI 54143  
Phone 1-800-735-1505  
Fax (715) 732-9028

**Bonduel Plant**

N3601 State Highway 47  
Bonduel, WI 54107  
Phone (715) 758-2363  
Fax (715) 758-6362

[www.petersconcrete.com](http://www.petersconcrete.com)

Ready Mixed Concrete · Excavation · Heavy & Highway · Sewer & Water · Crushing & Aggregates

## Pulaski – Abrams - Suamico Area

Prices Effective February 1, 2023

<u>Code</u>	<u>Material</u>	<u>Gohr Quarry</u> <u>23793</u>
802	Clay Fill	\$4.00/Yard
854	Top Soil	\$8.00/ Yard
831	3/4" Crushed Stone	\$7.50
832	1 1/4" Crushed Stone	\$7.50
819	Stone Dust	\$7.50
830	Stone Chips	\$8.25
833	Breaker Run	\$7.25
825	3/4" Screened Stone	\$8.25
826	1 1/2" Screened Stone	\$8.25
828	3" Crushed Stone	\$8.25

All Prices Are Per Ton (unless otherwise noted), FOB, and Do Not Include Tax.

All Prices Are Based on Full Load Quantities.

A Minimum charge of \$25.00 applies to all material loaded by Peters Concrete Co.

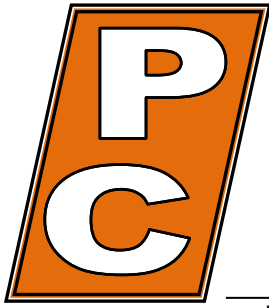
**All Prices Are Subject to Change Without Notice.**



**X** Peters Site

### **Pulaski - Suamico Area**

<b><u>Site</u></b>	Chase Quarry
<b><u>ID #</u></b>	23705
<b><u>Address</u></b>	1321 Yurek Road
<b><u>Municipality</u></b>	Pulaski
<b><u>Zip</u></b>	54162
<b><u>General Directions</u></b>	West on County Road "S" from 41/141; North on Yurek Road



# PETERS CONCRETE COMPANY

**Main Office / Plant**

1516 Atkinson Drive  
Green Bay, WI 54303  
Phone (920) 494-3700  
Fax (920) 494-5475

**Marinette Plant**

1604 W. Cleveland Ave.  
Marinette, WI 54143  
Phone 1-800-735-1505  
Fax (715) 732-9028

**Bonduel Plant**

N3601 State Highway 47  
Bonduel, WI 54107  
Phone (715) 758-2363  
Fax (715) 758-6362

[www.petersconcrete.com](http://www.petersconcrete.com)

Ready Mixed Concrete · Excavation · Heavy & Highway · Sewer & Water · Crushing & Aggregates

## Pulaski - Suamico Area

Prices Effective February 1, 2023

<u>Code</u>	<u>Material</u>	<u>Chase Quarry</u> <u>23705</u>
802	Clay Fill	\$4.00/Yard
854	Top Soil	\$8.00/ Yard
831	3/4" Crushed Stone	\$7.50
832	1 1/4" Crushed Stone	\$7.50
819	Stone Dust	\$7.50
830	Stone Chips	\$8.25
833	Breaker Run	\$7.25
825	3/4" Screened Stone	\$8.25
826	1 1/2" Screened Stone	\$8.25
828	3" Crushed Stone	\$7.50

All Prices Are Per Ton (unless otherwise noted), FOB, and Do Not Include Tax.

All Prices Are Based on Full Load Quantities.

A Minimum charge of \$25.00 applies to all material loaded by Peters Concrete Co.

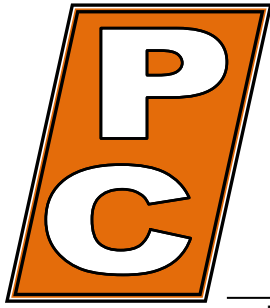
**All Prices Are Subject to Change Without Notice.**



**X** Peters Site

### Bonduel Area

<b><u>Site</u></b>	Bonduel Concrete/Wash Plant 5/Przybylski Pit
<b><u>ID #</u></b>	23710
<b><u>Address</u></b>	N3601 State Highway 47
<b><u>Municipality</u></b>	Bonduel
<b><u>Zip</u></b>	54107
<b><u>General Directions</u></b>	South on State Highway 14 from 29



# PETERS CONCRETE COMPANY

**Main Office / Plant**

1516 Atkinson Drive  
Green Bay, WI 54303  
Phone (920) 494-3700  
Fax (920) 494-5475

**Marinette Plant**

1604 W. Cleveland Ave.  
Marinette, WI 54143  
Phone 1-800-735-1505  
Fax (715) 732-9028

**Bonduel Plant**

N3601 State Highway 47  
Bonduel, WI 54107  
Phone (715) 758-2363  
Fax (715) 758-6362

[www.petersconcrete.com](http://www.petersconcrete.com)

Ready Mixed Concrete · Excavation · Heavy & Highway · Sewer & Water · Crushing & Aggregates

## Bonduel Area

Prices Effective February 1, 2023

<u>Code</u>	<u>Material</u>	<u>Bonduel Wash Plant/Plant 5/Przybylski Pit</u> <u>23710</u>
803	Fill Sand	\$5.00/Yard
804	Pond Sand	\$4.00/Yard
808	Washed Sand	\$15.00
834	Pit Run	\$6.00
868	3/4" Washed Stone	\$9.50
869	1 1/2" Washed Stone	\$9.50
867	Pea Stone	\$9.50
849	3/4" Mississippi River Rock	\$50.00
850	1 1/2" Mississippi River Rock	\$50.00
854	Top Soil	\$15.00/Yard
855	Pulverized Top Soil	\$22.00/Yard
831	3/4" Crushed Stone	\$12.00
832	1 1/4" Crushed Stone	\$12.00
830	Stone Dust	\$12.00
825	3/4" Screened Stone	\$12.75
826	1 1/2" Screened Stone	\$12.75
843	3/4" Crushed Gravel	\$7.00
844	1 1/4" Crushed Gravel	\$7.00
846	1 1/4" Recycled Concrete	\$7.00/Ton
845	Recycled Asphalt	\$8.00/Ton
880	Red Mulch	\$40.00/Yard
881	Dark Brown Mulch	\$40.00/Yard
882	Natural Color Mulch	\$40.00/Yard
	Concrete Blocks/Barriers	Call for price

All Prices Are Per Ton (unless otherwise noted), FOB, and Do Not Include Tax.

All Prices Are Based on Full Load Quantities.

A Minimum charge of \$25.00 applies to all material loaded by Peters Concrete Co.

**All Prices Are Subject to Change Without Notice.**



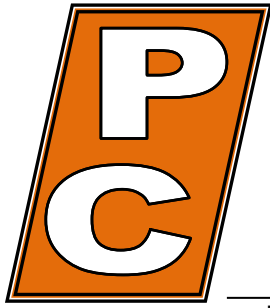


**X** Peters Site

## Green Bay Area

<b><u>Sites</u></b>	<b>Yard/Wash Plant #8</b>
<b><u>ID #</u></b>	23708
<b><u>Address</u></b>	1516 Atkinson Drive
<b><u>Municipality</u></b>	Green Bay
<b><u>Zip</u></b>	54303
<b><u>General Directions</u></b>	North on Atkinson Drive off Highway I-43 in Green Bay





# PETERS CONCRETE COMPANY

**Main Office / Plant**

1516 Atkinson Drive  
Green Bay, WI 54303  
Phone (920) 494-3700  
Fax (920) 494-5475

**Marinette Plant**

1604 W. Cleveland Ave.  
Marinette, WI 54143  
Phone 1-800-735-1505  
Fax (715) 732-9028

**Bonduel Plant**

N3601 State Highway 47  
Bonduel, WI 54107  
Phone (715) 758-2363  
Fax (715) 758-6362

[www.petersconcrete.com](http://www.petersconcrete.com)

Ready Mixed Concrete · Excavation · Heavy & Highway · Sewer & Water · Crushing & Aggregates

## Green Bay Area

Prices Effective February 1, 2023

<u>Code</u>	<u>Material</u>	<u>Yard/Wash Plant 8</u> <u>23708</u>
802	Clay Fill	\$5.00/Yard
809	Pond Sand	\$4.00/Yard
808	Washed Sand	\$15.50
868	3/4" Washed Stone	\$13.00
869	1 1/2" Washed Stone	\$13.00
867	Pea Stone	\$13.00
854	Top Soil	\$13.00/Yard
855	Pulverized Top Soil	\$22.00/Yard
831	3/4" Crushed Stone	\$12.75
832	1 1/4" Crushed Stone	\$12.75
819	Stone Dust	\$12.75
833	Breaker Run	\$12.50
825	3/4" Screened Stone	\$13.50
826	1 1/2" Screened Stone	\$13.50
827	3" Screened	\$13.50
838	Rip Rap - Light	\$21.00
839	Rip Rap - Medium	\$23.00
840	Rip Rap - Heavy/Large	\$23.00
843	3/4" Crushed Gravel	\$12.50
844	1 1/4" Crushed Gravel	\$12.50
846	1 1/4" Recycled Concrete	\$8.00
845	Recycled Asphalt	\$8.50
	Concrete Blocks/Barriers	Call for price

All Prices Are Per Ton (unless otherwise noted), FOB, and Do Not Include Tax.

All Prices Are Based on Full Load Quantities.

A Minimum charge of \$25.00 applies to all material loaded by Peters Concrete Co.

**All Prices Are Subject to Change Without Notice.**



**X** Peters Site

## **Brussels Area**

### **Sites**

### **Brussels Pit**

### **ID #**

23786

### **Address**

County Road Y

### **Municipality**

Brussels

### **Zip**

54204

### **General Directions**

South on County Road Y from State Highway 57



# PETERS CONCRETE COMPANY

**Main Office / Plant**

1516 Atkinson Drive  
Green Bay, WI 54303  
Phone (920) 494-3700  
Fax (920) 494-5475

**Marinette Plant**

1604 W. Cleveland Ave.  
Marinette, WI 54143  
Phone 1-800-735-1505  
Fax (715) 732-9028

**Bonduel Plant**

N3601 State Highway 47  
Bonduel, WI 54107  
Phone (715) 758-2363  
Fax (715) 758-6362

[www.petersconcrete.com](http://www.petersconcrete.com)

Ready Mixed Concrete · Excavation · Heavy & Highway · Sewer & Water · Crushing & Aggregates

## Brussels Area

Prices Effective February 1, 2023

<u>Code</u>	<u>Material</u>	<u>Brussels Pit</u> <u>23786</u>
803	Fill Sand	\$5.50/Yard
868	3/4" Washed Stone	\$8.50
869	1 1/2" Washed Stone	\$8.50
843	3/4" Crushed Gravel	\$7.00
844	1 1/4" Crushed Gravel	\$7.00

All Prices Are Per Ton (unless otherwise noted), FOB, and Do Not Include Tax.

All Prices Are Based on Full Load Quantities.

A Minimum charge of \$25.00 applies to all material loaded by Peters Concrete Co.

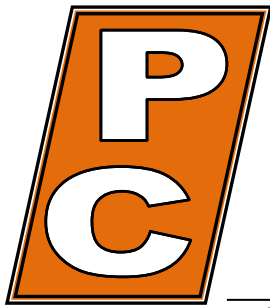
**All Prices Are Subject to Change Without Notice.**



**X** Peters Site

## Maribel Area

<b><u>Site</u></b>	Cooperstown Pit
<b><u>ID #</u></b>	23785
<b><u>Address</u></b>	County Road NN
<b><u>Municipality</u></b>	Maribel
<b><u>Zip</u></b>	54227
<b><u>General Directions</u></b>	West on State Highway 96 from Highway I-43; South on County Road NN.



# PETERS CONCRETE COMPANY

**Main Office / Plant**

1516 Atkinson Drive  
Green Bay, WI 54303  
Phone (920) 494-3700  
Fax (920) 494-5475

**Marinette Plant**

1604 W. Cleveland Ave.  
Marinette, WI 54143  
Phone 1-800-735-1505  
Fax (715) 732-9028

**Bonduel Plant**

N3601 State Highway 47  
Bonduel, WI 54107  
Phone (715) 758-2363  
Fax (715) 758-6362

[www.petersconcrete.com](http://www.petersconcrete.com)

Ready Mixed Concrete · Excavation · Heavy & Highway · Sewer & Water · Crushing & Aggregates

## Maribel Area

Prices Effective February 1, 2023

<u>Code</u>	<u>Material</u>	<u>Cooperstown Pit</u> <u>23785</u>
803	Fill Sand	\$5.00/Yard
834	Pit Run	\$6.00
843	3/4" Crushed Gravel	\$7.00
844	1 1/4" Crushed Gravel	\$7.00

All Prices Are Per Ton (unless otherwise noted), FOB, and Do Not Include Tax.

All Prices Are Based on Full Load Quantities.

A Minimum charge of \$25.00 applies to all material loaded by Peters Concrete Co.

**All Prices Are Subject to Change Without Notice.**



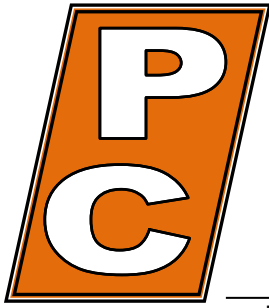


**X** Peters Site

## Appleton Area

<b><u>Site</u></b>	Deerview Yard
<b><u>ID #</u></b>	23762
<b><u>Address</u></b>	W. Deerview Drive
<b><u>Municipality</u></b>	Appleton
<b><u>Zip</u></b>	54913
<b><u>General Directions</u></b>	North (about 2 miles) on State Highway 47/N. Richmond Street from State Highway 41; West on W. Deerview Drive.





# PETERS CONCRETE COMPANY

**Main Office / Plant**

1516 Atkinson Drive  
Green Bay, WI 54303  
Phone (920) 494-3700  
Fax (920) 494-5475

**Marinette Plant**

1604 W. Cleveland Ave.  
Marinette, WI 54143  
Phone 1-800-735-1505  
Fax (715) 732-9028

**Bonduel Plant**

N3601 State Highway 47  
Bonduel, WI 54107  
Phone (715) 758-2363  
Fax (715) 758-6362

[www.petersconcrete.com](http://www.petersconcrete.com)

Ready Mixed Concrete · Excavation · Heavy & Highway · Sewer & Water · Crushing & Aggregates

## Appleton Area

Prices Effective February 1, 2023

<u>Code</u>	<u>Material</u>	<u>Deerview Yard</u> <u>23762</u>
846	1 1/4" Recycled Concrete	\$8.00
845	Recycled Asphalt	\$8.50

All Prices Are Per Ton (unless otherwise noted), FOB, and Do Not Include Tax.

All Prices Are Based on Full Load Quantities.

A Minimum charge of \$25.00 applies to all material loaded by Peters Concrete Co.

**All Prices Are Subject to Change Without Notice.**