

PETERS CONCRETE CO.

GREEN BAY, MARINETTE & BONDUEL

920 – 494 – 3700

**Crushing and Aggregate; Excavation - Heavy and Highway; Sewer and Water
Ready Mix Concrete**

2022

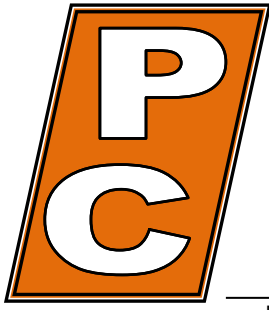
Material Prices

Prices Effective

March 1, 2022

www.petersconcrete.com

An Equal Opportunity Employer



PETERS CONCRETE COMPANY

Main Office / Plant

1516 Atkinson Drive
Green Bay, WI 54303
Phone (920) 494-3700
Fax (920) 494-5475

Marinette Plant

1604 W. Cleveland Ave.
Marinette, WI 54143
Phone 1-800-735-1505
Fax (715) 732-9028

Bonduel Plant

N3601 State Highway 47
Bonduel, WI 54107
Phone (715) 758-2363
Fax (715) 758-6362

www.petersconcrete.com

Ready Mixed Concrete · Excavation · Heavy & Highway · Sewer & Water · Crushing & Aggregates

February 20, 2022

To: Peters Concrete Company Customers

Re: 2022 Material Prices

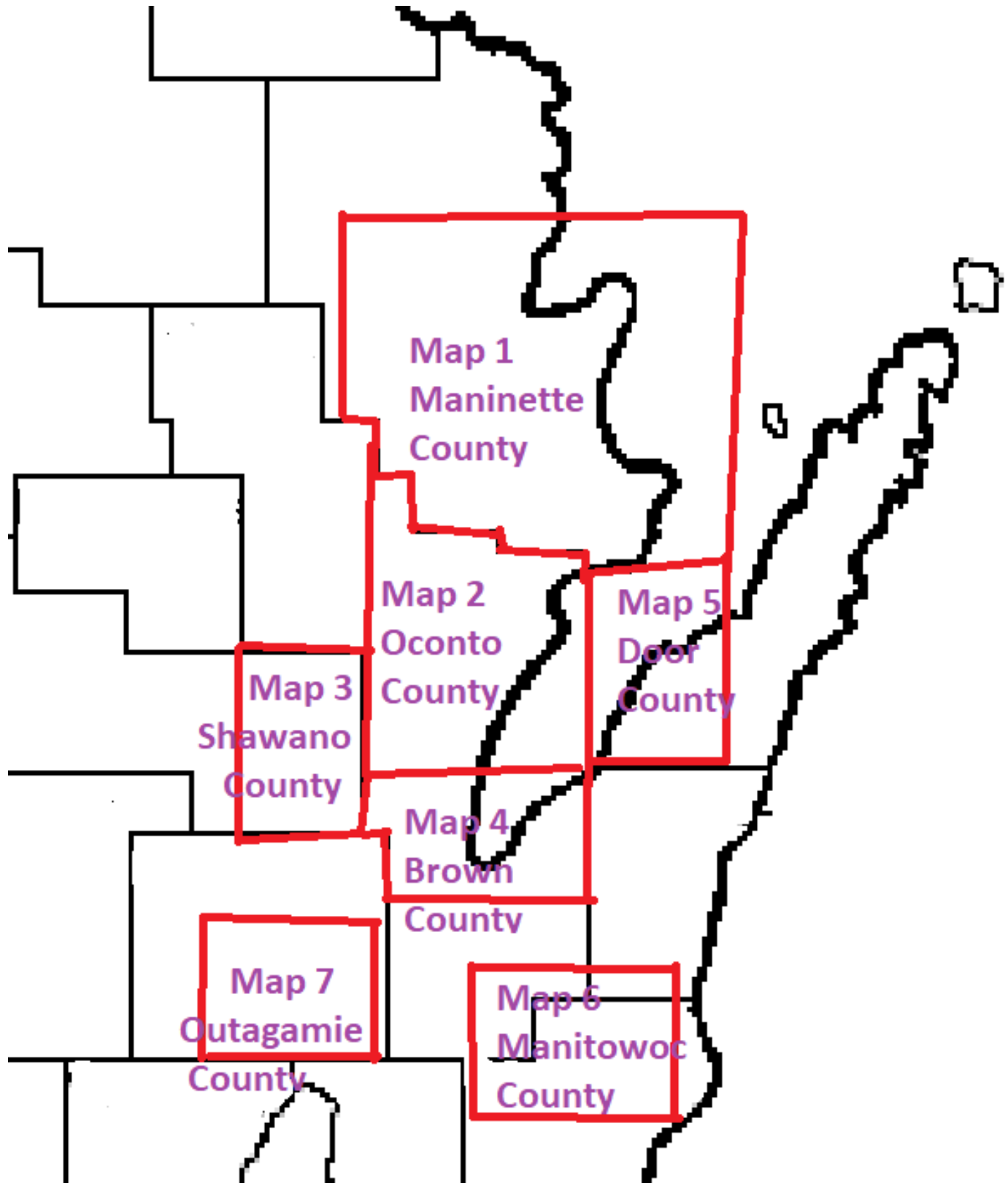
Dear Customers:

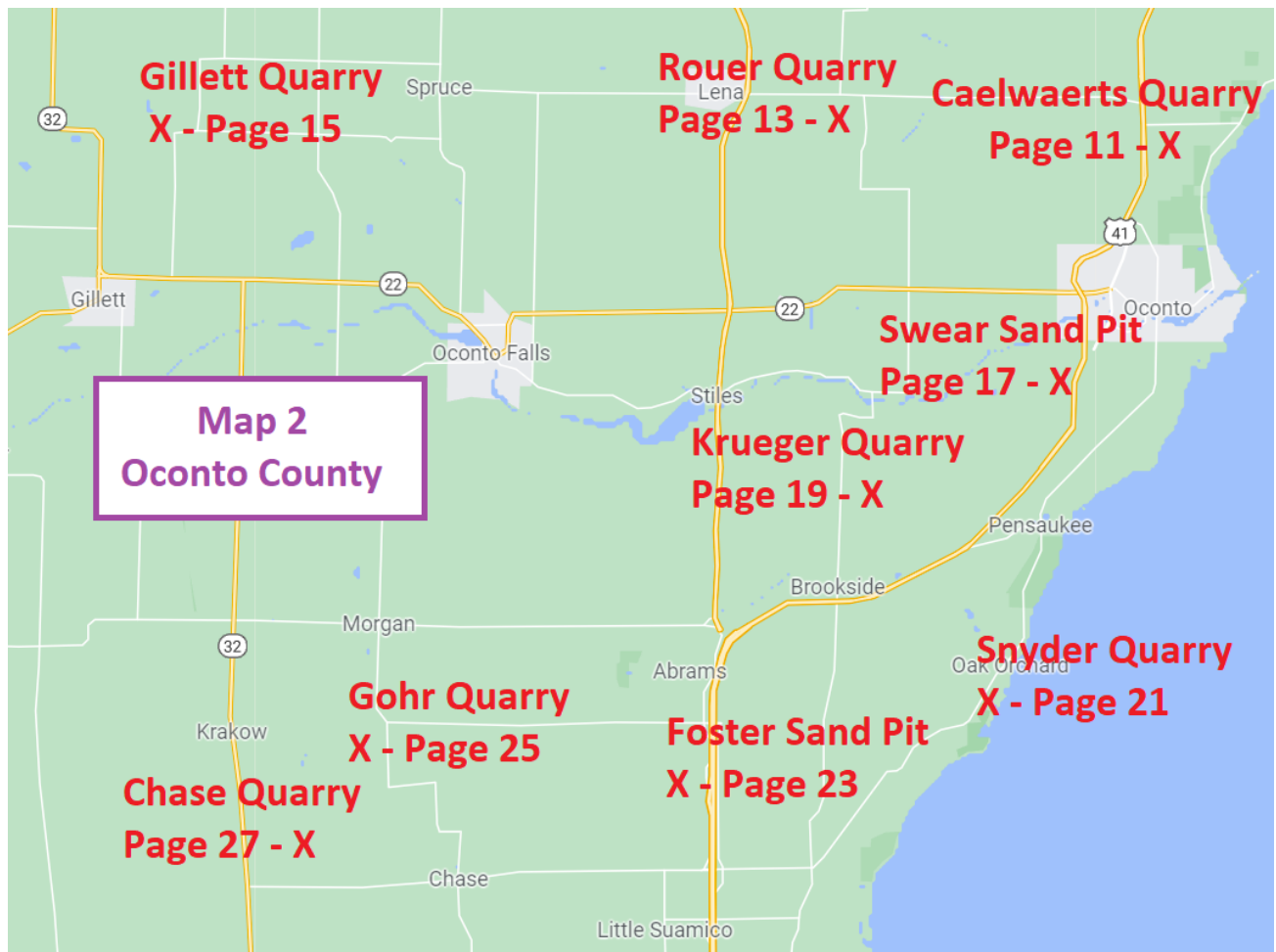
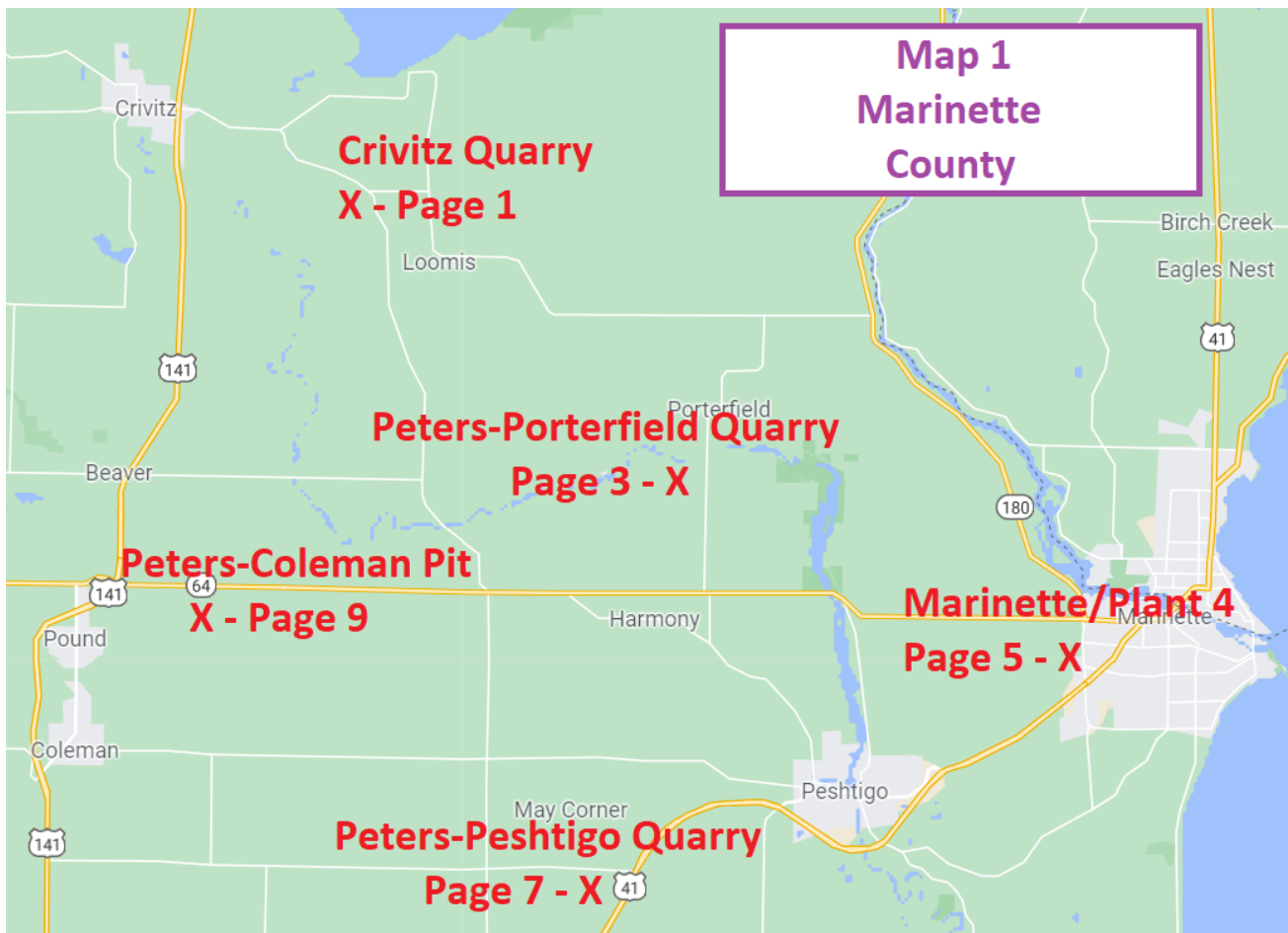
Peters Concrete Company is pleased to provide the enclosed price list for the 2022 construction season. The listed prices will be effective March 1, 2022. Included are maps showing locations of our quarries and pits and a list of additional sites and their locations that Peters Concrete Company sells materials out of. If pricing is not shown for a location that you are interested in, please call and we will be happy to provide a quote from the closest quarry or pit.

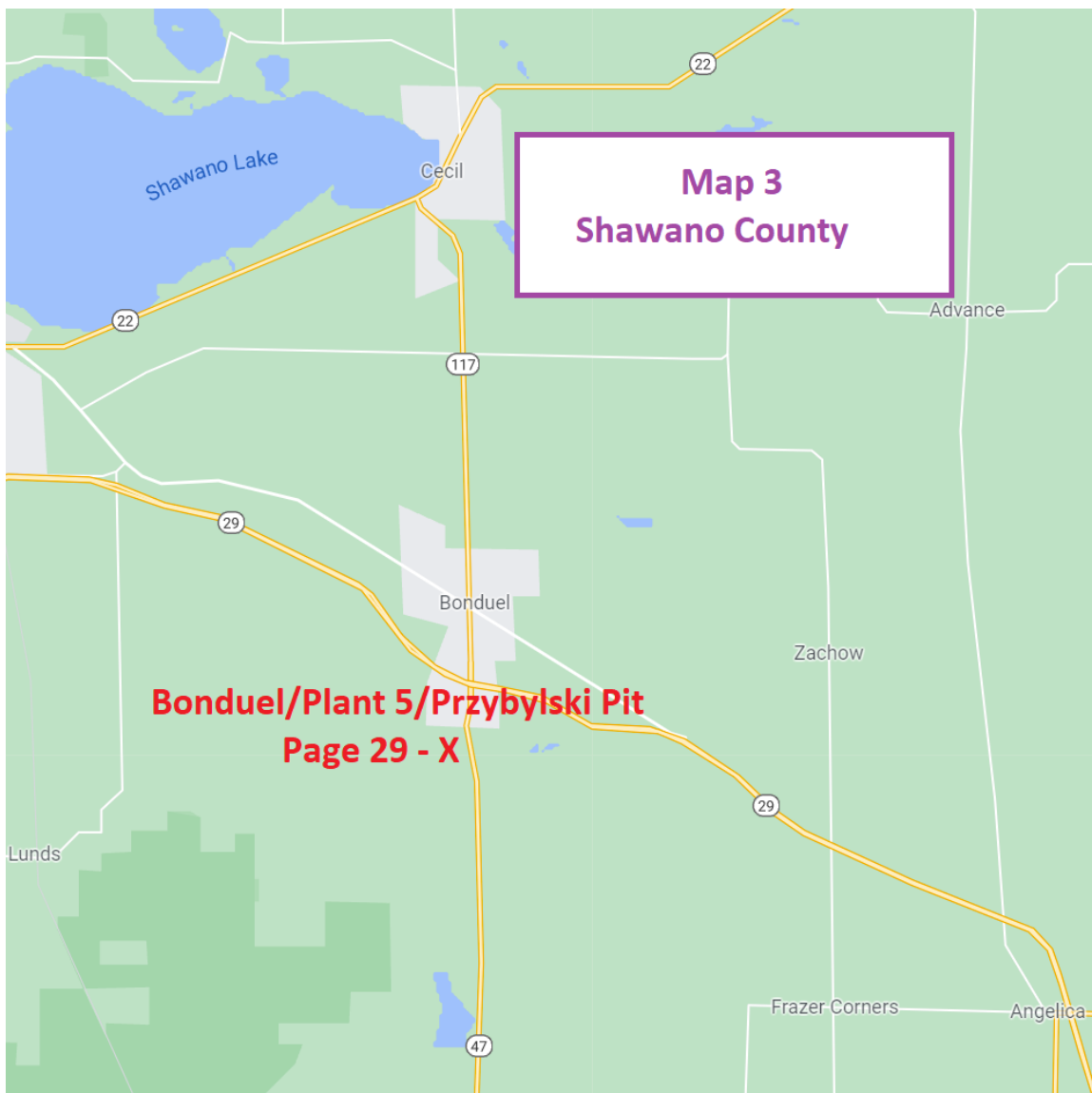
If you need a quote on material, need a large amount of material or further information, please call 920-494-3700.

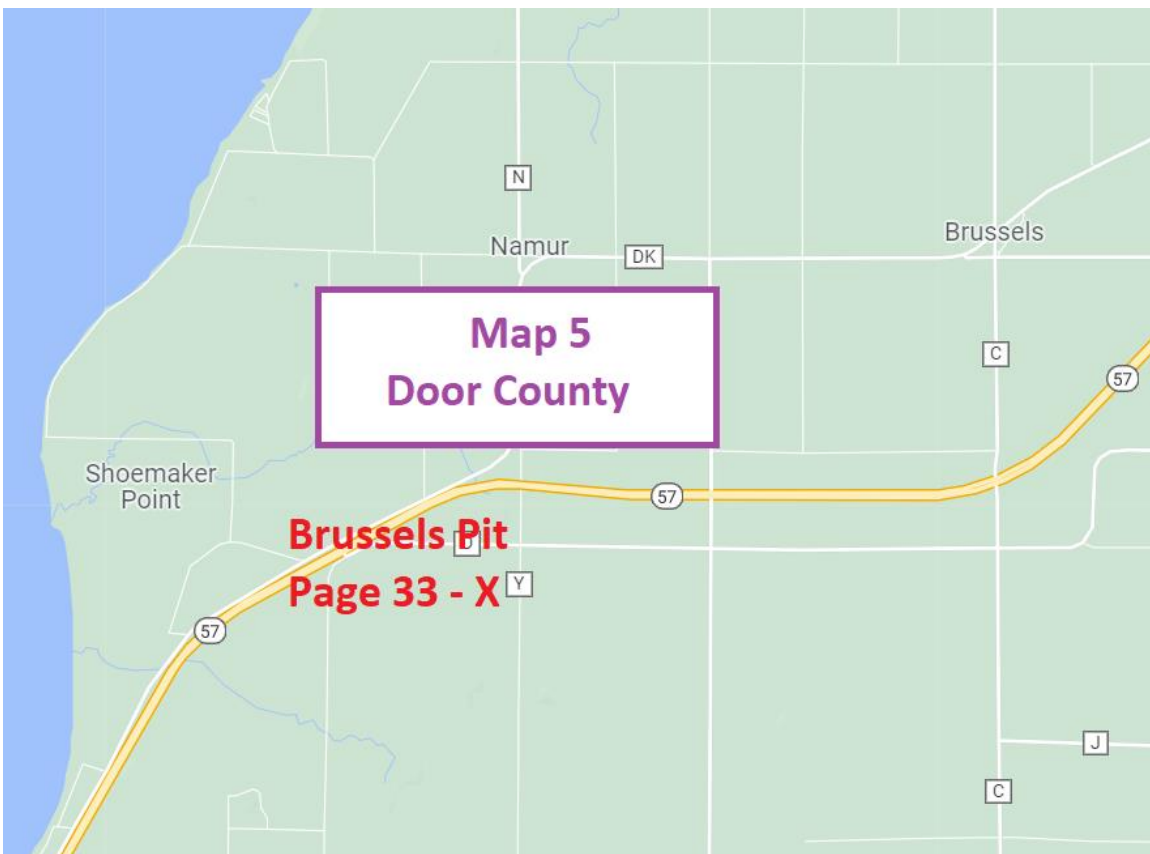
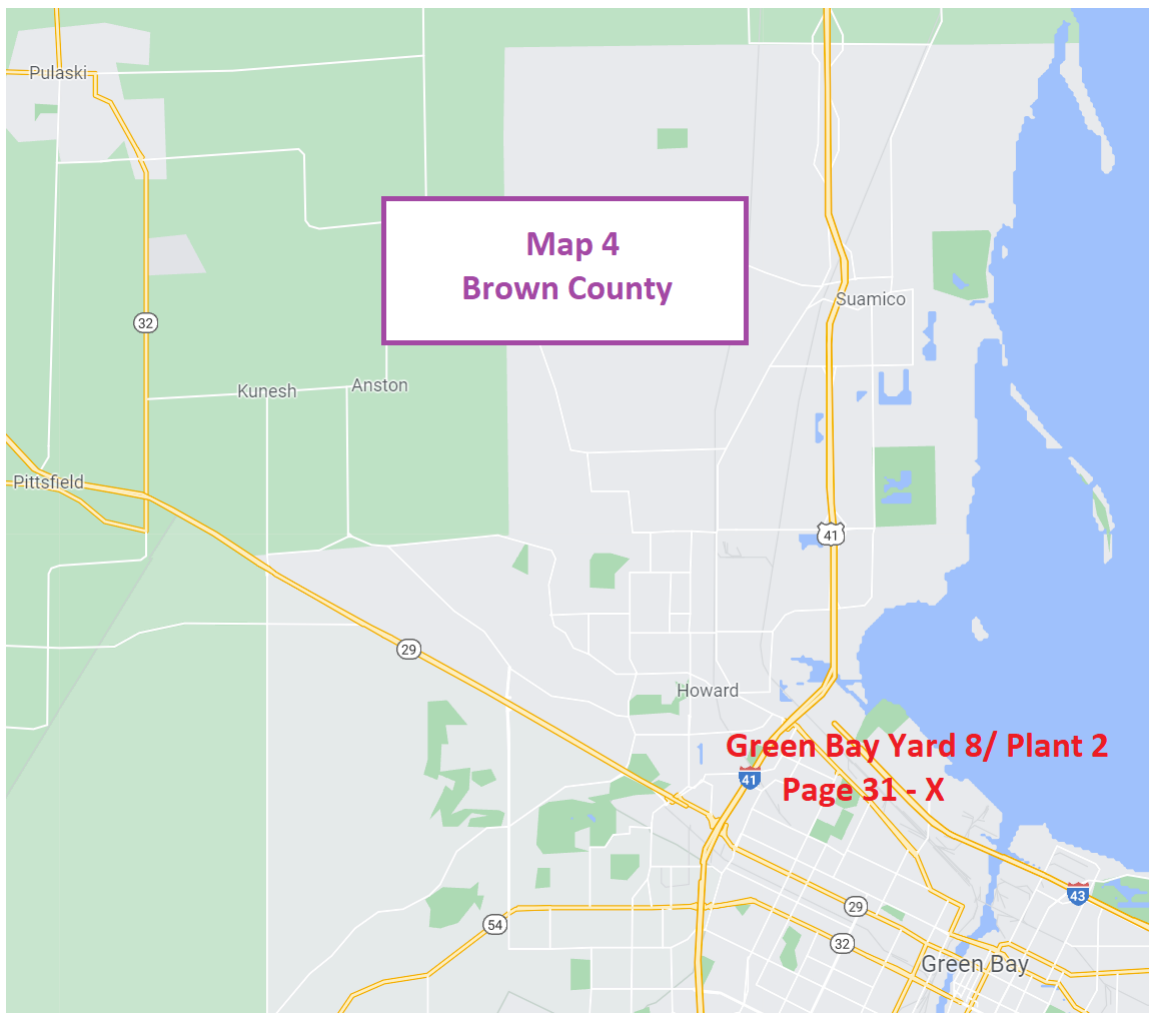
Have a great 2022 construction season.

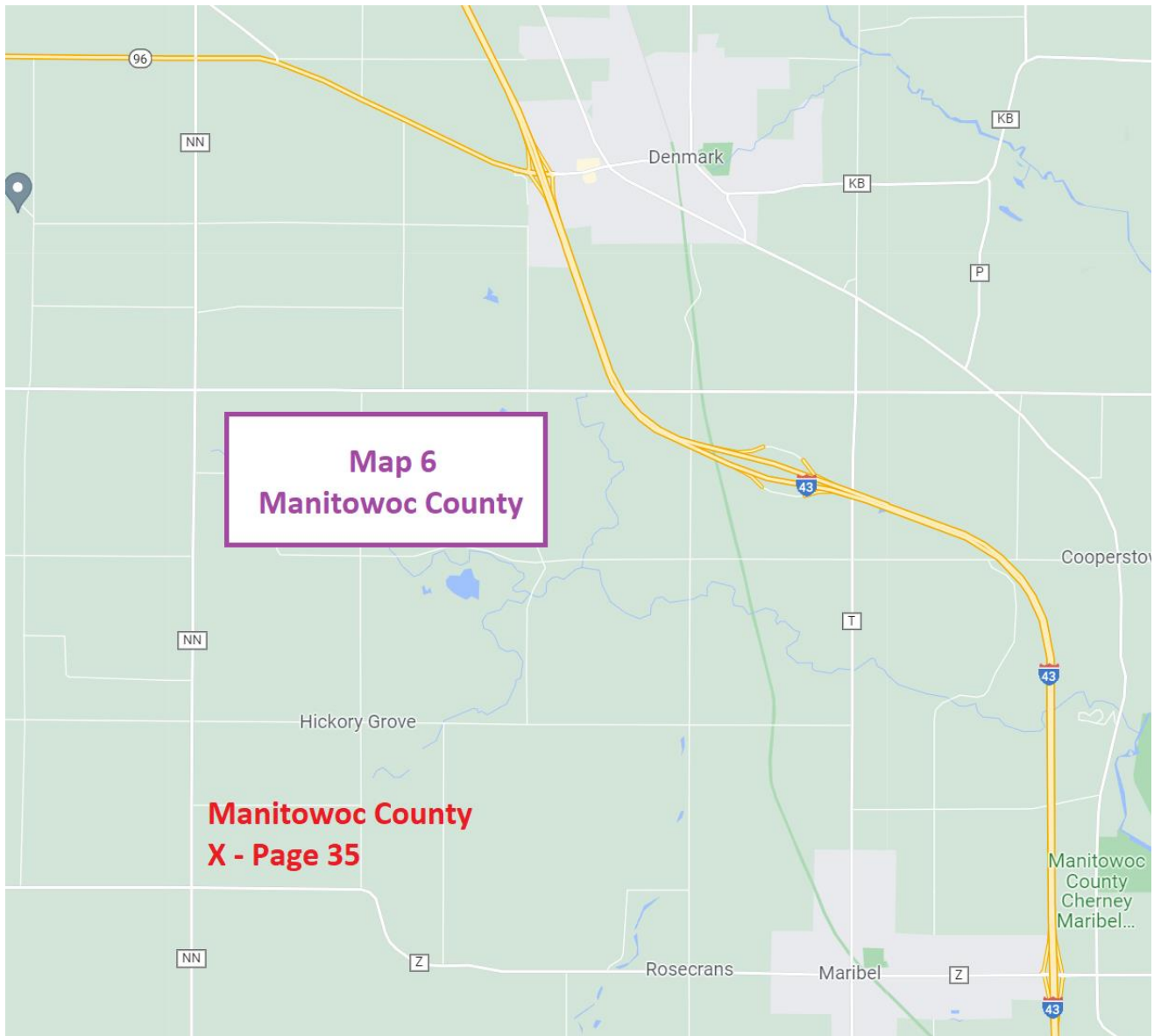
Sincerely,
Peters Concrete Company













PAGE INDEX

	Site No.	Price Page	Map Page
Porterfield Pit			
Crivitz Quarry	22756	2	1
Porterfield Pit	22753	4	3
Marinette/Plant 4	22704	6	5
Peters-Peshtigo (Formerly Biundo) Quarry	22737	8	7
Peters-Coleman (Formerly Noll) Pit	22748	10	9
Caelwaerts Quarry	22750	12	11
Rouer Quarry	22733	14	13
Gillett Quarry	22730	16	15
Swaer Sand Pit	22735	18	17
Krueger Quarry	22706	20	19
Snyder Quarry	22734	22	21
Foster Sand Pit	22729	24	23
Gohr Quarry	22793	26	25
Chase Quarry	22705	28	27
Bonduel/Wash Plant 5/Przybyski Pit	22710	30	29
Wash Plant/Yard 8	22708	32	31
Green Bay/Plant 2	22702		31
Brussels Pit	22786	34	33
Cooperstown Pit	22785	36	35
Deerview Yard	22762	38	37
List of Quarries/Pits			



PETERS CONCRETE COMPANY

Main Office / Plant

1516 Atkinson Drive
Green Bay, WI 54303
Phone (920) 494-3700
Fax (920) 494-5475

Marinette Plant

1604 W. Cleveland Ave.
Marinette, WI 54143
Phone 1-800-735-1505
Fax (715) 732-9028

Bonduel Plant

N3601 State Highway 47
Bonduel, WI 54107
Phone (715) 758-2363
Fax (715) 758-6362

www.petersconcrete.com

Ready Mixed Concrete • Excavation • Heavy & Highway • Sewer & Water • Crushing & Aggregates

Material List

<u>Code</u>	<u>Material</u>	<u>Unit</u>
802	Clay Fill	Yards
803	Sand Fill	Yards
804	Fill	Yards
808	Washed Sand	Tons
809	Pond Sand	Yards
810	Mason Sand (tons)	Tons
811	Screened Sand	Tons
817	Backfill	Yards
818	Backfill, Granular	Yards
819	Backfill, Structural	Yards
820	Backfill, MSE Wall	Yards
824	5/8" Screened (Stone Chips)	Tons
825	3/4" Screened Stone	Tons
826	1 1/2" Screened Stone	Tons
827	Screened Breaker	Tons
828	3" Crushed	Tons
830	3/8" Stone/Crusher Dust	Tons
831	3/4" Crushed Stone	Tons
832	1 1/4" Crushed stone	Tons
833	Break Run	Tons
834	Pit Run	Tons
837	Rip Rap	Tons
838	Rip Rap - Light	Tons
839	Rip Rap - Medium	Tons
840	Rip Rap - Heavy/Large	Tons
841	Shot Stone	Tons
842	Flag Stone	Tons
843	3/4" Crushed Gravel	Tons

An Equal Opportunity Employer

844	1 1/4" Crushed Gravel	Tons
845	Recycled Asphalt	Tons
846	1 1/4" Recycled Concrete	Tons
849	3/4" Mississippi River Stone	Tons
850	1 1/2" Mississippi River Stone	Tons
851	Big Round Stone	Tons
854	Top Soil	Yards
855	Pulverized Top Soil	Yards
856	Screened Top Soil	Yards
867	Peastone	Tons
868	3/4" Washed Stone	Tons
869	1 1/2" Washed Stone	Tons
880	Mulch - Red	Yards
882	Mulch - Natural Color	Yards

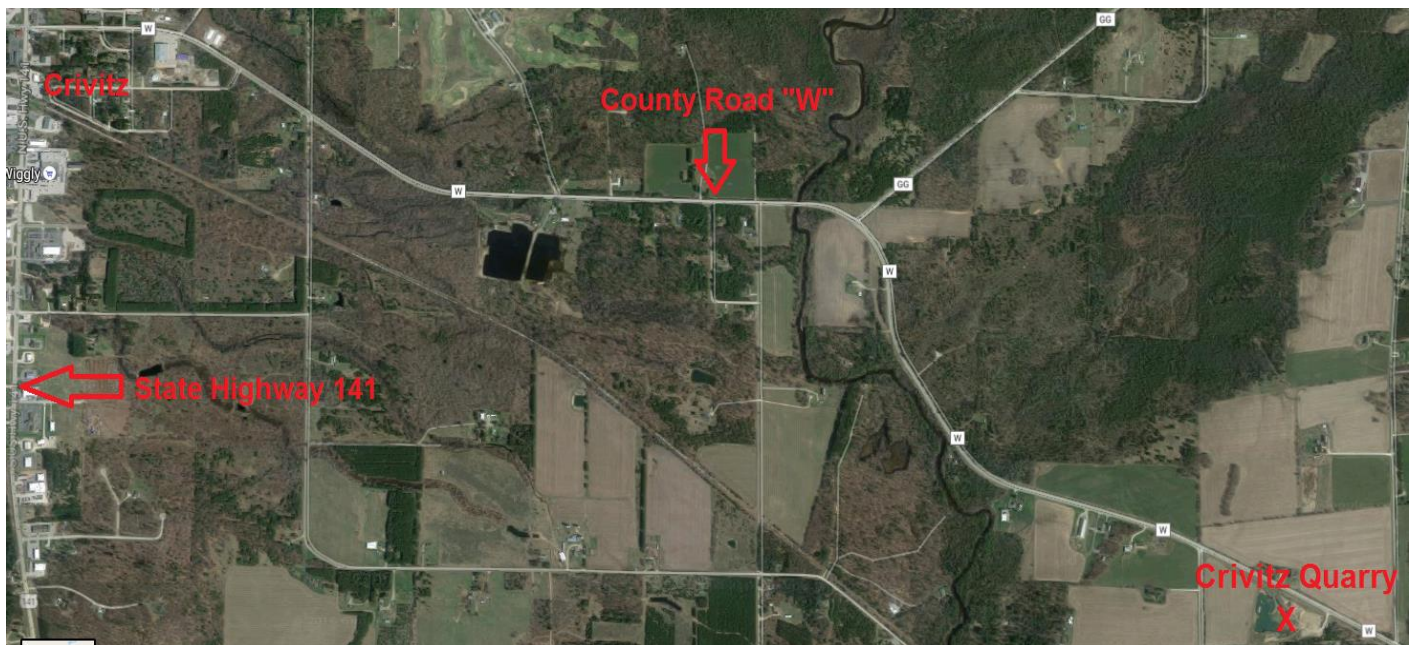
All Prices Are Per Ton (unless otherwise noted), FOB, and Do Not Include Tax.

All Prices Are Based on Full Load Quantities.

A Minimum charge of \$25.00 applies to all material loaded by Peters Concrete Co.

All Prices Are Subject to Change Without Notice.

An Equal Opportunity Employer



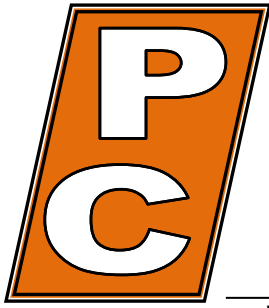
X Peters Site

Crivitz Area

<u>Site</u>	Crivitz Quarry
<u>ID #</u>	22756
<u>Address</u>	6985 County Road W
<u>Municipality</u>	Crivitz
<u>Zip</u>	54114

General Directions

East on County Rd W from 141/Crivitz 3.4 miles



PETERS CONCRETE COMPANY

Main Office / Plant

1516 Atkinson Drive
Green Bay, WI 54303
Phone (920) 494-3700
Fax (920) 494-5475

Marinette Plant

1604 W. Cleveland Ave.
Marinette, WI 54143
Phone 1-800-735-1505
Fax (715) 732-9028

Bonduel Plant

N3601 State Highway 47
Bonduel, WI 54107
Phone (715) 758-2363
Fax (715) 758-6362

www.petersconcrete.com

Ready Mixed Concrete · Excavation · Heavy & Highway · Sewer & Water · Crushing & Aggregates

Crivitz Area

2022 Material Prices

Prices Effective March 1, 2022

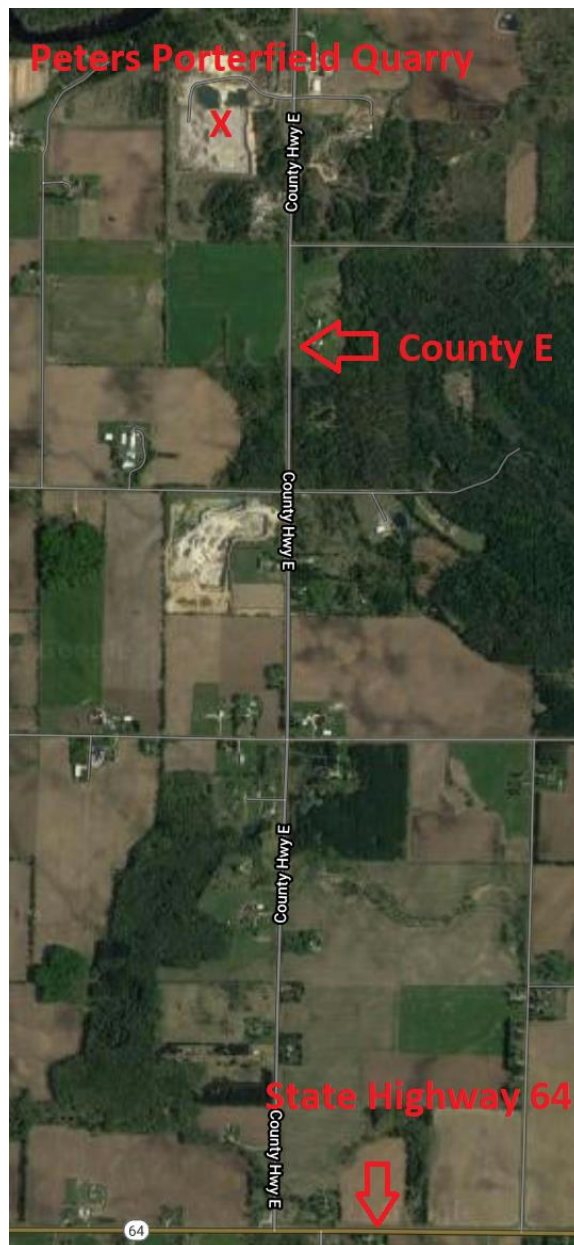
<u>Code</u>	<u>Material</u>	<u>Crivitz Quarry</u> <u>22756</u>
802	Clay Fill	\$3.50/Yard
831	3/4" Crushed Stone	\$6.50
832	1 1/4" Crushed Stone	\$6.50
819	Stone Dust	\$6.00
833	Breaker Run	\$6.50
825	3/4" Screened Stone	\$7.50
826	1 1/2" Screened Stone	\$7.50
827	3" Screened Breaker	\$7.75

All Prices Are Per Ton (unless otherwise noted), FOB, and Do Not Include Tax.

All Prices Are Based on Full Load Quantities.

A Minimum charge of \$25.00 applies to all material loaded by Peters Concrete Co.

All Prices Are Subject to Change Without Notice.



Porterfield Area

Site Peters Porterfield Quarry

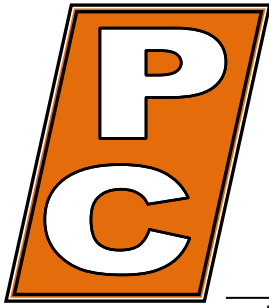
ID # 22732

Address County Road E

Municipality Porterfield **County:** Marinette

General Directions:

North on County Road E from Highway 64, 2.4 Miles, West side of road.



PETERS CONCRETE COMPANY

Main Office / Plant

1516 Atkinson Drive
Green Bay, WI 54303
Phone (920) 494-3700
Fax (920) 494-5475

Marinette Plant

1604 W. Cleveland Ave.
Marinette, WI 54143
Phone 1-800-735-1505
Fax (715) 732-9028

Bonduel Plant

N3601 State Highway 47
Bonduel, WI 54107
Phone (715) 758-2363
Fax (715) 758-6362

www.petersconcrete.com

Ready Mixed Concrete · Excavation · Heavy & Highway · Sewer & Water · Crushing & Aggregates

Porterfield Area

2022 Material Prices

Prices Effective March 1, 2022

<u>Code</u>	<u>Material</u>	<u>Peters-Porterfield Quarry</u> <u>22732</u>
802	Clay Fill	\$3.50/Yard
831	3/4" Crushed Stone	\$7.40
832	1 1/4" Crushed Stone	\$7.40
819	Stone Dust	\$8.00
833	Breaker Run	\$7.15
825	3/4" Screened Stone	\$8.00
826	1 1/2" Screened Stone	\$8.00
827	3" Screened Breaker	\$8.00
838	Light Rip Rap	\$16.00
839	Med & Heavy Rip Rap	\$18.00
840	Heavy Rip Rap	\$18.00
845	Black Top Recycled	\$10.40

All Prices Are Per Ton (unless otherwise noted), FOB, and Do Not Include Tax.

All Prices Are Based on Full Load Quantities.

A Minimum charge of \$25.00 applies to all material loaded by Peters Concrete Co.

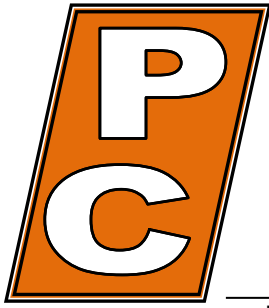
All Prices Are Subject to Change Without Notice.



X Peters Site

Marinette Area

<u>Site</u>	Marinette Plant
<u>ID #</u>	22704
<u>Address</u>	W1604 Cleveland Ave
<u>Municipality</u>	Marinette
<u>Zip</u>	54143
<u>General Directions:</u>	North on Roosevelt Road from 41; West on W. Cleveland Ave.



PETERS CONCRETE COMPANY

Main Office / Plant

1516 Atkinson Drive
Green Bay, WI 54303
Phone (920) 494-3700
Fax (920) 494-5475

Marinette Plant

1604 W. Cleveland Ave.
Marinette, WI 54143
Phone 1-800-735-1505
Fax (715) 732-9028

Bonduel Plant

N3601 State Highway 47
Bonduel, WI 54107
Phone (715) 758-2363
Fax (715) 758-6362

www.petersconcrete.com

Ready Mixed Concrete · Excavation · Heavy & Highway · Sewer & Water · Crushing & Aggregates

Marinette Area

2022 Material Prices

Prices Effective March 1, 2022

<u>Code</u>	<u>Material</u>	<u>Marinette Plant/Plant 4</u> <u>22704</u>
808	Washed Sand	\$15.00
868	3/4" Washed Stone	\$12.00
869	1 1/2" Washed Stone	\$12.00
831	3/4" Crushed Stone	\$10.25
832	1 1/4" Crushed Stone	\$10.25
825	3/4" Screened Stone	\$11.00
826	1 1/2" Screened Stone	\$11.00
846	1 1/4" Recycled Concrete	\$7.00
	Concrete Blocks/Barriers	Call for price

All Prices Are Per Ton (unless otherwise noted), FOB, and Do Not Include Tax.

All Prices Are Based on Full Load Quantities.

A Minimum charge of \$25.00 applies to all material loaded by Peters Concrete Co.

All Prices Are Subject to Change Without Notice.



X Peters Site

Peshtigo Area

Site Peters-Peshtigo (Formerly Biundo) Quarry

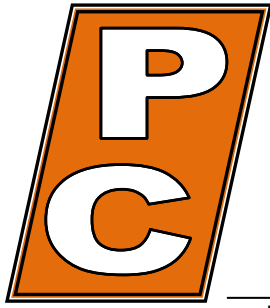
ID # 22737

Address Vernon Hills Drive

Municipality Peshtigo

Zip 54157

General Directions: West on County Rd M from 41, South on Vernon Hills Drive



PETERS CONCRETE COMPANY

Main Office / Plant

1516 Atkinson Drive
Green Bay, WI 54303
Phone (920) 494-3700
Fax (920) 494-5475

Marinette Plant

1604 W. Cleveland Ave.
Marinette, WI 54143
Phone 1-800-735-1505
Fax (715) 732-9028

Bonduel Plant

N3601 State Highway 47
Bonduel, WI 54107
Phone (715) 758-2363
Fax (715) 758-6362

www.petersconcrete.com

Ready Mixed Concrete · Excavation · Heavy & Highway · Sewer & Water · Crushing & Aggregates

Peshtigo Area

2022 Material Prices

Prices Effective March 1, 2022

<u>Code</u>	<u>Material</u>	<u>Peters-Peshtigo Quarry</u> <u>22737</u>
802	Clay Fill	\$3.50/Yard
831	3/4" Crushed Stone	\$7.00
832	1 1/4" Crushed Stone	\$7.00
819	Stone Dust	\$7.00
830	Stone Chips	\$7.50
833	Breaker Run	\$6.50
825	3/4" Screened Stone	\$7.75
826	1 1/2" Screened Stone	\$7.75
827	3" Screened Breaker	\$7.75
838	Light Rip Rap	\$16.00
839	Medium Rip Rap	\$18.00
840	Heavy Rip Rap	\$18.00

All Prices Are Per Ton (unless otherwise noted), FOB, and Do Not Include Tax.

All Prices Are Based on Full Load Quantities.

A Minimum charge of \$25.00 applies to all material loaded by Peters Concrete Co.

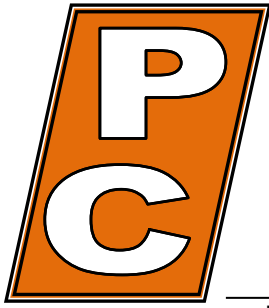
All Prices Are Subject to Change Without Notice.



X Peters Site

Coleman Area

<u>Site</u>	Peters-Coleman (Formerly Noll) Pit
<u>ID #</u>	22749
<u>Address</u>	3474 N. 9 th Road
<u>Municipality</u>	Coleman
<u>Zip</u>	54112
<u>General Directions</u>	East on E .Main/County Road "B" from 141; North on N. 9th Road



PETERS CONCRETE COMPANY

Main Office / Plant

1516 Atkinson Drive
Green Bay, WI 54303
Phone (920) 494-3700
Fax (920) 494-5475

Marinette Plant

1604 W. Cleveland Ave.
Marinette, WI 54143
Phone 1-800-735-1505
Fax (715) 732-9028

Bonduel Plant

N3601 State Highway 47
Bonduel, WI 54107
Phone (715) 758-2363
Fax (715) 758-6362

www.petersconcrete.com

Ready Mixed Concrete · Excavation · Heavy & Highway · Sewer & Water · Crushing & Aggregates

Coleman Area

2022 Material Prices

Prices Effective March 1, 2022

<u>Code</u>	<u>Material</u>	<u>Peters-Coleman Pit</u> <u>22749</u>
803	Sand Fill	\$4.50/Yard
804	Pond Sand	\$4.00/Yard
808	Washed Sand	\$11.00
868	3/4" Washed Stone	\$8.50
869	1 1/2" Washed Stone	\$8.50

All Prices Are Per Ton (unless otherwise noted), FOB, and Do Not Include Tax.

All Prices Are Based on Full Load Quantities.

A Minimum charge of \$25.00 applies to all material loaded by Peters Concrete Co.

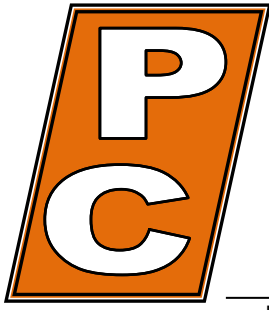
All Prices Are Subject to Change Without Notice.



X Peters Site

Oconto Area

<u>Site</u>	Caelwaerts Quarry
<u>ID #</u>	22750
<u>Address</u>	Maple Grove School Road
<u>Municipality</u>	Oconto
<u>Zip</u>	54153
<u>General Directions:</u>	East on Maple Grove School Road from 41



PETERS CONCRETE COMPANY

Main Office / Plant

1516 Atkinson Drive
Green Bay, WI 54303
Phone (920) 494-3700
Fax (920) 494-5475

Marinette Plant

1604 W. Cleveland Ave.
Marinette, WI 54143
Phone 1-800-735-1505
Fax (715) 732-9028

Bonduel Plant

N3601 State Highway 47
Bonduel, WI 54107
Phone (715) 758-2363
Fax (715) 758-6362

www.petersconcrete.com

Ready Mixed Concrete · Excavation · Heavy & Highway · Sewer & Water · Crushing & Aggregates

Oconto Area

2022 Material Prices

Prices Effective March 1, 2022

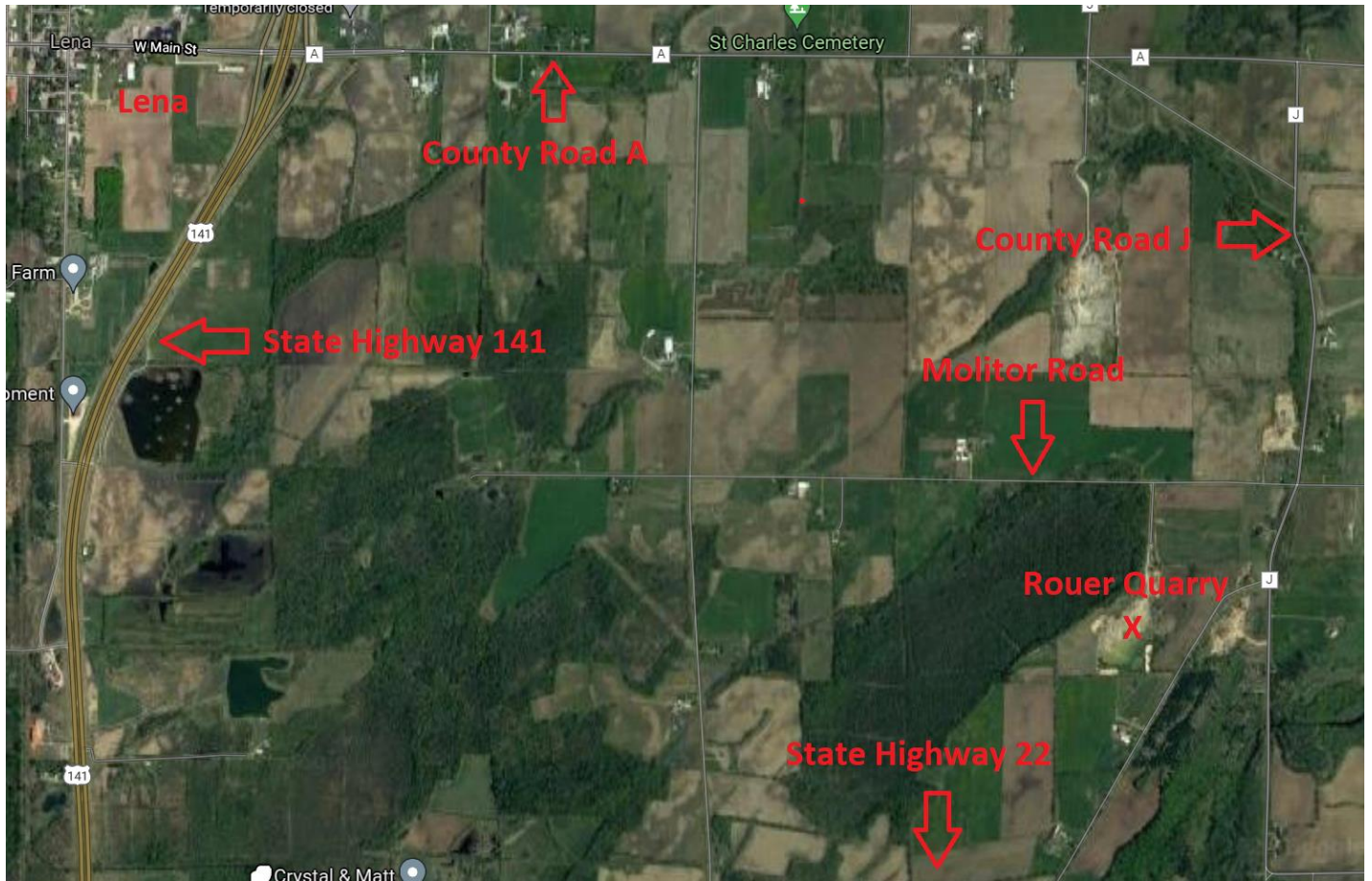
<u>Code</u>	<u>Material</u>	<u>Caelwaerts Quarry</u> <u>22750</u>
802	Clay Fill	\$3.50/Yard
854	Top Soil	\$8.00/ Yard
831	3/4" Crushed Stone	\$7.00
832	1 1/4" Crushed Stone	\$7.00
819	Stone Dust	\$7.00
830	Stone Chips	\$7.50
833	Breaker Run	\$6.50
825	3/4" Screened Stone	\$7.75
826	1 1/2" Screened Stone	\$7.75
827	3" Screened Breaker	\$7.75
838	Light Rip Rap	\$16.00
839	Medium Rip Rap	\$18.00
840	Heavy Rip Rap	\$18.00

All Prices Are Per Ton (unless otherwise noted), FOB, and Do Not Include Tax.

All Prices Are Based on Full Load Quantities.

A Minimum charge of \$25.00 applies to all material loaded by Peters Concrete Co.

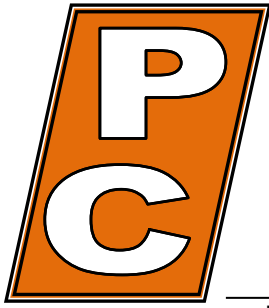
All Prices Are Subject to Change Without Notice.



Lena Area

<u>Site</u>	Rouer Quarry	
<u>ID #</u>	22733	
<u>Address</u>	4601 Molitor Road	
<u>Municipality</u>	Oconto	<u>County:</u> Oconto
<u>Zip</u>	54153	

General Directions: Either east on County A from Highway 141; south on County J from County A; west on Molitor Road from County J; or North on J from State Highway 22; west from County J on Molitor Road.



PETERS CONCRETE COMPANY

Main Office / Plant

1516 Atkinson Drive
Green Bay, WI 54303
Phone (920) 494-3700
Fax (920) 494-5475

Marinette Plant

1604 W. Cleveland Ave.
Marinette, WI 54143
Phone 1-800-735-1505
Fax (715) 732-9028

Bonduel Plant

N3601 State Highway 47
Bonduel, WI 54107
Phone (715) 758-2363
Fax (715) 758-6362

www.petersconcrete.com

Ready Mixed Concrete · Excavation · Heavy & Highway · Sewer & Water · Crushing & Aggregates

Lena Area

2022 Material Prices

Prices Effective March 1, 2022

<u>Code</u>	<u>Material</u>	<u>Rouer Quarry</u> <u>22733</u>
802	Clay Fill	\$3.50/Yard
831	3/4" Crushed Stone	\$7.40
832	1 1/4" Crushed Stone	\$7.40
819	Stone Dust	\$8.00
833	Breaker Run	\$7.15
825	3/4" Screened Stone	\$8.00
826	1 1/2" Screened Stone	\$8.00
827	3" Screened Breaker	\$8.00
838	Light Rip Rap	\$16.00
845	Black Top Recycled	\$10.40

All Prices Are Per Ton (unless otherwise noted), FOB, and Do Not Include Tax.

All Prices Are Based on Full Load Quantities.

A Minimum charge of \$25.00 applies to all material loaded by Peters Concrete Co.

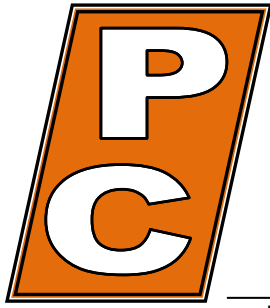
All Prices Are Subject to Change Without Notice.



Gillett Area

<u>Site</u>	Gillett Quarry	
<u>ID #</u>	22730	
<u>Address</u>	10326 Valley Line Road	
<u>Municipality</u>	Gillett	<u>County:</u> Oconto
<u>Zip</u>	54124	

General Directions: North on County G from Highway 32; west on Valley Line Road from County G; west on Valley Line Road from County G.



PETERS CONCRETE COMPANY

Main Office / Plant

1516 Atkinson Drive
Green Bay, WI 54303
Phone (920) 494-3700
Fax (920) 494-5475

Marinette Plant

1604 W. Cleveland Ave.
Marinette, WI 54143
Phone 1-800-735-1505
Fax (715) 732-9028

Bonduel Plant

N3601 State Highway 47
Bonduel, WI 54107
Phone (715) 758-2363
Fax (715) 758-6362

www.petersconcrete.com

Ready Mixed Concrete · Excavation · Heavy & Highway · Sewer & Water · Crushing & Aggregates

Lena Area

2022 Material Prices

Prices Effective March 1, 2022

<u>Code</u>	<u>Material</u>	<u>Gillett Quarry</u> <u>22730</u>
802	Clay Fill	\$3.50/Yard
831	3/4" Crushed Stone	\$7.40
832	1 1/4" Crushed Stone	\$7.40
819	Stone Dust	\$8.00
833	Breaker Run	\$7.15
825	3/4" Screened Stone	\$8.00
826	1 1/2" Screened Stone	\$8.00
827	3" Screened Breaker	\$8.00
838	Light Rip Rap	\$16.00
839	Medium Rip Rap	\$18.00
840	Heavy Rip Rap	\$18.00
845	Black Top Recycled	\$10.40

All Prices Are Per Ton (unless otherwise noted), FOB, and Do Not Include Tax.

All Prices Are Based on Full Load Quantities.

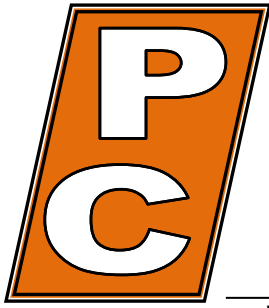
A Minimum charge of \$25.00 applies to all material loaded by Peters Concrete Co.

All Prices Are Subject to Change Without Notice.



Oconto Area

<u>Site</u>	Swear Sand Pit	
<u>ID #</u>	22735	
<u>Address</u>	2850 Frog Pond Road	
<u>Municipality</u>	Oconto	<u>County:</u> Oconto
<u>Zip</u>	54153	
<u>General Directions:</u>	West on Frog Pond Road from Highway 41	



PETERS CONCRETE COMPANY

Main Office / Plant

1516 Atkinson Drive
Green Bay, WI 54303
Phone (920) 494-3700
Fax (920) 494-5475

Marinette Plant

1604 W. Cleveland Ave.
Marinette, WI 54143
Phone 1-800-735-1505
Fax (715) 732-9028

Bonduel Plant

N3601 State Highway 47
Bonduel, WI 54107
Phone (715) 758-2363
Fax (715) 758-6362

www.petersconcrete.com

Ready Mixed Concrete · Excavation · Heavy & Highway · Sewer & Water · Crushing & Aggregates

Oconto Area

2022 Material Prices

Prices Effective March 1, 2022

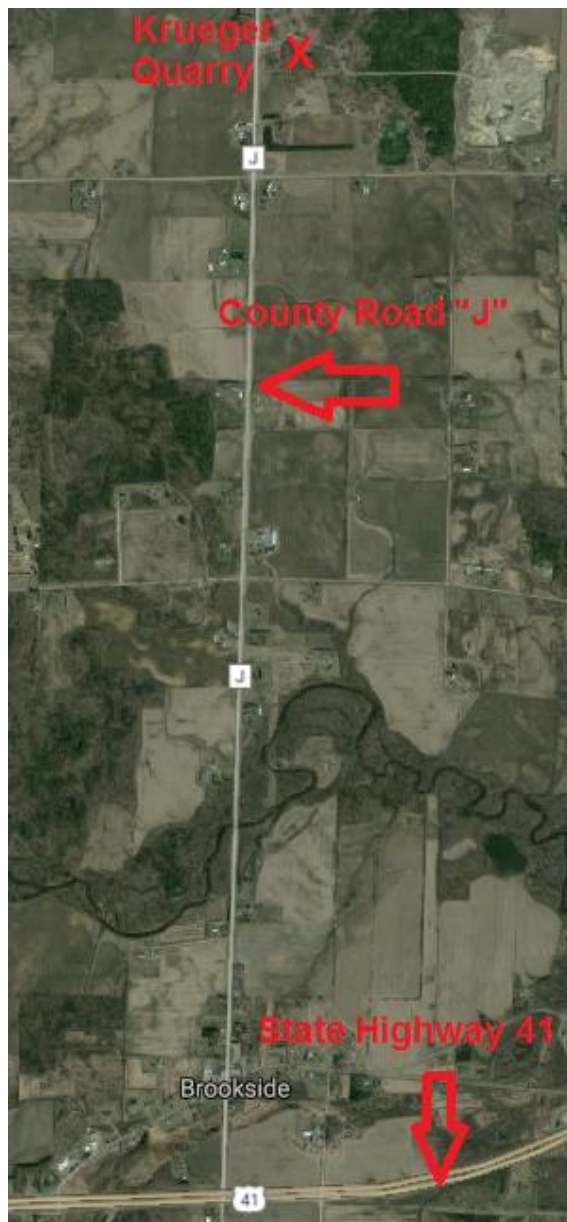
<u>Code</u>	<u>Material</u>	<u>Swear Sand Pit</u> <u>22735</u>
803	Fill Sand	\$4.50/Yard
854	Black Top	\$11.00/Yard

All Prices Are Per Ton (unless otherwise noted), FOB, and Do Not Include Tax.

All Prices Are Based on Full Load Quantities.

A Minimum charge of \$25.00 applies to all material loaded by Peters Concrete Co.

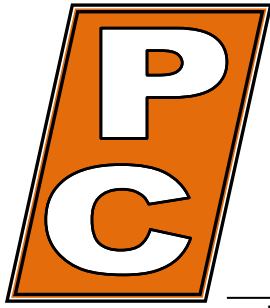
All Prices Are Subject to Change Without Notice.



X Peters Site

Abrams Area

<u>Site</u>	Krueger Quarry
<u>ID #</u>	22706
<u>Address</u>	4570 County Road J
<u>Municipality</u>	Oconto
<u>Zip</u>	54153
<u>General Directions:</u>	North on County Road "J" from 41



PETERS CONCRETE COMPANY

Main Office / Plant

1516 Atkinson Drive
Green Bay, WI 54303
Phone (920) 494-3700
Fax (920) 494-5475

Marinette Plant

1604 W. Cleveland Ave.
Marinette, WI 54143
Phone 1-800-735-1505
Fax (715) 732-9028

Bonduel Plant

N3601 State Highway 47
Bonduel, WI 54107
Phone (715) 758-2363
Fax (715) 758-6362

www.petersconcrete.com

Ready Mixed Concrete · Excavation · Heavy & Highway · Sewer & Water · Crushing & Aggregates

Oconto Area

2022 Material Prices

Prices Effective March 1, 2022

<u>Code</u>	<u>Material</u>	<u>Krueger Quarry</u> <u>22706</u>
802	Clay Fill	\$3.50/Yard
854	Top Soil	\$8.00/ Yard
831	3/4" Crushed Stone	\$7.00
832	1 1/4" Crushed Stone	\$7.00
819	Stone Dust	\$7.00
830	Stone Chips	\$8.00
833	Breaker Run	\$6.50
825	3/4" Screened Stone	\$7.75
826	1 1/2" Screened Stone	\$7.75
827	3" Screened Breaker	\$7.75
838	Light Rip Rap	\$16.00
839	Medium Rip Rap	\$18.00
840	Heavy Rip Rap	\$18.00
846	3/4, 1 1/4, Breaker Run Recycled Concrete	\$6.50
845	Recycled Black Top	\$8.00

All Prices Are Per Ton (unless otherwise noted), FOB, and Do Not Include Tax.

All Prices Are Based on Full Load Quantities.

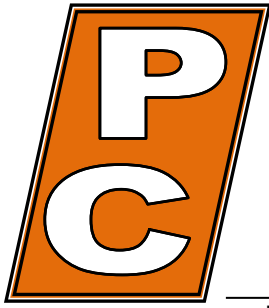
A Minimum charge of \$25.00 applies to all material loaded by Peters Concrete Co.

All Prices Are Subject to Change Without Notice.



Little Suamico Area

<u>Site</u>	Snyder Quarry	
<u>ID #</u>	22734	
<u>Address</u>	2826 County Road S	
<u>Municipality</u>	Little Suamico	<u>County:</u> Oconto
<u>Zip</u>	54141	
<u>General Directions:</u>	East on County Road "S" from 141/41	



PETERS CONCRETE COMPANY

Main Office / Plant

1516 Atkinson Drive
Green Bay, WI 54303
Phone (920) 494-3700
Fax (920) 494-5475

Marinette Plant

1604 W. Cleveland Ave.
Marinette, WI 54143
Phone 1-800-735-1505
Fax (715) 732-9028

Bonduel Plant

N3601 State Highway 47
Bonduel, WI 54107
Phone (715) 758-2363
Fax (715) 758-6362

www.petersconcrete.com

Ready Mixed Concrete · Excavation · Heavy & Highway · Sewer & Water · Crushing & Aggregates

Little Suamico Area

2022 Material Prices

Prices Effective March 1, 2022

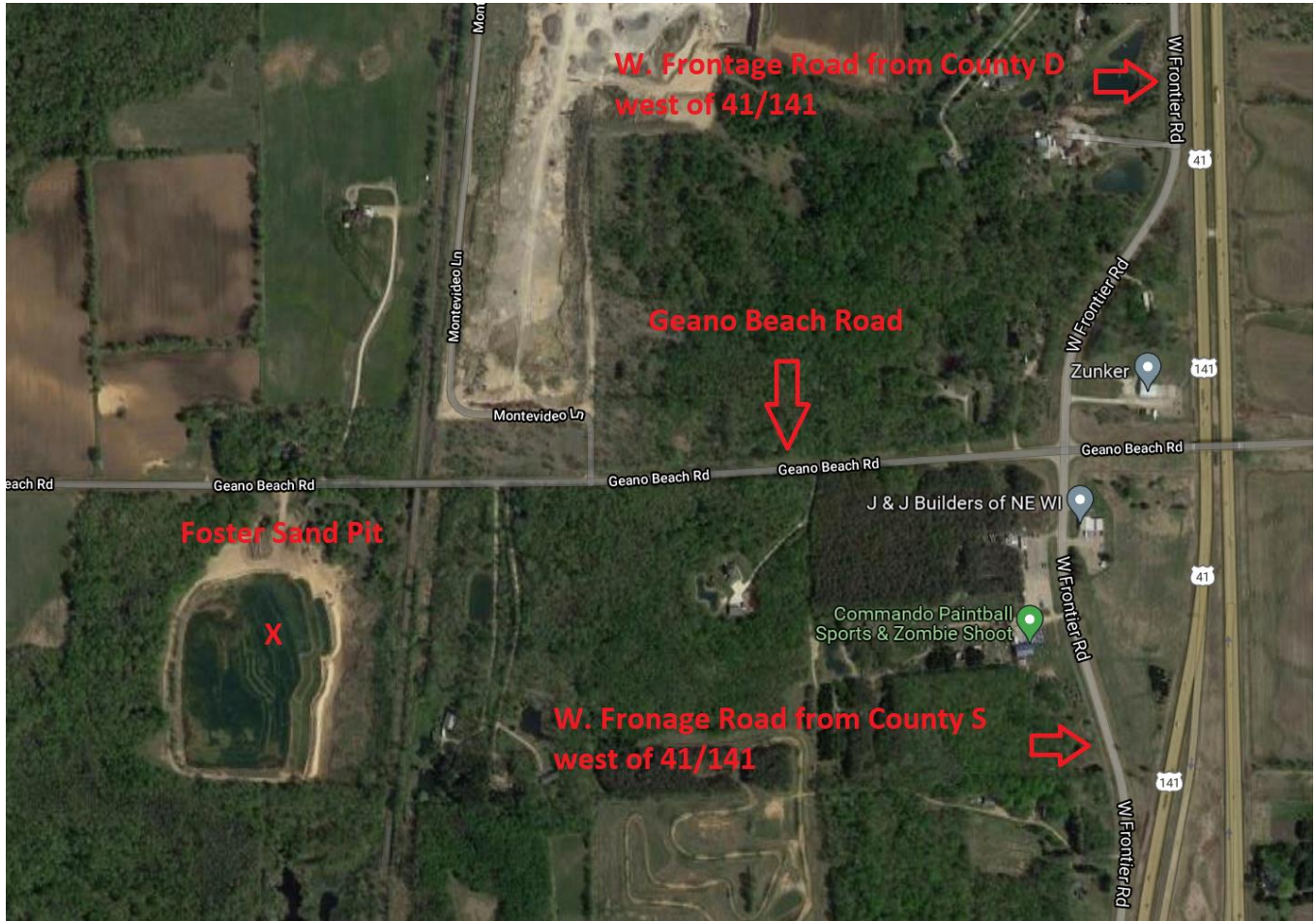
<u>Code</u>	<u>Material</u>	<u>Snyder Quarry</u> <u>22734</u>
831	3/4" Crushed Stone	\$7.40
832	1 1/4" Crushed Stone	\$7.40
819	Stone Dust	\$8.00
833	Breaker Run	\$7.15
825	3/4" Screened Stone	\$8.00
826	1 1/2" Screened Stone	\$8.00
827	3" Screened Breaker	\$8.00
838	Light Rip Rap	\$16.00
845	Black Top Recycled	\$10.40

All Prices Are Per Ton (unless otherwise noted), FOB, and Do Not Include Tax.

All Prices Are Based on Full Load Quantities.

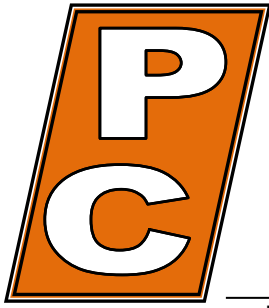
A Minimum charge of \$25.00 applies to all material loaded by Peters Concrete Co.

All Prices Are Subject to Change Without Notice.



Abrams Area

<u>Site</u>	Foster Sand Pit	
<u>ID #</u>	22729	
<u>Address</u>	5997 Geano Beach Road	
<u>Municipality</u>	Abrams	<u>County:</u> Oconto
<u>Zip</u>	54101	
<u>General Directions:</u>	Either South on W. Frontage Road on County D from 41/141 or North on W. Frontage Road on County S from 41/141, to Geano Beach Road, West on Geano Beach Road.	



PETERS CONCRETE COMPANY

Main Office / Plant

1516 Atkinson Drive
Green Bay, WI 54303
Phone (920) 494-3700
Fax (920) 494-5475

Marinette Plant

1604 W. Cleveland Ave.
Marinette, WI 54143
Phone 1-800-735-1505
Fax (715) 732-9028

Bonduel Plant

N3601 State Highway 47
Bonduel, WI 54107
Phone (715) 758-2363
Fax (715) 758-6362

www.petersconcrete.com

Ready Mixed Concrete · Excavation · Heavy & Highway · Sewer & Water · Crushing & Aggregates

Oconto Area

2022 Material Prices

Prices Effective March 1, 2022

<u>Code</u>	<u>Material</u>	<u>Swear Sand Pit</u> <u>22735</u>
803	Fill Sand	\$4.50/Yard
854	Black Top	\$11.00/Yard

All Prices Are Per Ton (unless otherwise noted), FOB, and Do Not Include Tax.

All Prices Are Based on Full Load Quantities.

A Minimum charge of \$25.00 applies to all material loaded by Peters Concrete Co.

All Prices Are Subject to Change Without Notice.



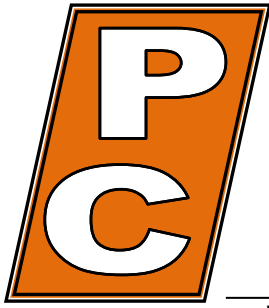
X Peters Site

Pulaski – Abrams - Suamico Area

<u>Site</u>	Gohr Road Quarry
<u>ID #</u>	22793
<u>Address</u>	8658 Gohr Road
<u>Municipality</u>	Krakow
<u>Zip</u>	55137
<u>General Directions</u>	West on County Road S from Highways 41/141; North on County Road C; West on Gohr Road.

Pulaski – Abrams - Suamico Area

An Equal Opportunity Employer



PETERS CONCRETE COMPANY

Main Office / Plant

1516 Atkinson Drive
Green Bay, WI 54303
Phone (920) 494-3700
Fax (920) 494-5475

Marinette Plant

1604 W. Cleveland Ave.
Marinette, WI 54143
Phone 1-800-735-1505
Fax (715) 732-9028

Bonduel Plant

N3601 State Highway 47
Bonduel, WI 54107
Phone (715) 758-2363
Fax (715) 758-6362

www.petersconcrete.com

Ready Mixed Concrete · Excavation · Heavy & Highway · Sewer & Water · Crushing & Aggregates

2022 Material Prices

Prices Effective March 1, 2022

<u>Code</u>	<u>Material</u>	<u>Gohr Quarry</u> <u>22793</u>
802	Clay Fill	\$3.50/Yard
854	Top Soil	\$8.00/ Yard
831	3/4" Crushed Stone	\$7.00
832	1 1/4" Crushed Stone	\$7.00
819	Stone Dust	\$7.00
830	Stone Chips	\$8.00
833	Breaker Run	\$6.50
825	3/4" Screened Stone	\$7.75
826	1 1/2" Screened Stone	\$7.75
827	3" Screened Breaker	\$7.75
838	Light Rip Rap	\$16.00

All Prices Are Per Ton (unless otherwise noted), FOB, and Do Not Include Tax.

All Prices Are Based on Full Load Quantities.

A Minimum charge of \$25.00 applies to all material loaded by Peters Concrete Co.

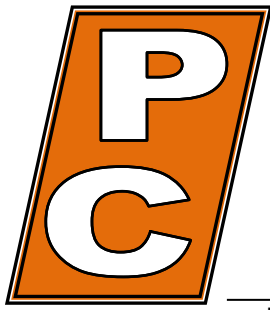
All Prices Are Subject to Change Without Notice.



X Peters Site

Pulaski - Suamico Area

<u>Site</u>	Chase Quarry
<u>ID #</u>	22705
<u>Address</u>	1321 Yurek Road
<u>Municipality</u>	Pulaski
<u>Zip</u>	54162
<u>General Directions</u>	West on County Road "S" from 41/141; North on Yurek Road



PETERS CONCRETE COMPANY

Main Office / Plant

1516 Atkinson Drive
Green Bay, WI 54303
Phone (920) 494-3700
Fax (920) 494-5475

Marinette Plant

1604 W. Cleveland Ave.
Marinette, WI 54143
Phone 1-800-735-1505
Fax (715) 732-9028

Bonduel Plant

N3601 State Highway 47
Bonduel, WI 54107
Phone (715) 758-2363
Fax (715) 758-6362

www.petersconcrete.com

Ready Mixed Concrete · Excavation · Heavy & Highway · Sewer & Water · Crushing & Aggregates

Pulaski - Suamico Area

2022 Material Prices

Prices Effective March 1, 2022

<u>Code</u>	<u>Material</u>	<u>Chase Quarry</u> <u>22705</u>
802	Clay Fill	\$3.50/Yard
854	Top Soil	\$8.00/ Yard
831	3/4" Crushed Stone	\$7.00
832	1 1/4" Crushed Stone	\$7.00
819	Stone Dust	\$7.00
830	Stone Chips	\$8.00
833	Breaker Run	\$6.50
825	3/4" Screened Stone	\$7.75
826	1 1/2" Screened Stone	\$7.75
827	3" Screened Breaker	\$7.75
846	3/4, 1 1/4, Breaker Run Recycled Concrete	\$6.50
845	Recycled Black Top	\$8.00

All Prices Are Per Ton (unless otherwise noted), FOB, and Do Not Include Tax.

All Prices Are Based on Full Load Quantities.

A Minimum charge of \$25.00 applies to all material loaded by Peters Concrete Co.

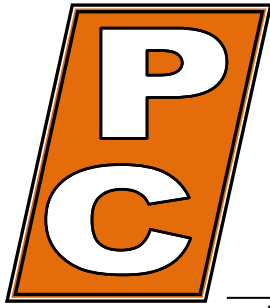
All Prices Are Subject to Change Without Notice.



X Peters Site

Bonduel Area

<u>Site</u>	Bonduel Concrete/Wash Plant 5/Przybylski Pit
<u>ID #</u>	22710
<u>Address</u>	N3601 State Highway 47
<u>Municipality</u>	Bonduel
<u>Zip</u>	54107
<u>General Directions</u>	South on State Highway 14 from 29



PETERS CONCRETE COMPANY

Main Office / Plant
1516 Atkinson Drive
Green Bay, WI 54303
Phone (920) 494-3700
Fax (920) 494-5475

Marinette Plant
1604 W. Cleveland Ave.
Marinette, WI 54143
Phone 1-800-735-1505
Fax (715) 732-9028

Bonduel Plant
N3601 State Highway 47
Bonduel, WI 54107
Phone (715) 758-2363
Fax (715) 758-6362

www.petersconcrete.com

Ready Mixed Concrete · Excavation · Heavy & Highway · Sewer & Water · Crushing & Aggregates

Bonduel Area

2022 Material Prices

Prices Effective March 1, 2022

<u>Code</u>	<u>Material</u>	<u>Bonduel Wash Plant/Plant 5/Przybylski Pit</u> <u>22710</u>
803	Fill Sand	\$4.00/Yard
804	Pond Sand	\$3.00/Yard
808	Washed Sand	\$15.00
868	3/4" Washed Stone	\$12.00
869	1 1/2" Washed Stone	\$12.00
867	Pea Stone	\$12.00
849	3/4" Mississippi River Rock	\$50.00
850	1 1/2" Mississippi River Rock	\$50.00
854	Top Soil	\$13.00/Yard
855	Pulverized Top Soil	\$22.00/Yard
831	3/4" Crushed Stone	\$12.00
832	1 1/4" Crushed Stone	\$12.00
830	Stone Dust	\$12.00
825	3/4" Screened Stone	\$12.75
826	1 1/2" Screened Stone	\$12.75
838	Light Rip Rap	\$22.00
839	Medium Rip Rap	\$22.00
840	Heavy Rip Rap	\$22.00
843	3/4" Crushed Gravel	\$6.25
844	1 1/4" Crushed Gravel	\$6.25
846	1 1/4" Recycled Concrete	\$7.00/Ton
845	Recycled Asphalt	\$8.00/Ton
880	Red Mulch	\$40.00/Yard
881	Dark Brown Mulch	\$40.00/Yard
882	Natural Color Mulch	\$40.00/Yard
	Concrete Blocks/Barriers	Call for price

All Prices Are Per Ton (unless otherwise noted), FOB, and Do Not Include Tax.

All Prices Are Based on Full Load Quantities.

A Minimum charge of \$25.00 applies to all material loaded by Peters Concrete Co.

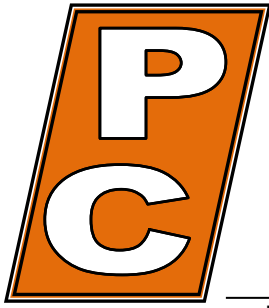
All Prices Are Subject to Change Without Notice.



X Peters Site

Green Bay Area

<u>Sites</u>	Yard/Wash Plant #8
<u>ID #</u>	22708
<u>Address</u>	1516 Atkinson Drive
<u>Municipality</u>	Green Bay
<u>Zip</u>	54303
<u>General Directions</u>	North on Atkinson Drive off Highway I-43 in Green Bay



PETERS CONCRETE COMPANY

Main Office / Plant

1516 Atkinson Drive
Green Bay, WI 54303
Phone (920) 494-3700
Fax (920) 494-5475

Marinette Plant

1604 W. Cleveland Ave.
Marinette, WI 54143
Phone 1-800-735-1505
Fax (715) 732-9028

Bonduel Plant

N3601 State Highway 47
Bonduel, WI 54107
Phone (715) 758-2363
Fax (715) 758-6362

www.petersconcrete.com

Ready Mixed Concrete · Excavation · Heavy & Highway · Sewer & Water · Crushing & Aggregates

Green Bay Area

2022 Material Prices

Prices Effective March 1, 2022

<u>Code</u>	<u>Material</u>	<u>Yard/Wash Plant 8</u> <u>22708</u>
802	Clay Fill	\$4.00/Yard
809	Pond Sand	\$3.00/Yard
808	Washed Sand	\$15.00
868	3/4" Washed Stone	\$12.00
869	1 1/2" Washed Stone	\$12.00
867	Pea Stone	\$12.00
854	Top Soil	\$13.00/Yard
855	Pulverized Top Soil	\$20.00/Yard
831	3/4" Crushed Stone	\$12.25
832	1 1/4" Crushed Stone	\$12.25
819	Stone Dust	\$12.25
830	Stone Chips	\$13.00
833	Breaker Run	\$11.75
825	3/4" Screened Stone	\$13.00
826	1 1/2" Screened Stone	\$13.00
827	3" Screened Breaker	\$13.00
838	Rip Rap - Light	\$22.00
839	Rip Rap – Medium	\$22.00
840	Rip Rap – Heavy/Large	\$22.00
846	1 1/4" Recycled Concrete	\$7.50
845	Recycled Asphalt	\$8.00
	Concrete Blocks/Barriers	Call for price

All Prices Are Per Ton (unless otherwise noted), FOB, and Do Not Include Tax.

All Prices Are Based on Full Load Quantities.

A Minimum charge of \$25.00 applies to all material loaded by Peters Concrete Co.

All Prices Are Subject to Change Without Notice.



X Peters Site

Brussels Area

Sites

Brussels Pit

ID

22786

Address

County Road Y

Municipality

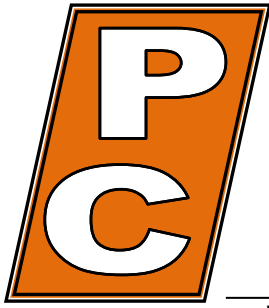
Brussels

Zip

54204

General Directions

South on County Road Y from State Highway 57



PETERS CONCRETE COMPANY

Main Office / Plant

1516 Atkinson Drive
Green Bay, WI 54303
Phone (920) 494-3700
Fax (920) 494-5475

Marinette Plant

1604 W. Cleveland Ave.
Marinette, WI 54143
Phone 1-800-735-1505
Fax (715) 732-9028

Bonduel Plant

N3601 State Highway 47
Bonduel, WI 54107
Phone (715) 758-2363
Fax (715) 758-6362

www.petersconcrete.com

Ready Mixed Concrete · Excavation · Heavy & Highway · Sewer & Water · Crushing & Aggregates

Brussels Area

Prices

Prices Effective March 1, 2022

<u>Code</u>	<u>Material</u>	<u>Brussels Pit</u> <u>22786</u>
803	Fill Sand	\$5.00/Yard
868	3/4" Washed Stone	\$8.50
869	1 1/2" Washed Stone	\$8.50
843	3/4" Crushed Gravel	\$6.25
844	1 1/4" Crushed Gravel	\$6.25

All Prices Are Per Ton (unless otherwise noted), FOB, and Do Not Include Tax.

All Prices Are Based on Full Load Quantities.

A Minimum charge of \$25.00 applies to all material loaded by Peters Concrete Co.

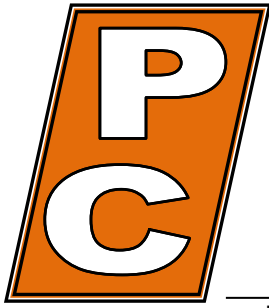
All Prices Are Subject to Change Without Notice.



X Peters Site

Maribel Area

<u>Site</u>	Cooperstown Pit
<u>ID #</u>	22785
<u>Address</u>	County Road NN
<u>Municipality</u>	Maribel
<u>Zip</u>	54227
<u>General Directions</u>	West on State Highway 96 from Highway I-43; South on County Road NN.



PETERS CONCRETE COMPANY

Main Office / Plant

1516 Atkinson Drive
Green Bay, WI 54303
Phone (920) 494-3700
Fax (920) 494-5475

Marinette Plant

1604 W. Cleveland Ave.
Marinette, WI 54143
Phone 1-800-735-1505
Fax (715) 732-9028

Bonduel Plant

N3601 State Highway 47
Bonduel, WI 54107
Phone (715) 758-2363
Fax (715) 758-6362

www.petersconcrete.com

Ready Mixed Concrete · Excavation · Heavy & Highway · Sewer & Water · Crushing & Aggregates

Maribel Area

2022 Material Prices

Prices Effective March 1, 2022

<u>Code</u>	<u>Material</u>	<u>Cooperstown Pit</u> <u>22785</u>
803	Fill Sand	\$5.00/Yard
843	3/4" Crushed Gravel	\$6.25
844	1 1/4" Crushed Gravel	\$6.25

All Prices Are Per Ton (unless otherwise noted), FOB, and Do Not Include Tax.

All Prices Are Based on Full Load Quantities.

A Minimum charge of \$25.00 applies to all material loaded by Peters Concrete Co.

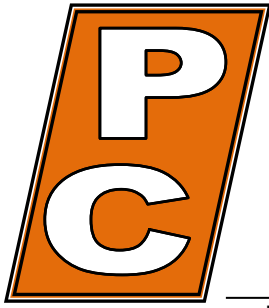
All Prices Are Subject to Change Without Notice.



X Peters Site

Appleton Area

<u>Site</u>	Deerview Yard
<u>ID #</u>	22762
<u>Address</u>	W. Deerview Drive
<u>Municipality</u>	Appleton
<u>Zip</u>	54913
<u>General Directions</u>	North (about 2 miles) on State Highway 47/N. Richmond Street from State Highway 41; West on W. Deerview Drive.



PETERS CONCRETE COMPANY

Main Office / Plant

1516 Atkinson Drive
Green Bay, WI 54303
Phone (920) 494-3700
Fax (920) 494-5475

Marinette Plant

1604 W. Cleveland Ave.
Marinette, WI 54143
Phone 1-800-735-1505
Fax (715) 732-9028

Bonduel Plant

N3601 State Highway 47
Bonduel, WI 54107
Phone (715) 758-2363
Fax (715) 758-6362

www.petersconcrete.com

Ready Mixed Concrete · Excavation · Heavy & Highway · Sewer & Water · Crushing & Aggregates

Appleton Area

2022 Material Prices

Prices Effective March 1, 2022

<u>Code</u>	<u>Material</u>	<u>Deerview Yard</u> <u>22762</u>
846	1 1/4" Recycled Concrete	\$7.00
845	Recycled Asphalt	\$8.00

All Prices Are Per Ton (unless otherwise noted), FOB, and Do Not Include Tax.

All Prices Are Based on Full Load Quantities.

A Minimum charge of \$25.00 applies to all material loaded by Peters Concrete Co.

All Prices Are Subject to Change Without Notice.